



Environmental Assessment Engagement Event # 3

April 27, 2023



Land Acknowledgement



**Set Up and Bold
New Vision**



Housekeeping

- The presentation portion of this engagement event is being recorded. The recording will stop when we break-out into smaller workshop groups.
- For technical support, email info@bespokecollective.ca.
- To turn on Closed Captions select the 'CC' tab.
- ASL interpretation is available in the main room.
- If you are from one of our partner agencies, please identify yourself by adding a # symbol to your zoom name.
- Please maintain a respectful space.

Agenda

1. Setup and Bold New Vision
2. Category C Class Environmental Assessment
3. Recommended Public Realm Design
4. Breakout Session
5. Upcoming Work and Wrap Up

Why are we here today?

- Ontario Place is being redeveloped into a world-class, year-round destination.
- As part of the site's redevelopment and through the Environmental Assessment (EA) process we have an opportunity to modernize and enhance the site's public spaces.
- Today, we want to hear your feedback on the recommended design for Ontario Place's public spaces. **These designs have been "recommended" by the EA process but are not final.**

Our Goals

1. To share information and project updates.
2. To engage with you as part of the Category C Class EA process.
3. To receive your feedback on the recommended design for the public realm spaces.

Bold New Vision

The vision for Ontario Place is anchored by new tenants, the existing and successful Trillium Park, the new Ontario Science Centre and a redeveloped public realm. The private and public sector are working together to deliver the new vision.

The government's vision for Ontario Place will:

- Provide a remarkable, world-class, year-round destination.
- Expand and improve waterfront access, parkland and public spaces.
- Respect Ontario's historical and natural features.
- Honour the rich traditions, cultures, and heritage of Indigenous peoples.
- Showcase Ontario's diversity and multiculturalism.
- Preserve and reuse its unique architectural and landscape features.
- Advance sustainability and climate resilience.



Therme Canada



Live Nation



Ontario Science Centre



Public Realm

Redevelopment Objectives



Green Space

Enhanced Public Open Spaces



Access

Preserve a Publicly Accessible Waterfront



Water

Increased Water Access



Pods and Cinesphere Restoration

Preserving Cultural Heritage



Wetlands

New Aquatic Habitat and Wetlands



Trees

Increased Canopy Cover



Bike Paths

New and Improved Multi-use Trails

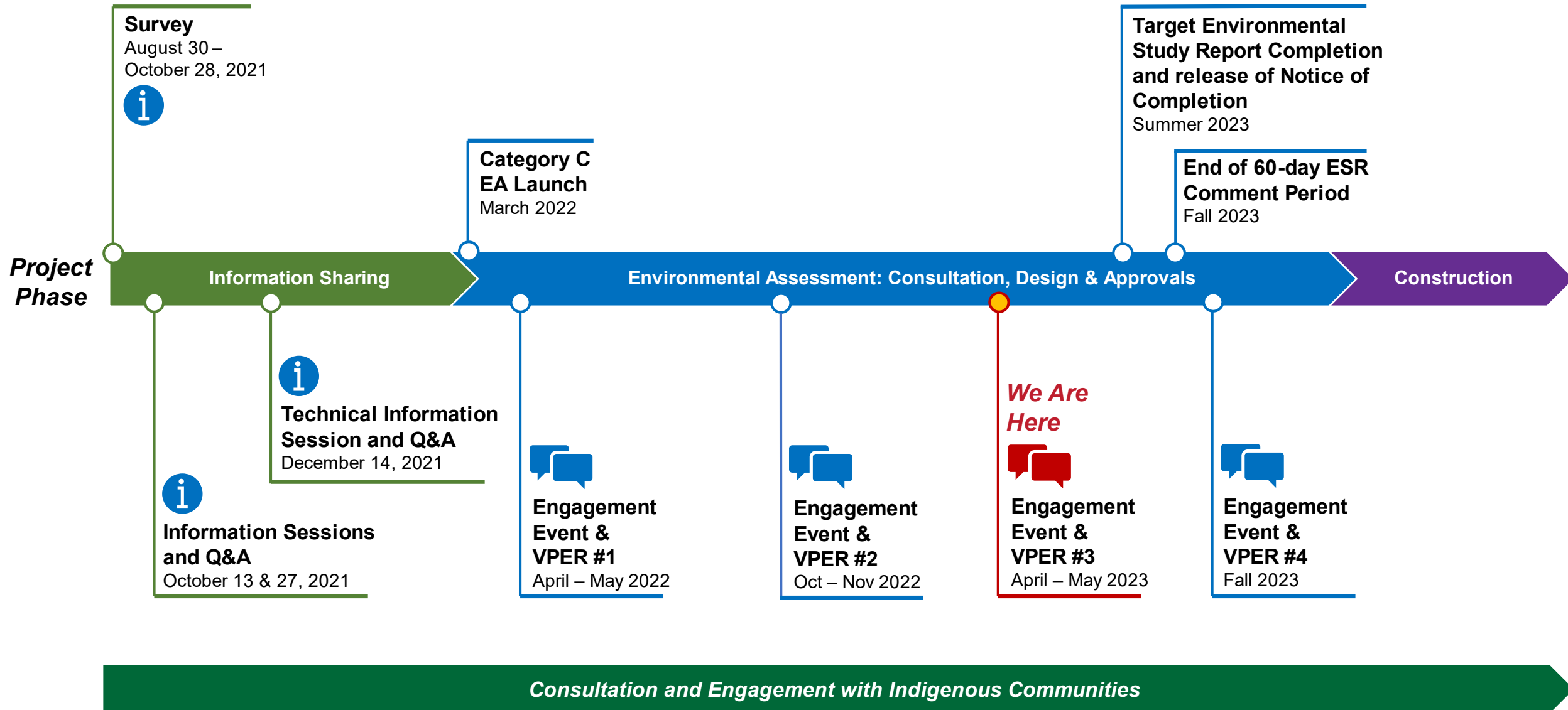


Recreation

Animating the Public Realm



Timeline



Note: Timelines are indicative and subject to change.



Category C Class Environmental Assessment

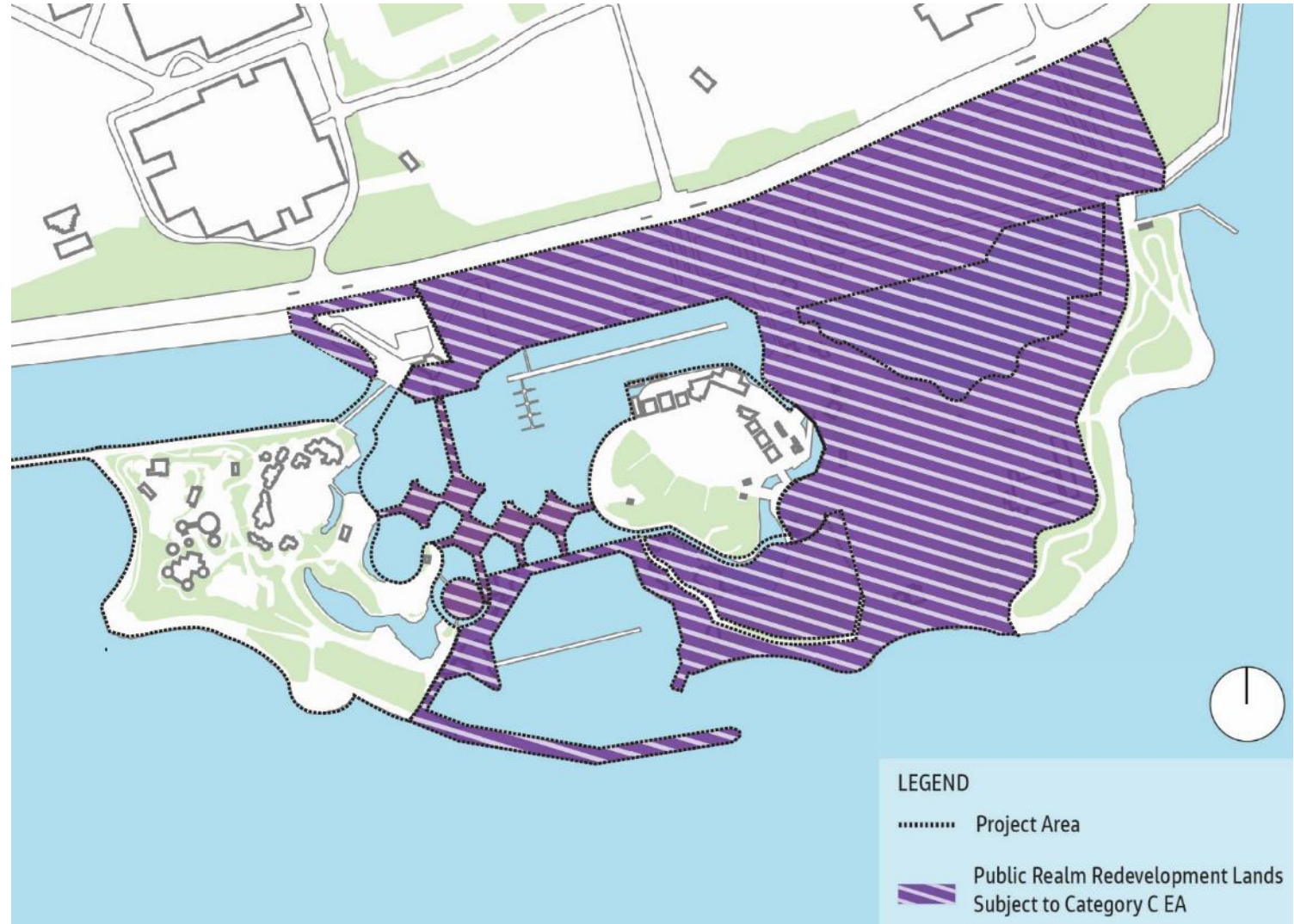
EA Act Applicability

- For the project, the Category C Class EA is only applicable to the government-led activities.
- The *Environmental Assessment Act* governs public sector developments and provides requirements for the environmental assessment process.
- The *Planning Act* governs land use planning and provides requirements for these activities across the province.
- Private sector developments are not subject to the *Environmental Assessment Act*, but they are required to follow the *Planning Act* and the municipal planning process.
 - They are also required to secure zoning and site plan approval, as well as meet all the federal, provincial and municipal environmental permits and approvals.

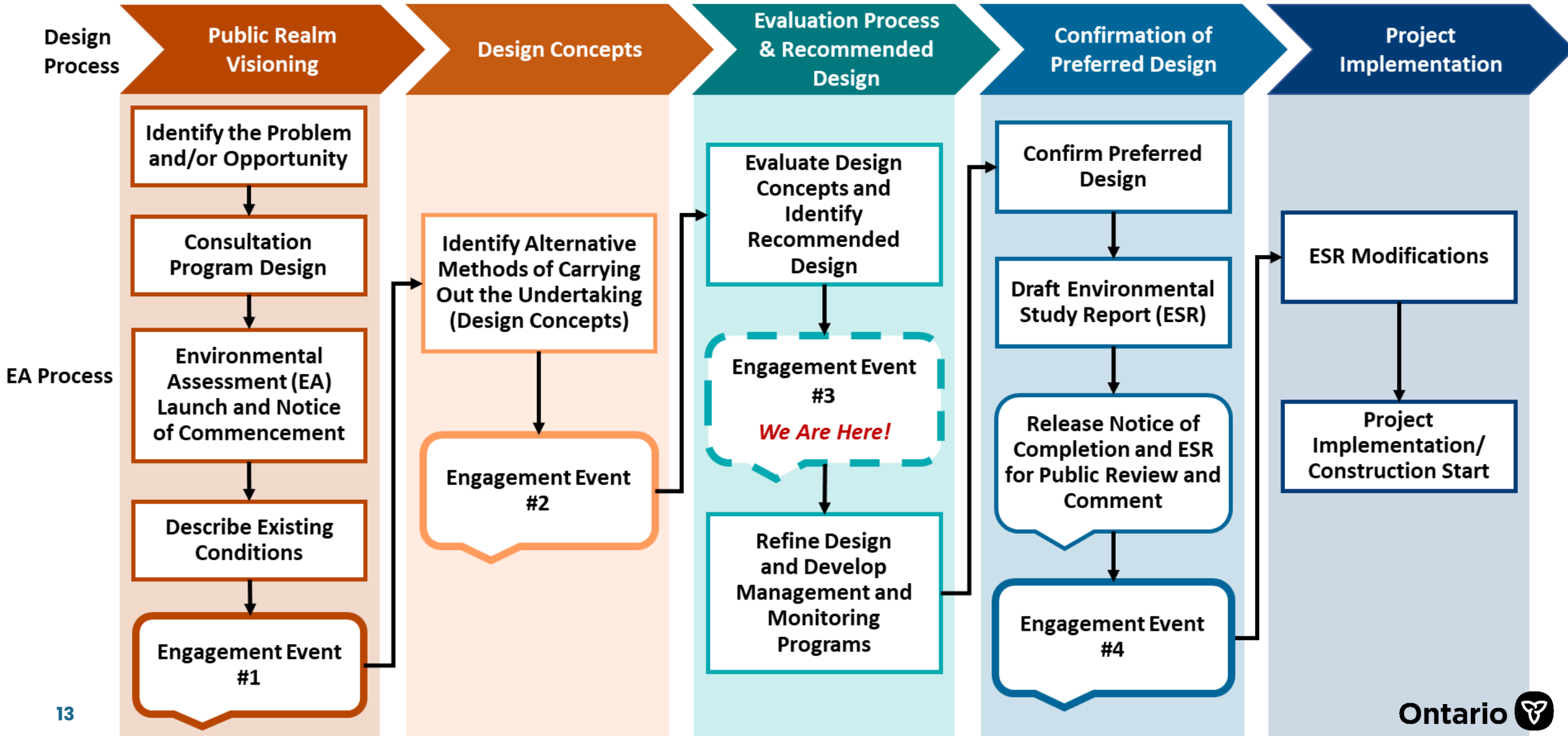


About the Environmental Assessment (EA)

- The Category C Class EA Study Area is defined as the public realm area where government-led activities will occur and is subject to the *Environmental Assessment Act*.
- The key OP redevelopment activities encompassed by the EA include:
 - › Planning approvals and realty activities
 - › Building decommissioning and removal
 - › Grading and landscaping
 - › Development of parks, trails and open spaces
 - › Shoreline repairs and flood mitigation
 - › Site access and parking
 - › Construction of new buildings and supporting site infrastructure.

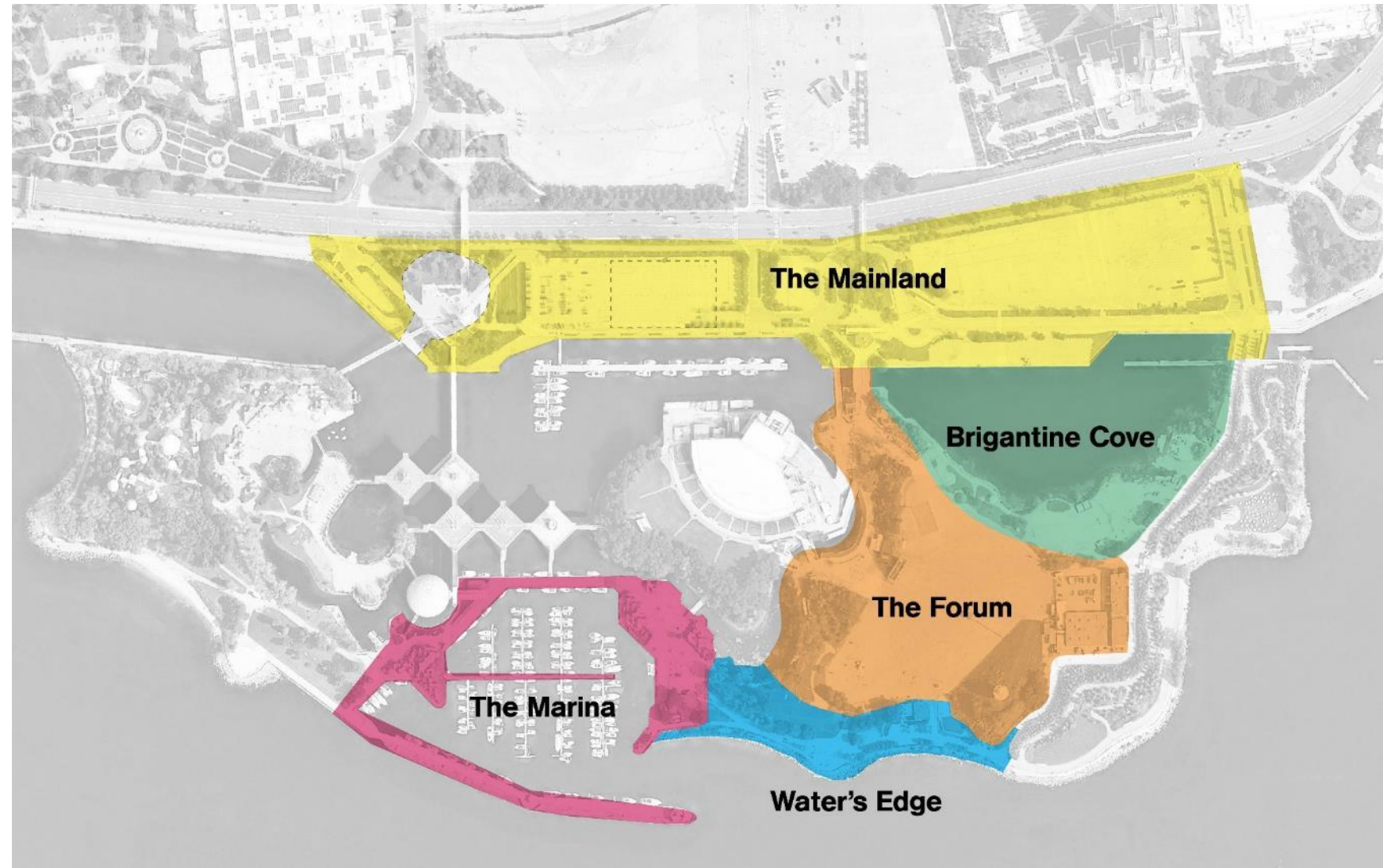


Design Development & EA Process



The Zones

To help navigate the site and facilitate thorough evaluation through the EA process, the Ontario Place public realm was divided into 5 zones.



Overview of the EA Evaluation

- Building on public feedback received in Fall 2022 – the EA team finalized the EA evaluation criteria table that was then used to identify a recommended design for the public realm.
 - › The evaluation table is divided into the following six categories:



Natural Environment

- Air
- Land
- Water



Social Environment

- Interactions of users with surrounding communities
- Land use compatibility



Cultural Environment

- Archaeology
- Heritage
- Indigenous cultures



Technical Environment

- Engineering
- Construction constraints
- Soil and groundwater conditions



Economic Environment

- Capital costs
- Operational and maintenance costs
- Job creation



Sustainability

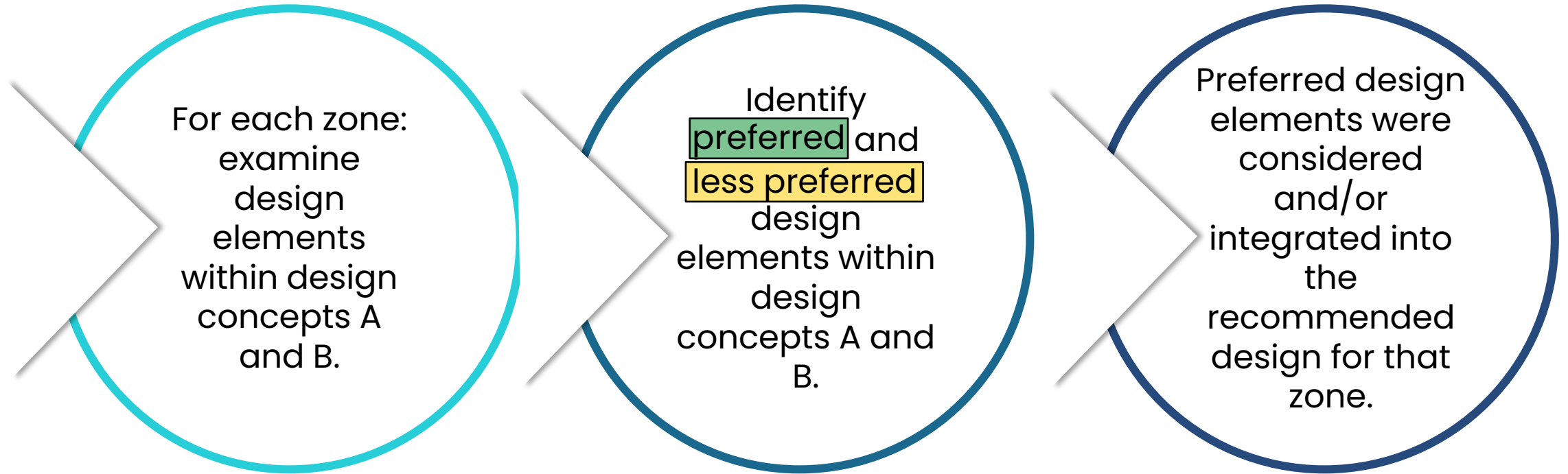
- Climate resilience
- Long-term viability

Overview of the EA Evaluation (Continued)

- Each of the six categories consist of site-specific objectives and supporting evaluation criteria.
- Using a qualitative, rationale-based assessment, indicators identified for each criterion were used to measure how each design element met the site-specific objectives:
 - › Design elements that were determined to best meet the objectives, vision and feedback were identified as preferred.



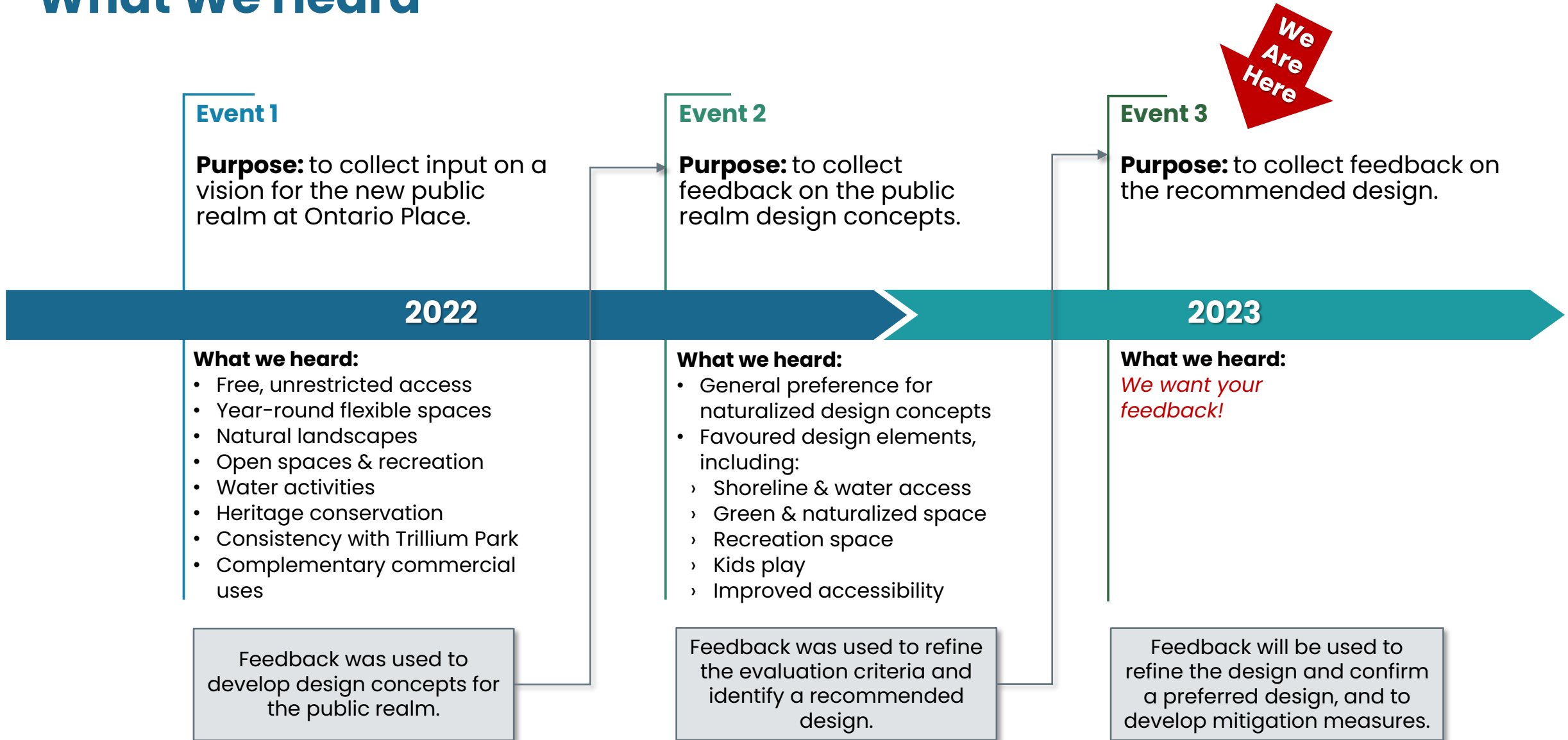
Evaluation Process for Each Zone





Recommended Public Realm Design

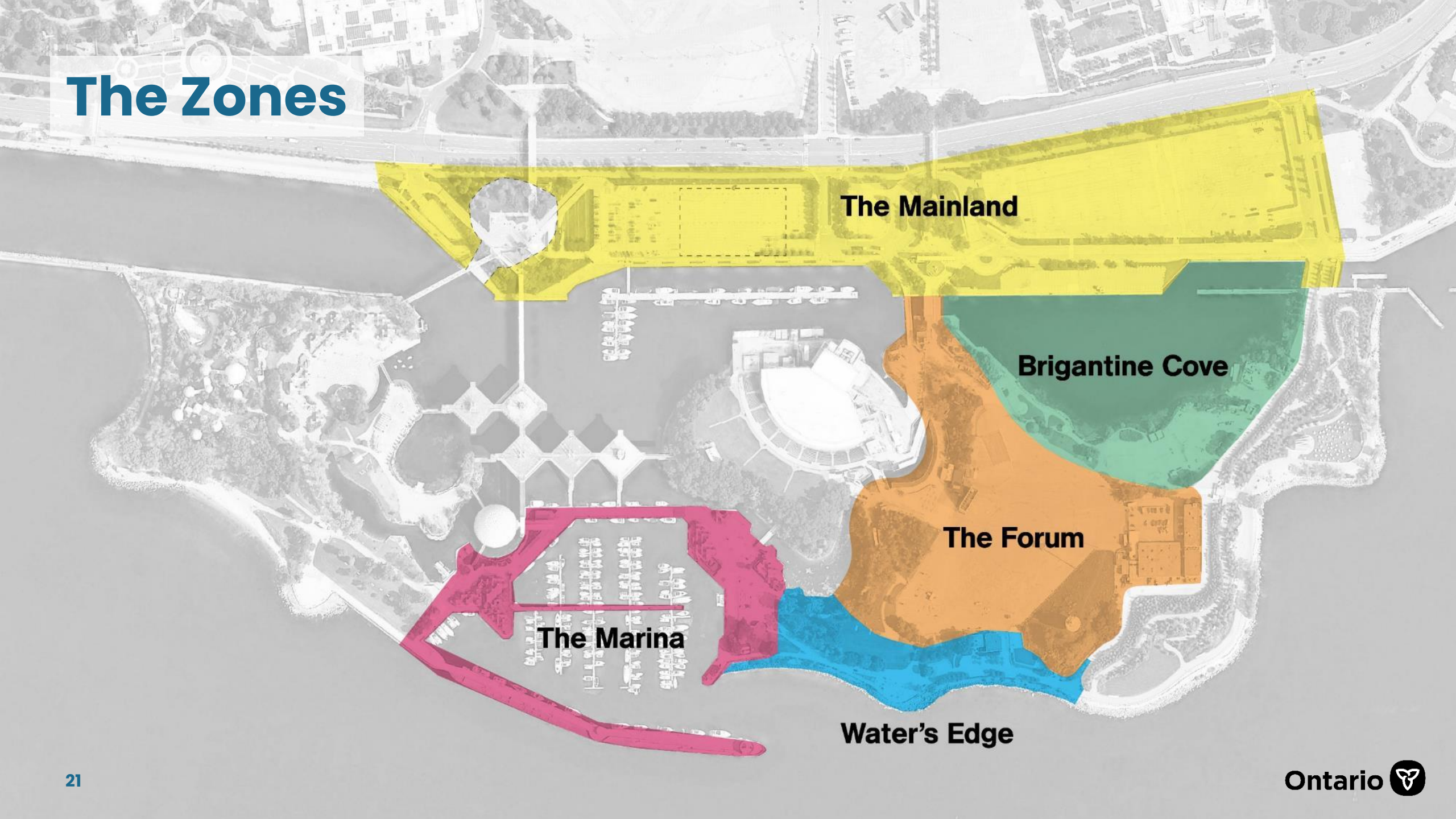
What We Heard



What We Heard from Indigenous Communities

- Consultation and engagement with rights-holding Indigenous communities and urban Indigenous organizations in Toronto has been ongoing and will continue throughout the EA and design process.
- Suggestions for the public realm design shared by Indigenous community members include:
 - › Using native trees and species
 - › Working with, not against nature
 - › Using plants (i.e., water lilies) to filter out toxins in water
 - › Replacing impervious with pervious material where possible
 - › Sharing and teaching of Traditional Knowledge
 - › Leaving space for the natural world and for wildlife to exist without human interference
 - › Including linguistic diversity
 - › Including wampum belt teaching and symbolism
 - › Storytelling

The Zones



The Mainland

Brigantine Cove

The Forum

The Marina

Water's Edge



Zone 1: Water's Edge

Water's Edge

Zone 1: Water's Edge

The Concepts



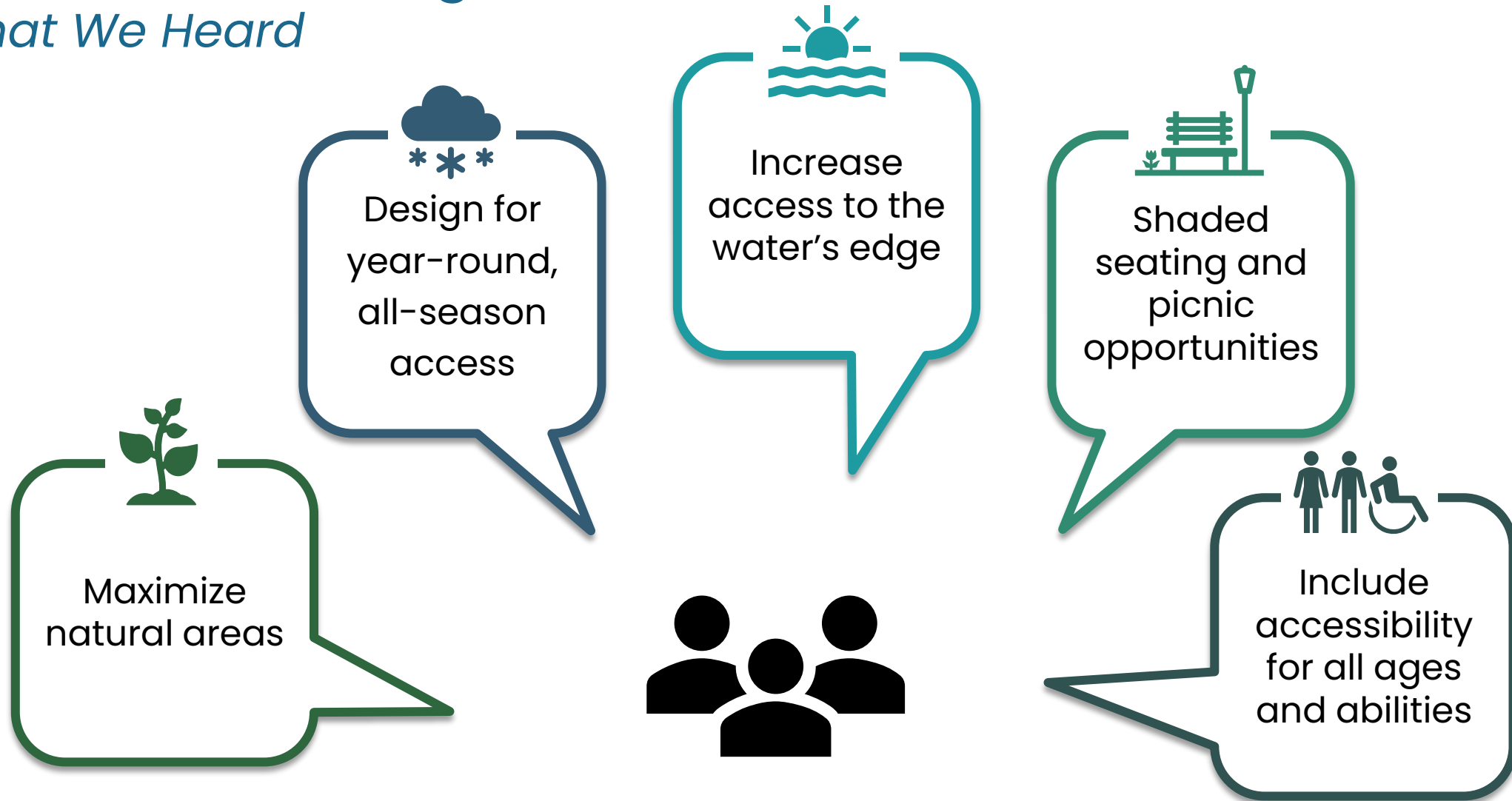
Concept A:
Stone Lookouts



Concept B:
Planted Piers

Zone 1: Water's Edge

What We Heard



Zone 1: Water's Edge

The Evaluation



Category	Concept A: Stone Lookouts	Concept B: Planted Piers
Natural Environment	Preferred	Less Preferred
Social Environment	Preferred	Less Preferred
Cultural Environment	Preferred	Preferred
Technical Environment	Less Preferred	Preferred
Economic Environment	Preferred	Preferred
Sustainability	Preferred	Preferred
Overall Preference	Preferred	Less Preferred

Zone 1: Water's Edge

Recommended Design



Category	Concept A: Stone Lookouts	Concept B: Planted Piers
Overall Preference	Preferred	Less Preferred

Concept A provides greater opportunity for long-term shoreline protection, integrates Hough principles, and allows for additional seating along the shoreline. This concept is being modified to make the lower waterfront accessible to all users and will increase vegetation to the extent possible.

Zone 1: Water's Edge

Recommended Design



Seat Wall

Waterfront Promenade

Trail Connection to Forum

Lookout Point

Washroom

Stone Seating & Steps

Rebuilt Shoreline

Shade Canopy And Biodiversity

Lake Ontario Lookout

Zone 1: Water's Edge

Design Vision



Lake Ontario Lookout

Weather & Wind Mitigation

Waterfront Promenade

Zone 1: Water's Edge

Design Vision



Shade Canopy
And Biodiversity

Stone Seating
& Steps

Rebuilt Shoreline



Zone 1: Water's Edge

Design Vision



Natural Stone Seating

Waterfront Promenade

Accessible Patio

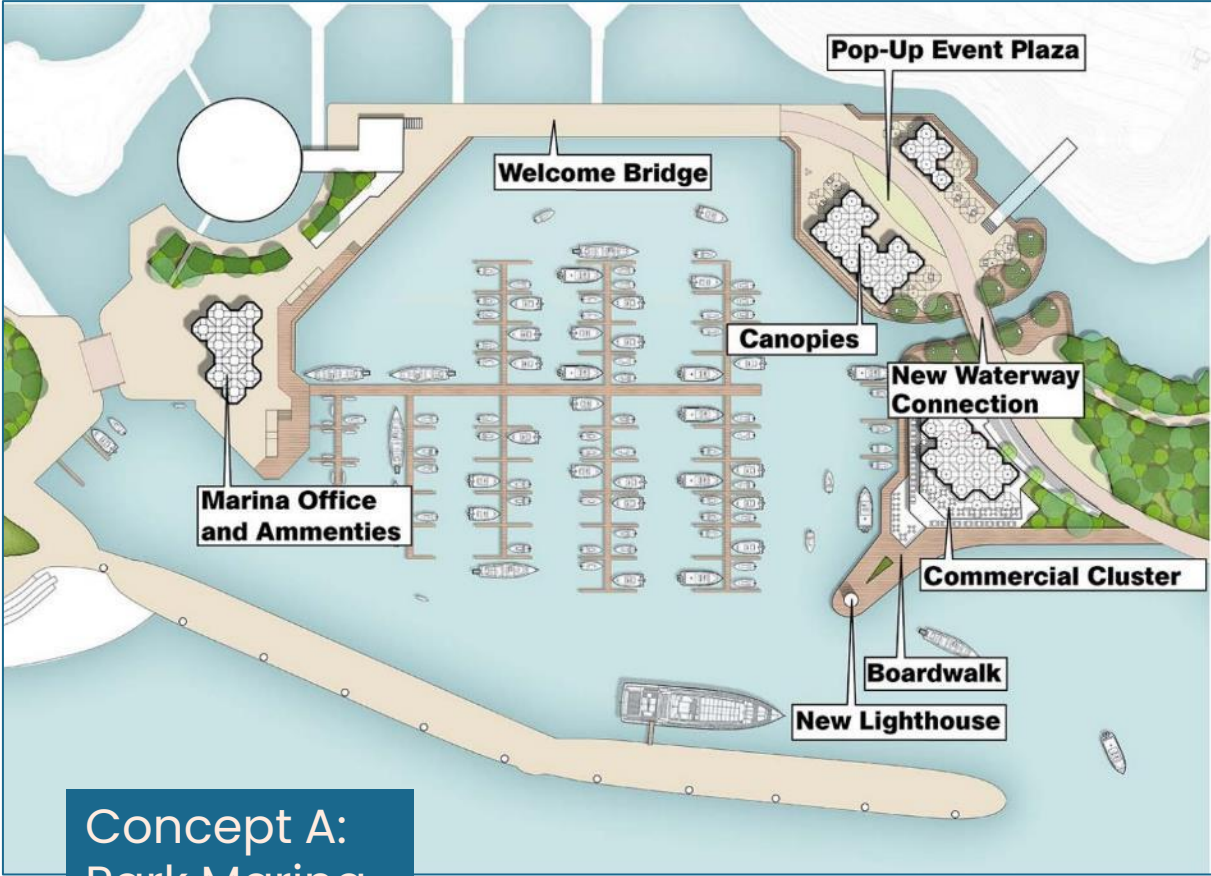


Zone 2: Marina

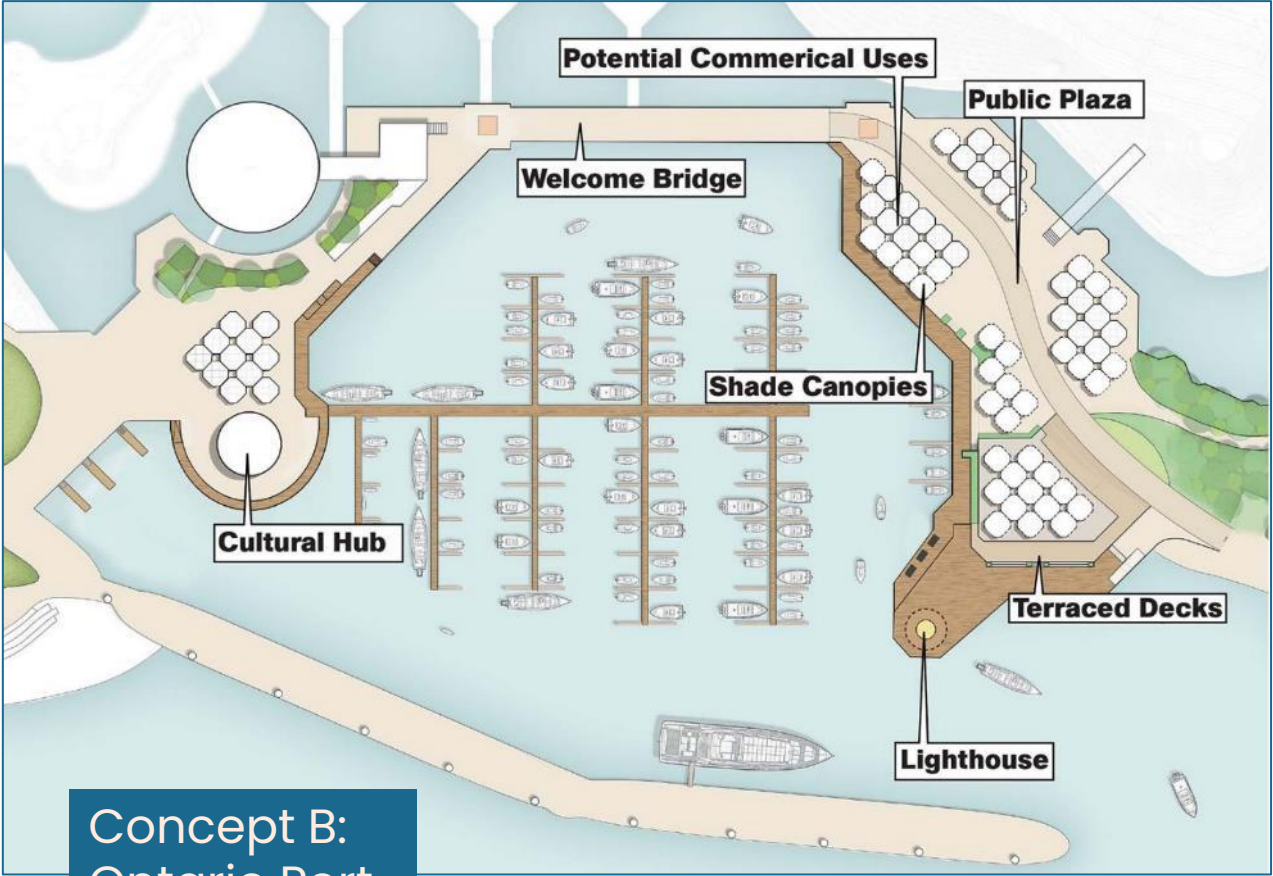
The Marina

Zone 2: Marina

The Concepts



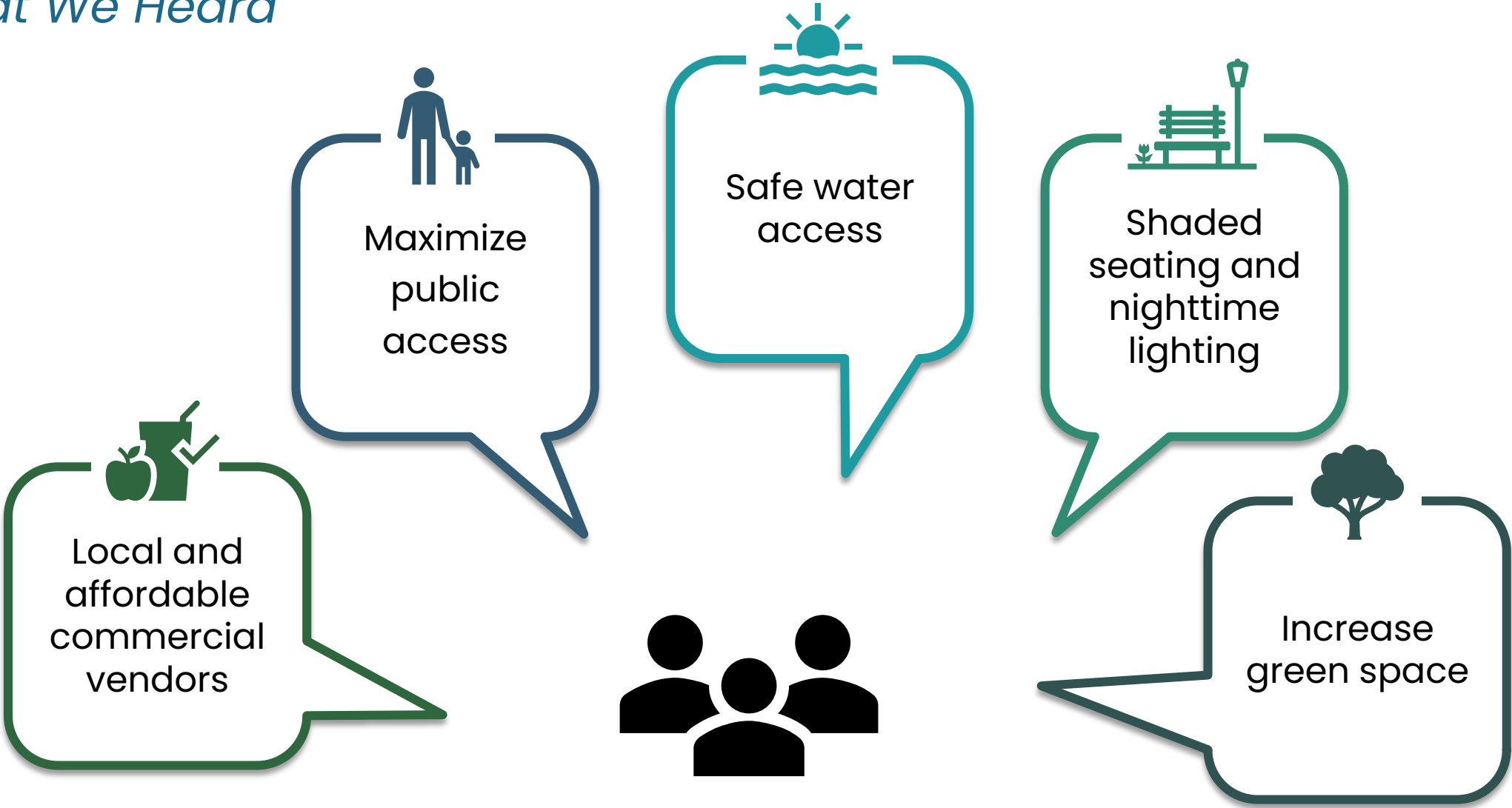
Concept A:
Park Marina



Concept B:
Ontario Port

Zone 2: The Marina

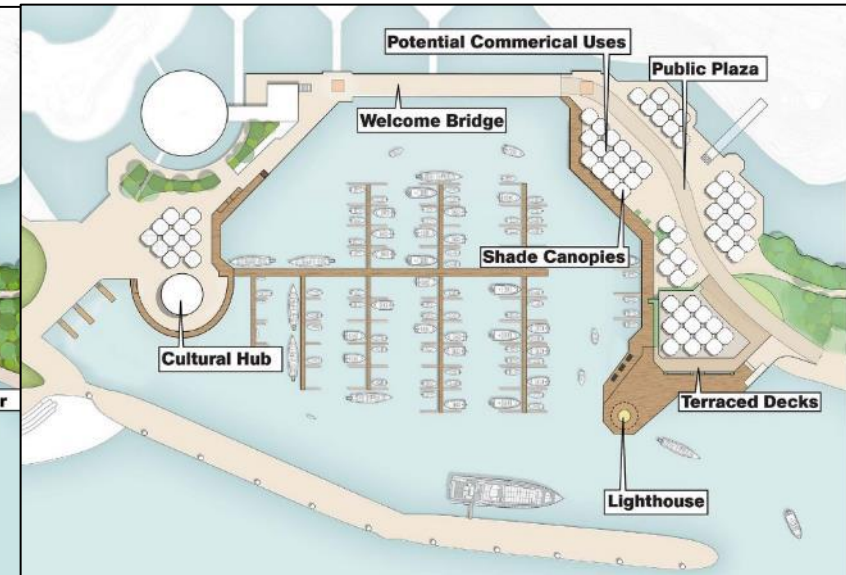
What We Heard



Zone 2: Marina

The Evaluation

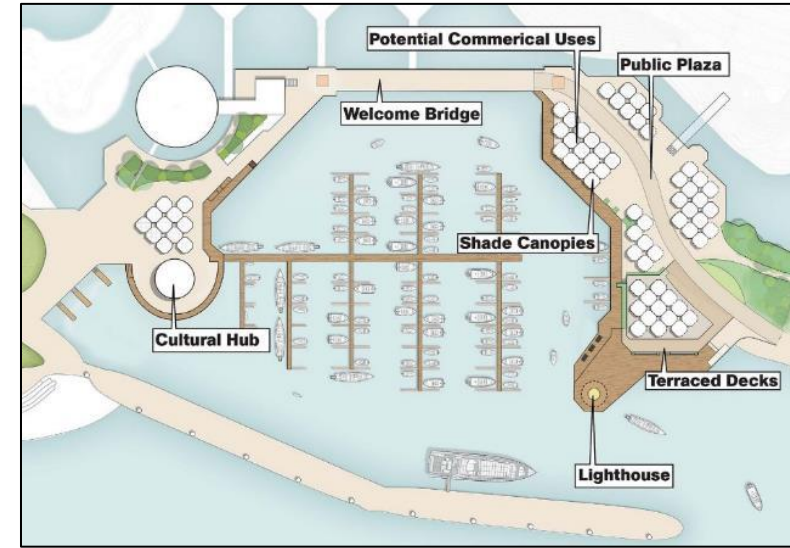
Note: The "New Waterway Connection" shown in Concept A was determined to not be technically or financially feasible; therefore, this design feature is no longer included. This will provide more opportunity for additional trees in this zone.



Category	Concept A: Park Marina	Concept B: Ontario Port
Natural Environment	Preferred	Less Preferred
Social Environment	Preferred	Less Preferred
Cultural Environment	Less Preferred	Preferred
Technical Environment	Preferred	Preferred
Economic Environment	Preferred	Preferred
Sustainability	Preferred	Less Preferred
Overall Preference	Preferred	Less Preferred

Zone 2: Marina

Recommended Design



Category	Concept A: Park Marina	Concept B: Ontario Port
Overall Preference	Preferred	Less Preferred

Concept A provides more opportunity for increasing vegetation and greenspace. Public feedback has indicated a preference for the features associated with Concept A. Ideas from both concepts will be integrated, including maximizing greenspace, educational opportunities, areas for future commercial use, shaded seating, and the Cultural Pavilion.

Zone 2: Marina

Recommended Design



Vista Cafe

Marina Boardwalk

Open Air Pavilions

Marina Plaza

Washrooms

Pavilions

Retail Kiosks

Cultural Pavilion

Modernized
Marina Slips

Terraced Deck

Lighthouse Point

Ontario Place Pier

Zone 2: Marina

Design Vision



Shade Canopy

Zeidler Inspired Design

Open Air Pavilions

Pop Up Markets



Zone 2: Marina

Design Vision



Iconic Pavilion Lighting

Marina Plaza

Patio Dining

Tree Canopy



Zone 2: Marina

Design Vision



Wind Turbines

Canopy

Boardwalk

Zone 2: Marina

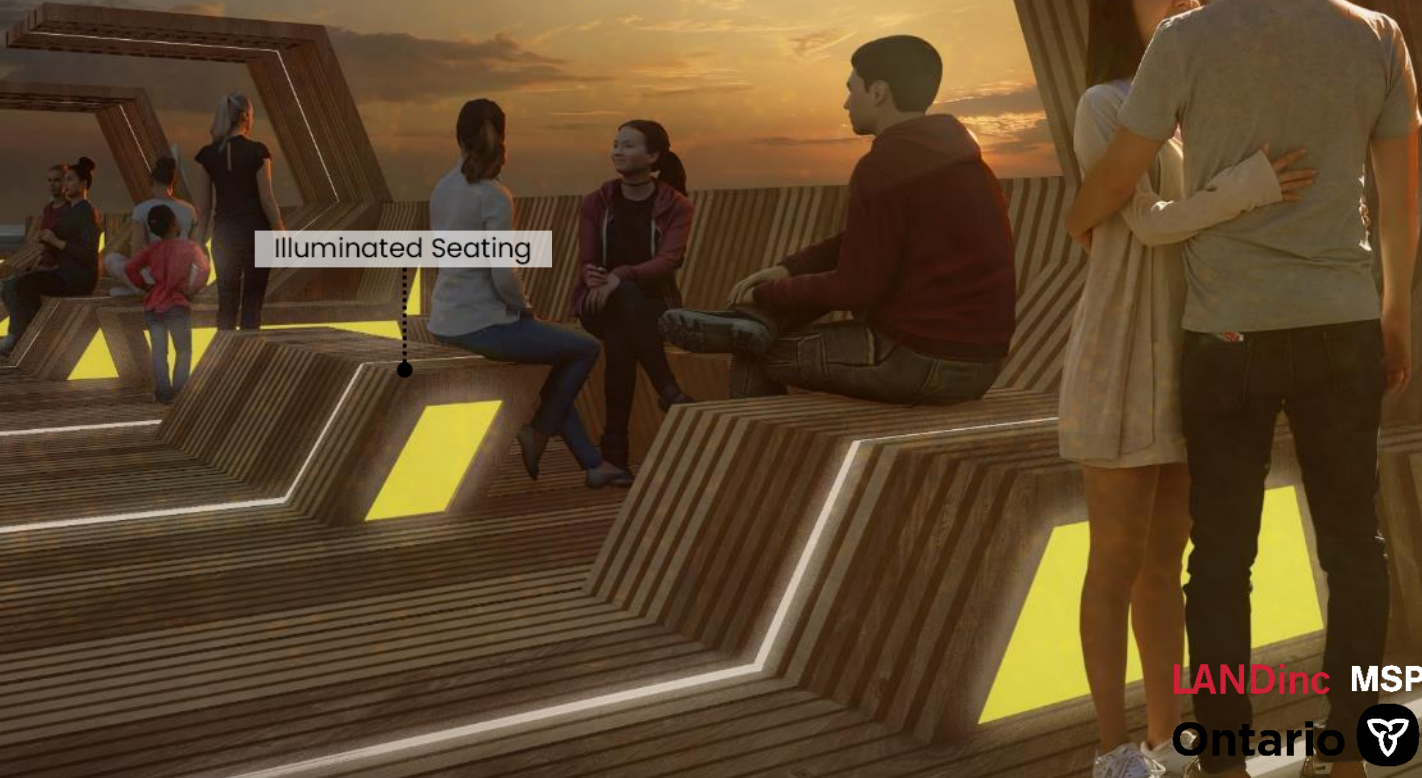
Design Vision



Iconic Lighting Feature



Illuminated Seating



Integrated Strip Lighting





Brigantine Cove

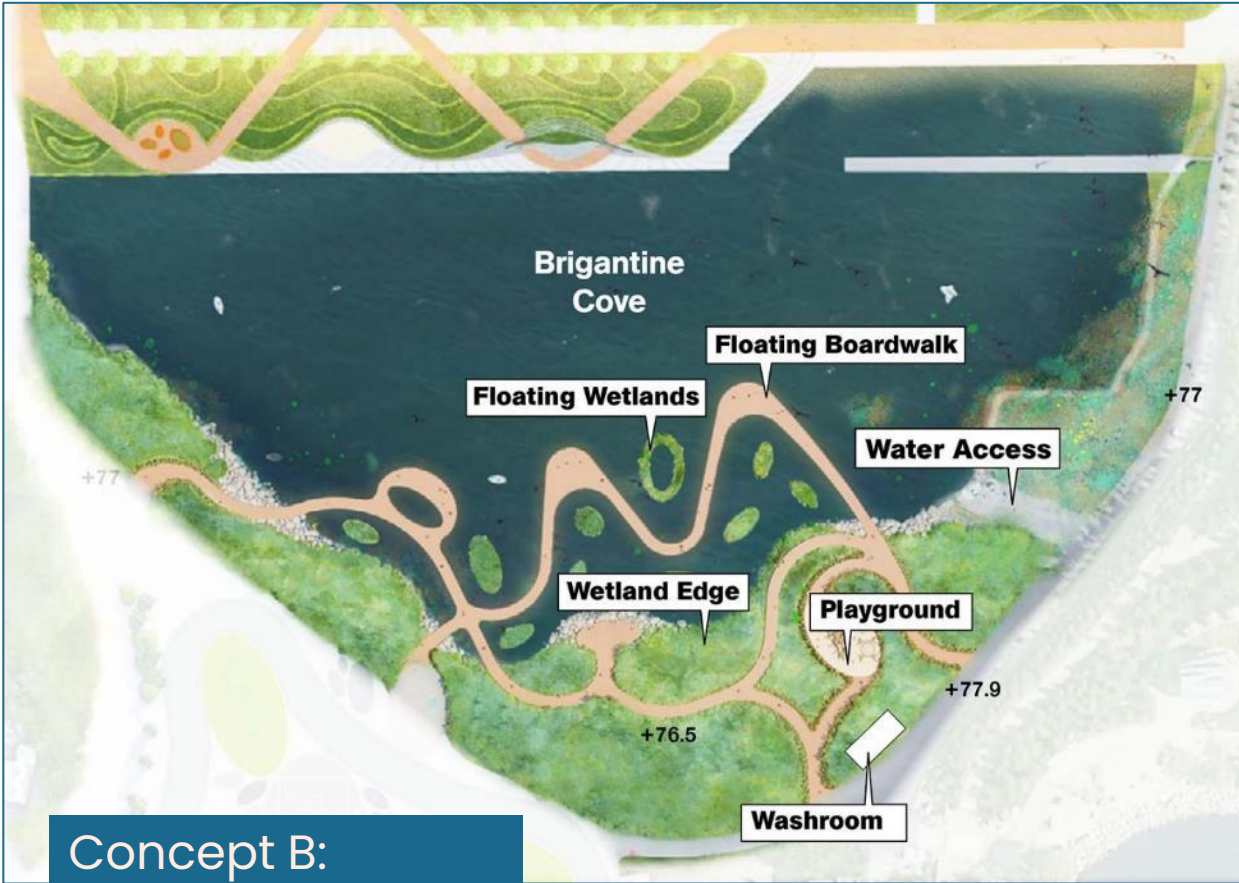
**Zone 3:
Brigantine Cove**

Zone 3: Brigantine Cove

The Concepts



Concept A: Event & Activities



Concept B: Wetland & Nature

Zone 3: Brigantine Cove

What We Heard



Provide an 'escape' from the city



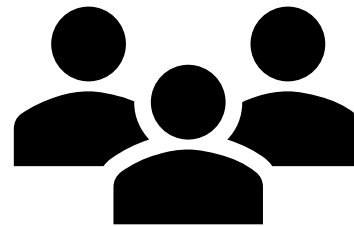
Improve water quality and circulation



Provide access to the water



Create green areas with native trees and plants



Build an innovative children's play area

Zone 3: Brigantine Cove

The Evaluation



Category	Concept A: Event & Activities	Concept B: Wetland & Nature
Natural Environment	Less Preferred	Preferred
Social Environment	Less Preferred	Preferred
Cultural Environment	Less Preferred	Preferred
Technical Environment	Less Preferred	Preferred
Economic Environment	Preferred	Less Preferred
Sustainability	Less Preferred	Preferred
Overall Preference	Less Preferred	Preferred

Zone 3: Brigantine Cove

Recommended Design



Category	Concept A: Event & Activities	Concept B: Wetland & Nature
Overall Preference	Less Preferred	Preferred

Concept B provides opportunity for park users to interact with the environment via boardwalk and wetlands, more vegetation, greenspace and a Children's Play Zone, while providing effective and sustainable stormwater management protecting against flood risks.

Zone 3: Brigantine Cove

Recommended Design



Pavilion

Fountains

Boat Launch

East Bridge

Floating Wetlands

Boardwalk

Beach

Cardinal Landing

Beaver Dam Lookout

Great Turtle Play Mounds

Tree of Life Play Structure

Washrooms

Zone 3: Brigantine Cove

Design Vision



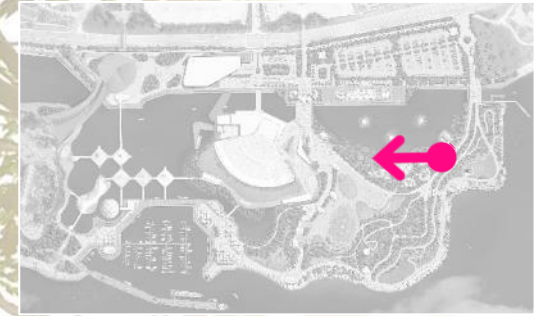
Improved Water Quality

Floating Wetlands

Boardwalk

Zone 3: Brigantine Cove

Design Vision



Canopy Buffer

Play Hills

Native Planting

Zone 3: Brigantine Cove

Design Vision



Seating Edge

Boardwalk

Native Planting

Beach

East Gateway Bridge

Long-term Vision

Canoe & Kayak Access

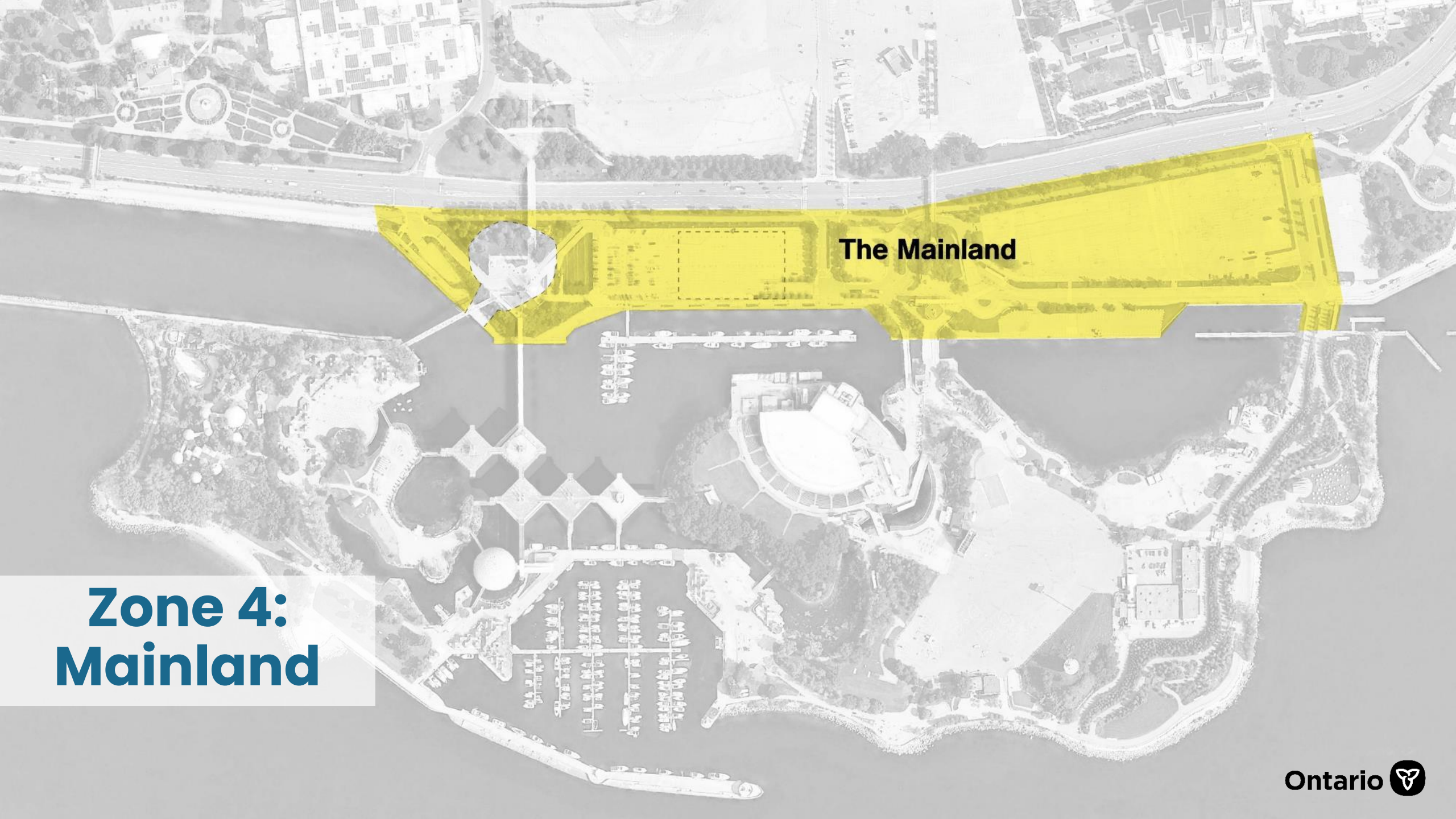
Improved Water Circulation



Ontario Place Branding

Expanded Pedestrian Access





The Mainland

**Zone 4:
Mainland**

Zone 4: Mainland

The Concepts



Concept A:
Urban and Active



Concept B:
Green Gateway

Zone 4: Mainland

What We Heard



Accessibility
for all ages
and abilities



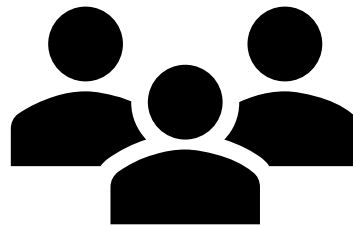
Improve
walking and
bicycling
connections



Provide
recreational
opportunities



"Green" the
currently
paved areas



Improve
transit
connections

Zone 4: Mainland

The Evaluation



Category	Concept A: Urban and Active	Concept B: Green Gateway
Natural Environment	Less Preferred	Preferred
Social Environment	Preferred	Preferred
Cultural Environment	Less Preferred	Preferred
Technical Environment	Preferred	Less Preferred
Economic Environment	Preferred	Less Preferred
Sustainability	Preferred	Preferred
Overall Preference	Preferred	Less Preferred

Zone 4: Mainland

Recommended Design

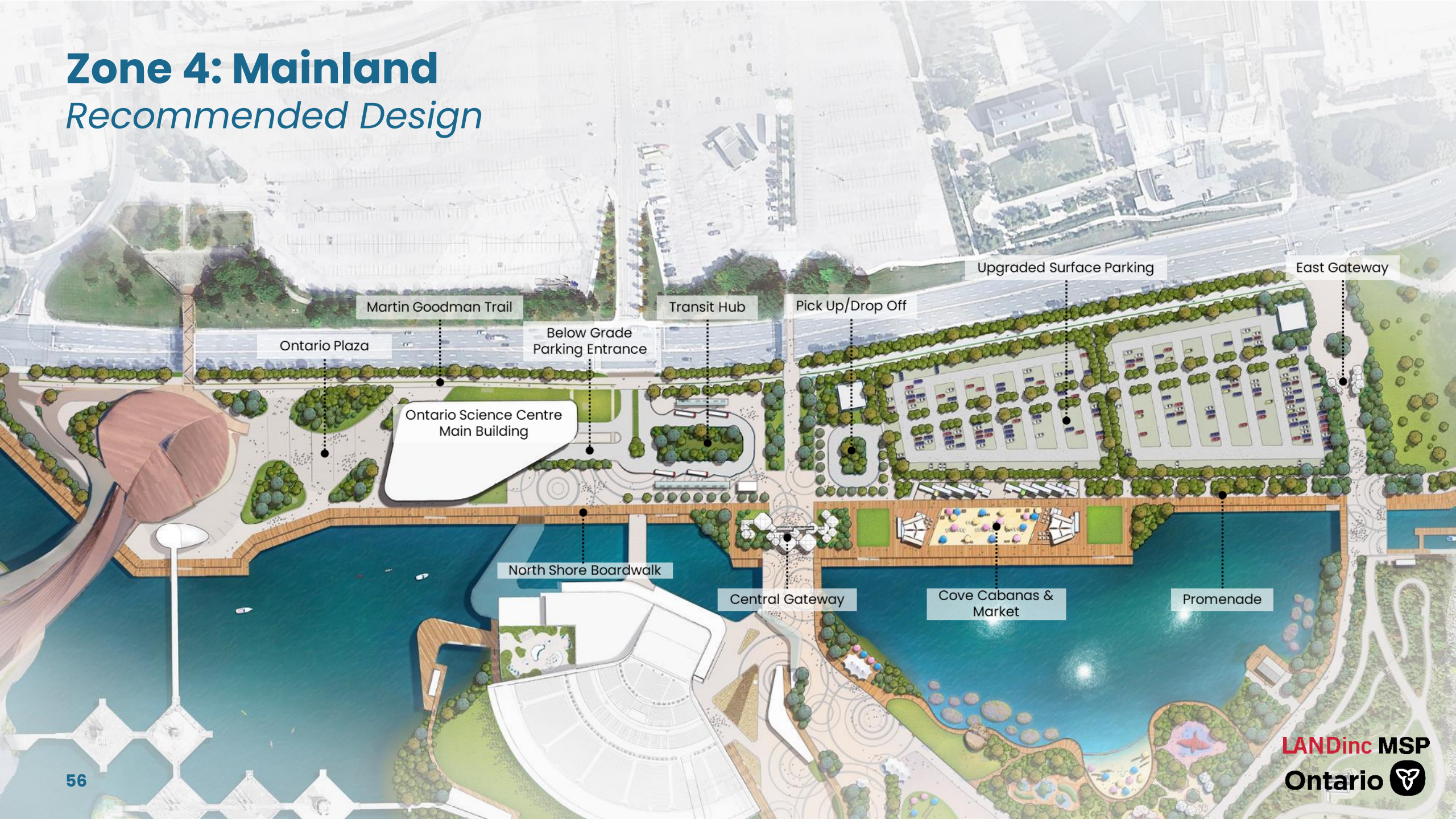


Category	Concept A: Urban and Active	Concept B: Green Gateway
Overall Preference	Preferred	Less Preferred

Concept A has lower construction and maintenance costs and is easier to implement. Features from Concept B will be integrated, such as increasing greenspace and vegetation.

Zone 4: Mainland

Recommended Design



Martin Goodman Trail

Transit Hub

Pick Up/Drop Off

Upgraded Surface Parking

East Gateway

Ontario Plaza

Below Grade
Parking Entrance

Ontario Science Centre
Main Building

North Shore Boardwalk

Central Gateway

Cove Cabanas &
Market

Promenade

Zone 4: Mainland

Design Vision



Floating Boardwalk

Activity Zone

Shade Cover

Planting Buffer

Boardwalk

Multi-Modal Path

Zone 4: Mainland

Design Vision



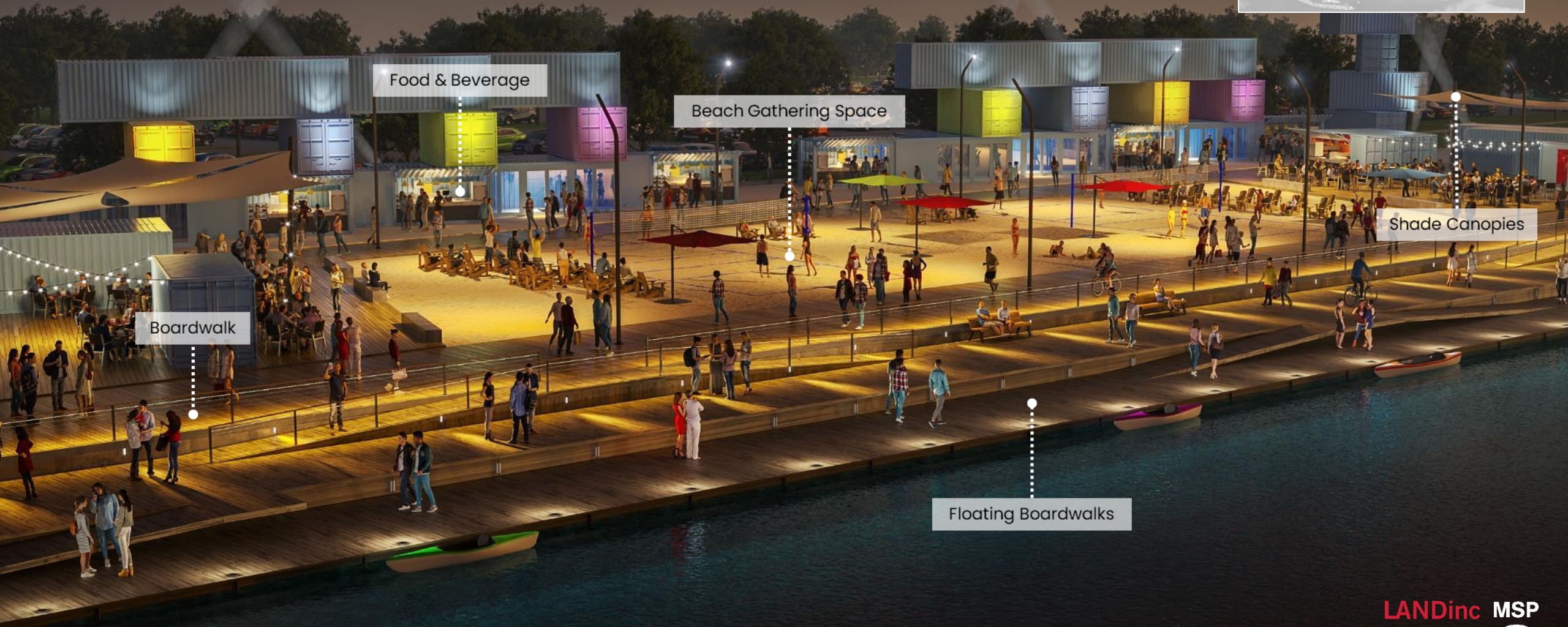
Light Poles

Tree Uplighting

Illuminated Seating

Zone 4: Mainland

Design Vision



Food & Beverage

Beach Gathering Space

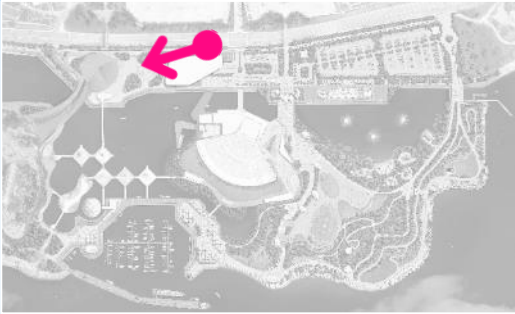
Boardwalk

Shade Canopies

Floating Boardwalks

Zone 4: Mainland

Design Vision



North Shore Boardwalk

Flexible Plaza Space

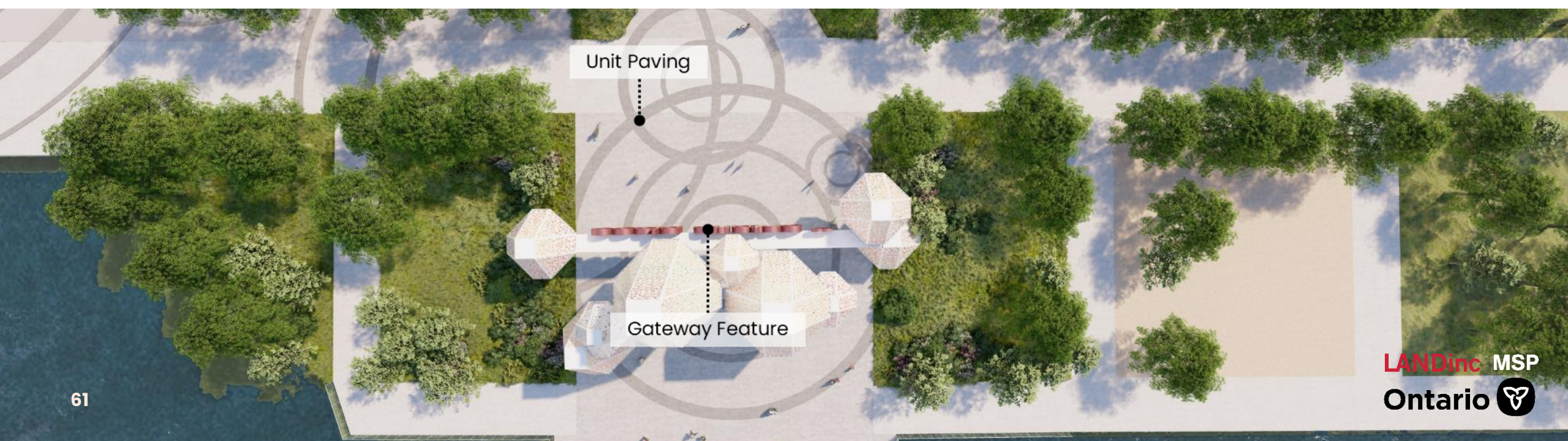
Planting Terraces

Therme Pavilion

MGT Trail

Central Gateway

Design Vision



East Gateway Design Vision



Parking

Existing



Parking

The Evaluation

- Step One: Screening of onsite versus offsite alternatives with **onsite as the preferred solution.**
- Step Two: Comparison of parking structures (onsite at the existing surface parking locations, P1 and P2).

Category	Above ground Structure	Belowground Structure	Surface Parking Lots	Combination of Surface Parking Lot and Belowground Structure
Natural Environment	Least Preferred	Preferred	Less Preferred	Preferred
Social Environment	Preferred	Less Preferred	Least Preferred	Less Preferred
Cultural Environment	Least Preferred	Preferred	Preferred	Preferred
Technical Environment	Least Preferred	Less Preferred	Least Preferred	Preferred
Economic Environment	Least Preferred	Less Preferred	Preferred	Less Preferred
Overall Preference	Least Preferred	Less Preferred	Least Preferred	Preferred

Parking

Recommended Alternative

Category	Above ground Structure	Belowground Structure	Surface Parking Lots	Combination of Surface Parking Lot and Belowground Structure
Overall Preference	Least Preferred	Less Preferred	Least Preferred	Preferred

Combination of surface parking lot and belowground structure provides greatest onsite parking and flexibility in parking options for visitors. Maintains heritage views and views of Lake Ontario, opportunity for future development of west side of Mainland (including revegetation) and lower operating and maintenance costs.

Parking

Recommended Alternative



Belowground parking structure

Upgraded Surface Parking

Ontario Science Centre

Location Alternatives



Ontario Science Centre

Evaluation of Location Alternatives



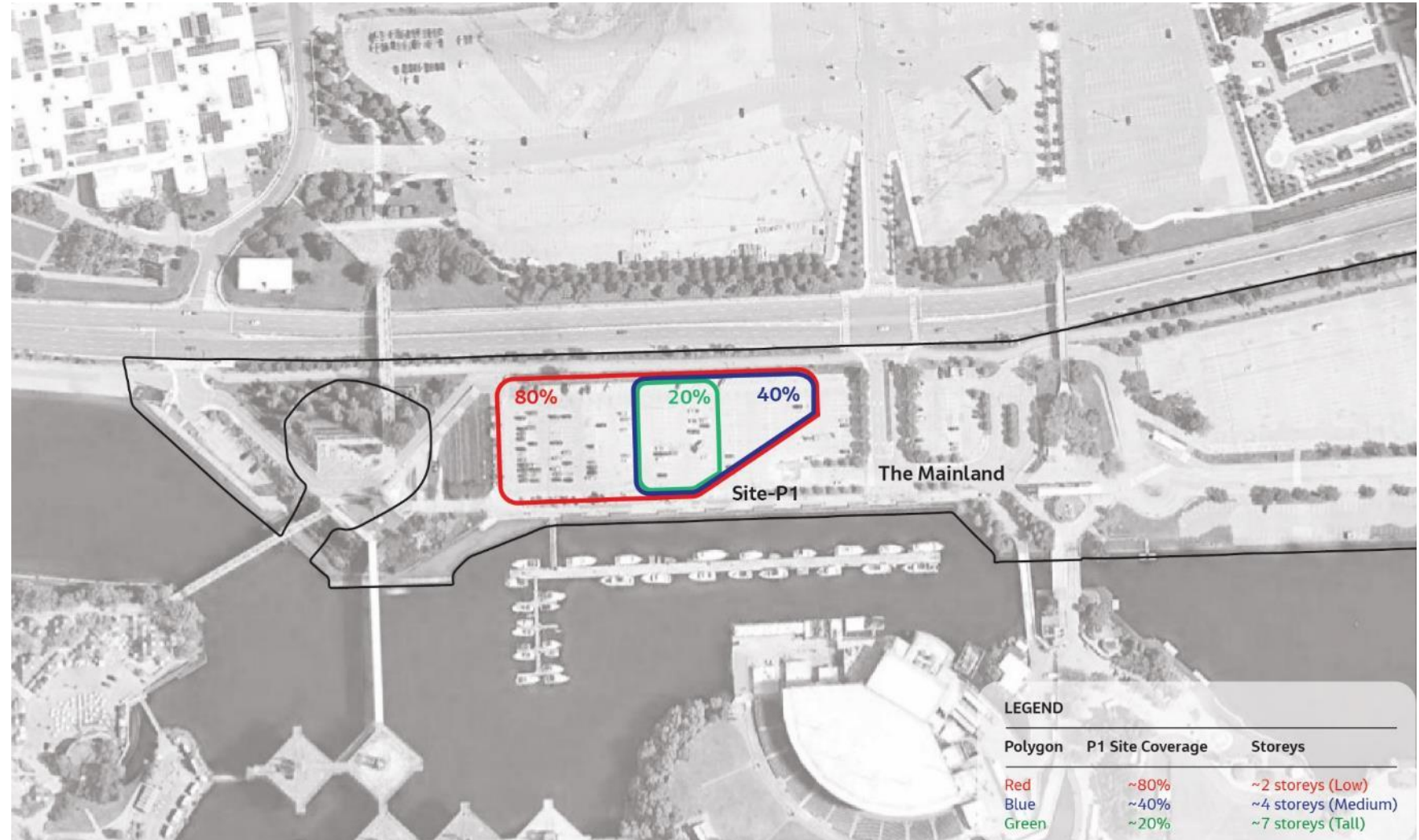
Category	Mainland (P1)	Mainland (P2)
Natural Environment	Preferred	Preferred
Social Environment	Preferred	Less Preferred
Cultural Environment	Preferred	Preferred
Technical Environment	Less Preferred	Less Preferred
Economic Environment	Less Preferred	Less Preferred
Overall Preference	Preferred	Less Preferred

Ontario Science Centre

Height and Massing Alternatives

Alternatives:

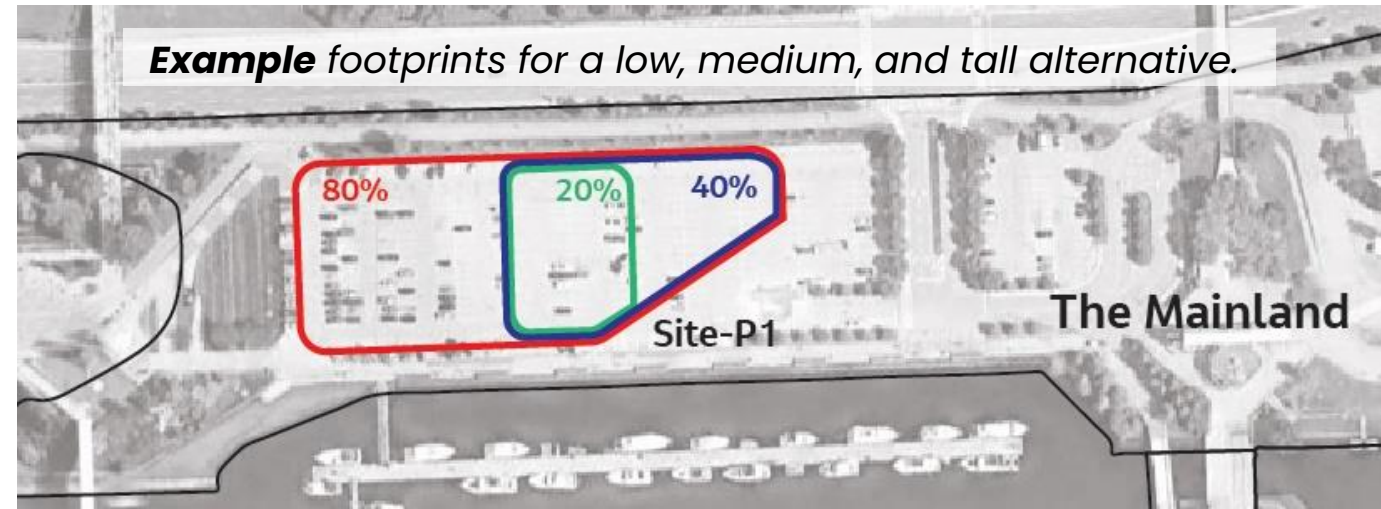
- **Low** (up to 2 storeys; P1 site coverage up to 80%)
- **Medium** (3 to 6 storeys; P1 site coverage up to 55%)
- **Tall** (7 plus storeys; P1 site coverage up to 25%)



Example footprints for a low, medium, and tall alternative.

Ontario Science Centre

Height and Massing Evaluation



Category	Low (up to 2 storeys; P1 site coverage up to 80%)	Medium (3 to 6 storeys; P1 site coverage up to 55%)	Tall (7 plus storeys; P1 site coverage up to 25%)
Natural Environment	Preferred	Preferred	Preferred
Social Environment	Least Preferred	Preferred	Preferred
Cultural Environment	Least Preferred	Preferred	Preferred
Technical Environment	Less Preferred	Preferred	Least Preferred
Economic Environment	Less Preferred	Preferred	Preferred
Overall Preference	Least Preferred	Preferred	Less Preferred

Ontario Science Centre

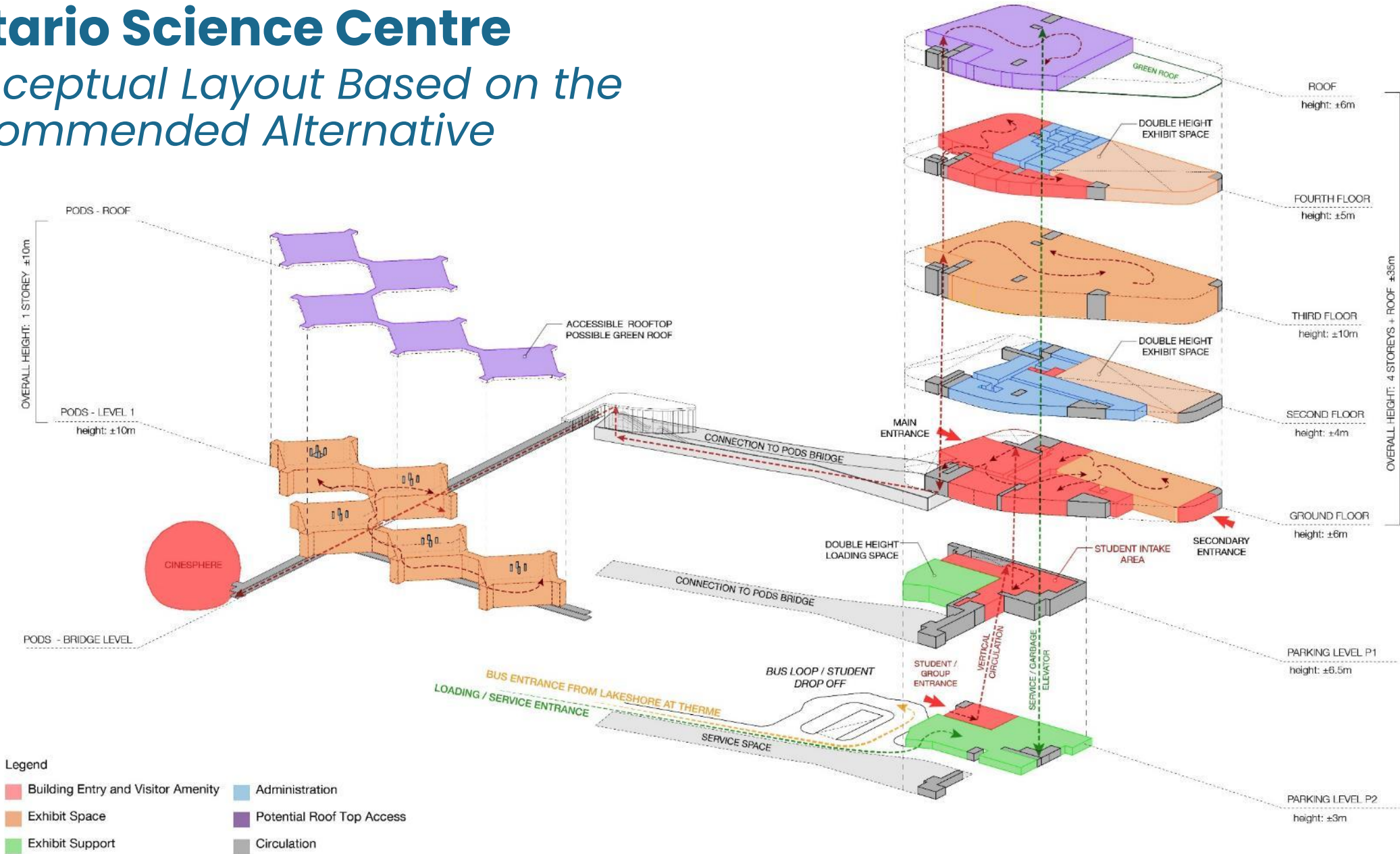
Recommended Alternative

Category	Low (up to 2 storeys; P1 site coverage up to 80%)	Medium (3 to 6 storeys; P1 site coverage up to 55%)	Tall (7 plus storeys; P1 site coverage up to 25%)
Overall Preference	Least Preferred	Preferred	Less Preferred

The **medium (3 to 6 storeys; P1 site coverage up to 55%)** alternative can accommodate all OSC program requirements in an efficient configuration, while maintaining sufficient space on site for a public plaza, transit hub and other gateway or entrance features.

Ontario Science Centre

Conceptual Layout Based on the Recommended Alternative



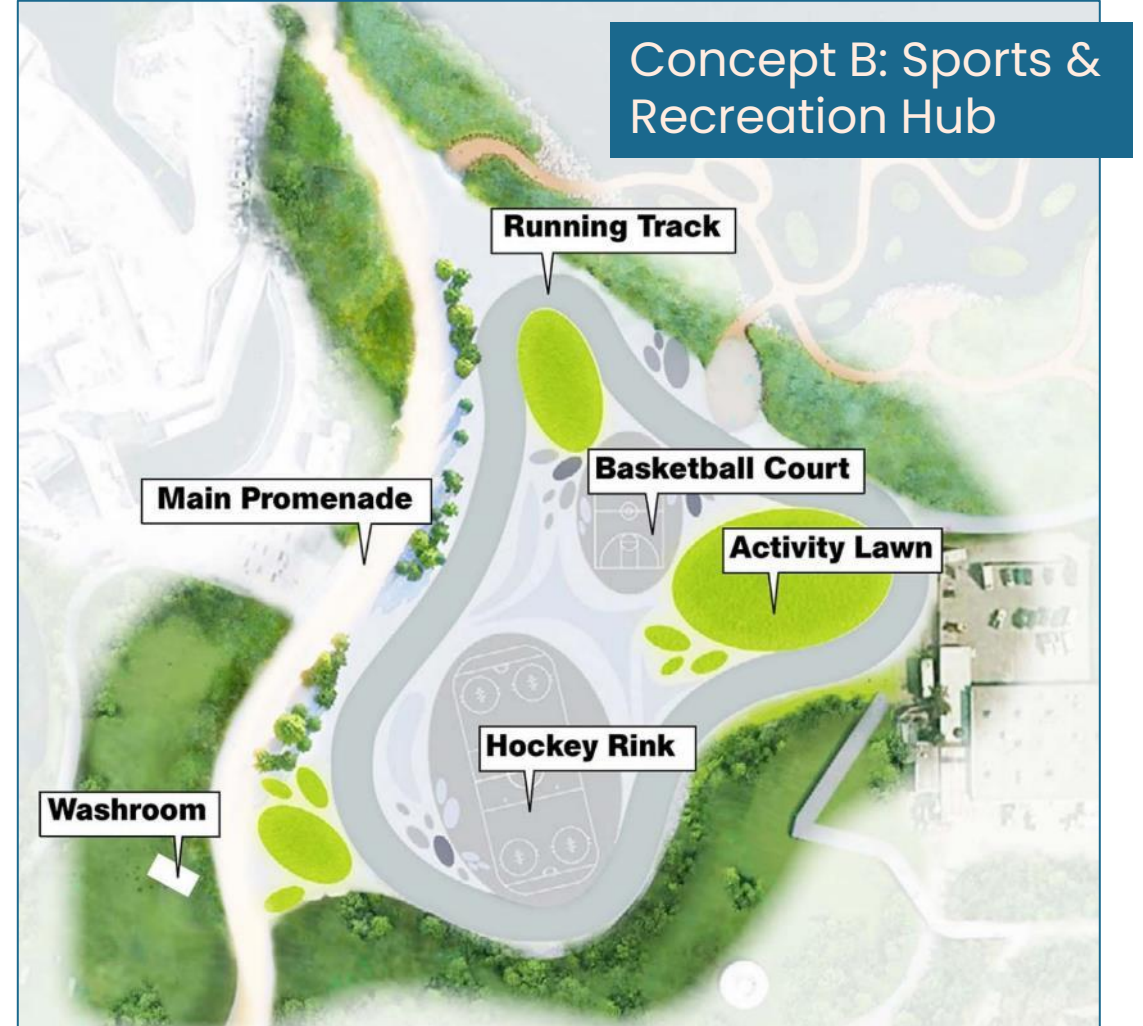
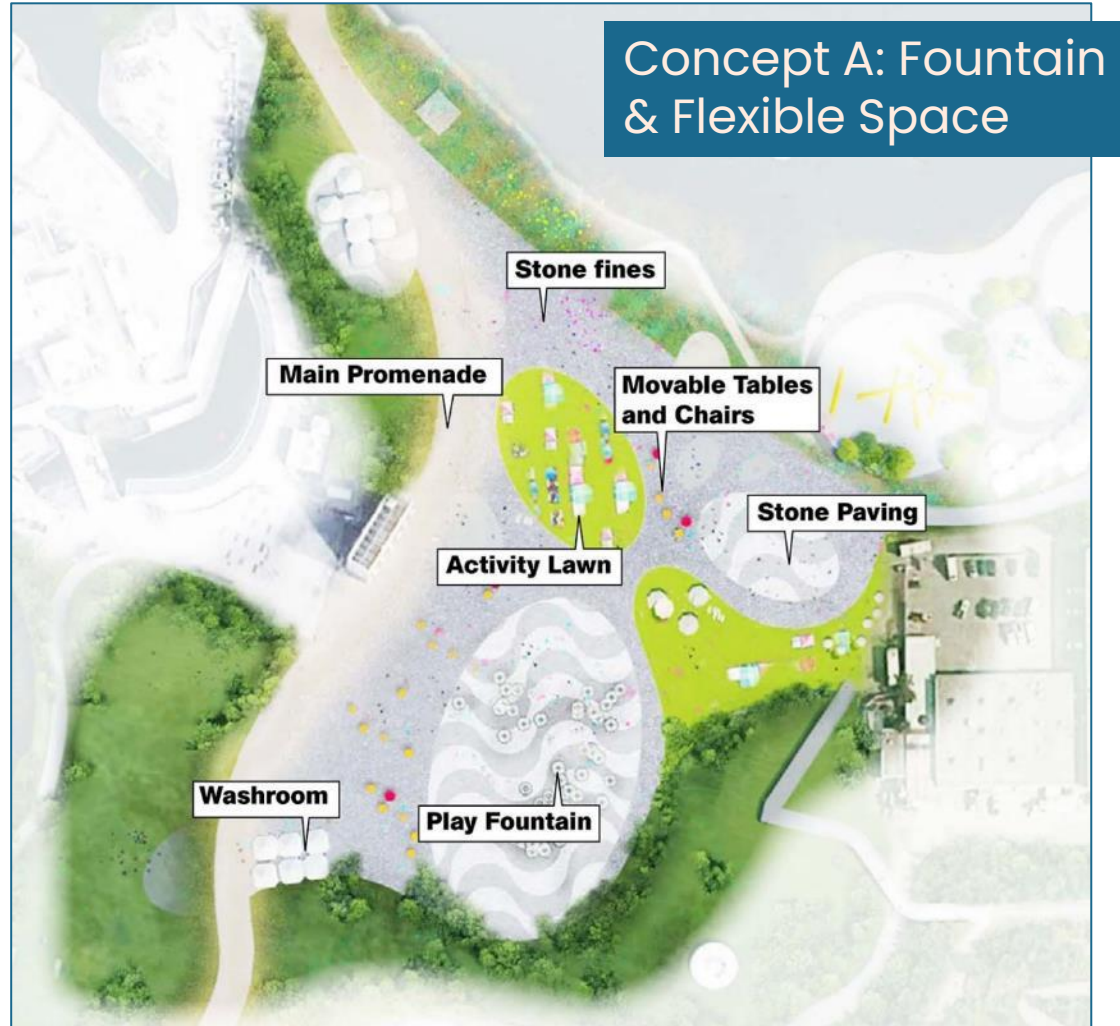
Zone 5: Forum



The Forum

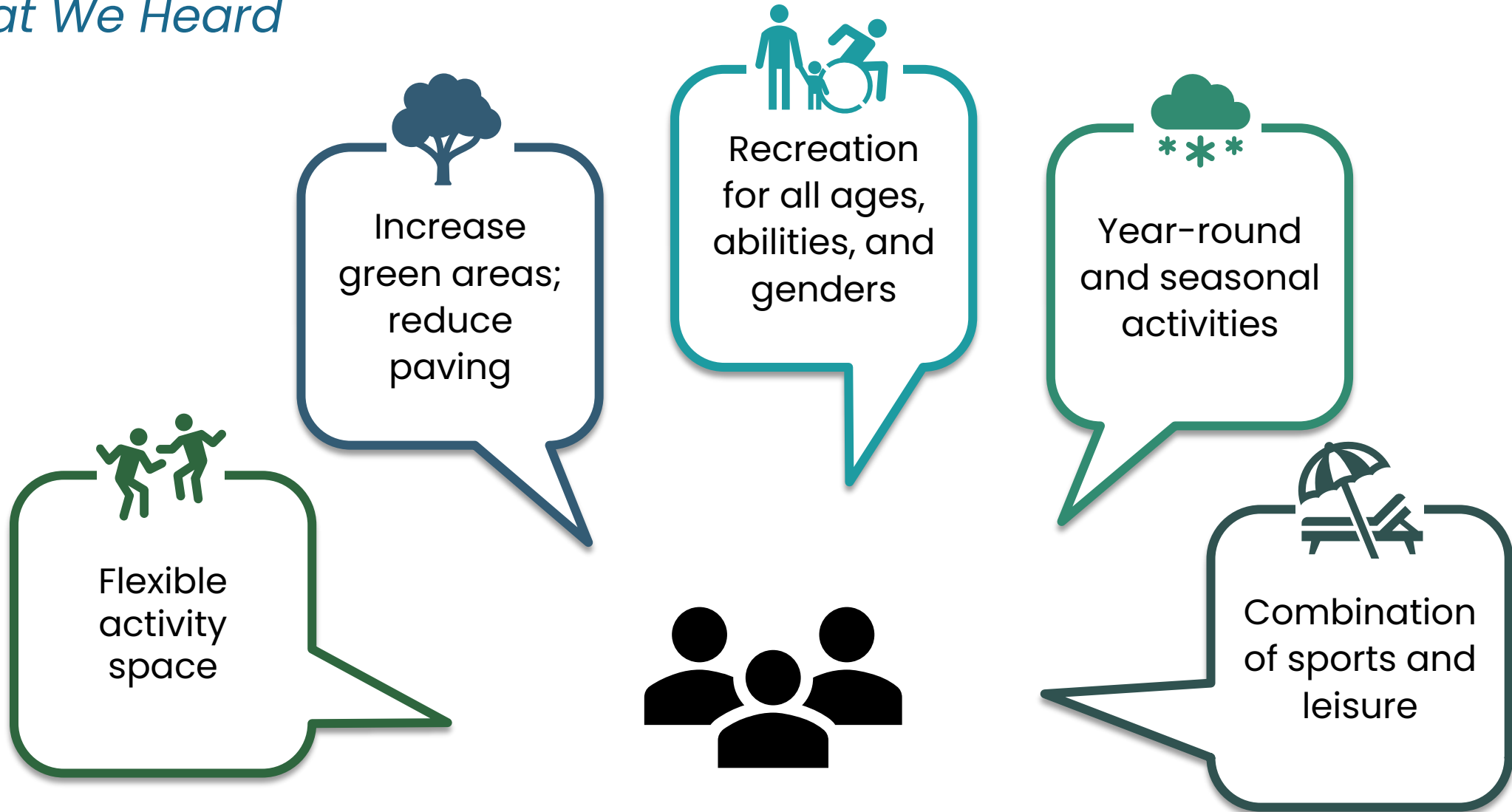
Zone 5: Forum

The Concepts



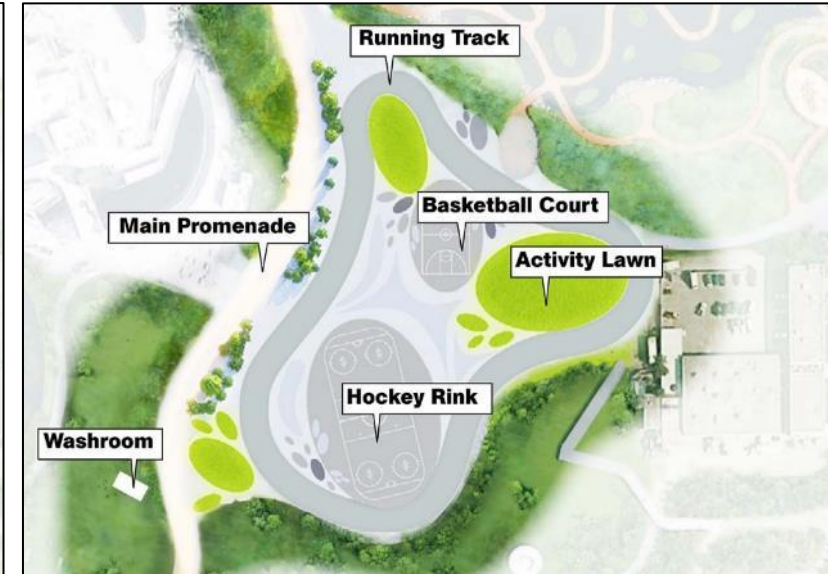
Zone 5: Forum

What We Heard



Zone 5: Forum

The Evaluation



Category	Concept A: Fountain & Flexible	Concept B: Sports & Recreation
Natural Environment	Preferred	Preferred
Social Environment	Preferred	Less Preferred
Cultural Environment	Preferred	Preferred
Technical Environment	Preferred	Less Preferred
Economic Environment	Preferred	Less Preferred
Sustainability	Preferred	Less Preferred
Overall Preference	Preferred	Less Preferred

Zone 5: Forum

Recommended Design

Category	Concept A: Fountain & Flexible	Concept B: Sports & Recreation
Overall Preference	Preferred	Less Preferred

Concept A provides more flexibility and multi-use spaces (including for recreational-based use) while reducing the amount of impervious surface. The concept includes the installation of a Play Fountain, Flexible Sports Court and Stone Amphitheater. Concept A will include design modifications and incorporation of bioswales to better address stormwater management.

Zone 5: Forum

Recommended Design



Main Promenade

Flexible
Event Lawn

Stone Paving

Washrooms

Play Fountain

Woodland Trails

Market Alley

Wind Protection
Berm

Lookout Tower

Stone Bluff

Zone 5: Forum

Design Vision



Weather & Wind Buffer

Natural Stone Seating & Retaining Wall

Play Fountain

Flexible Event Space



Zone 5: Forum

Design Vision



Festive Lighting

Food & Beverage Pavilions

Pop-Up Markets



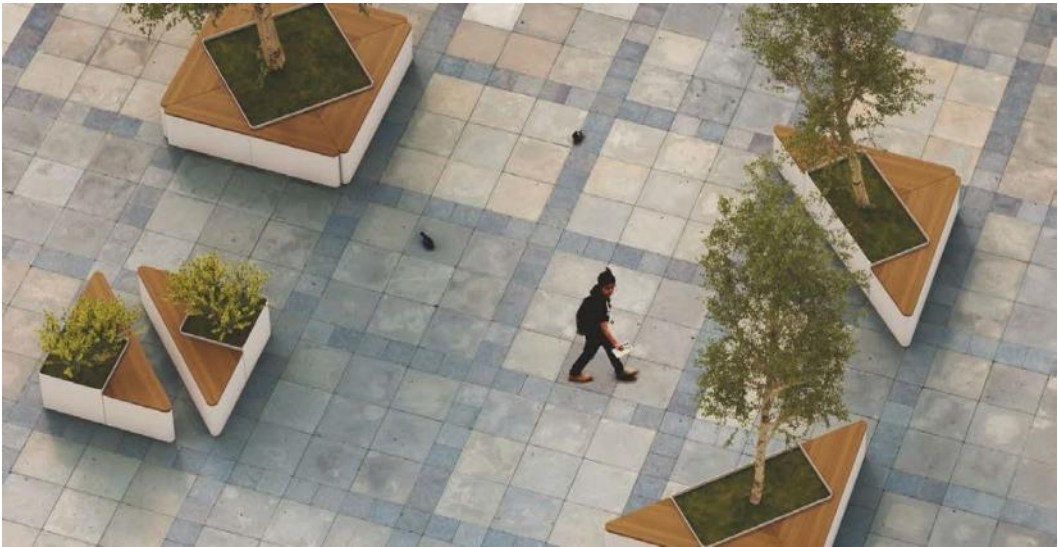
Zone 5: Forum

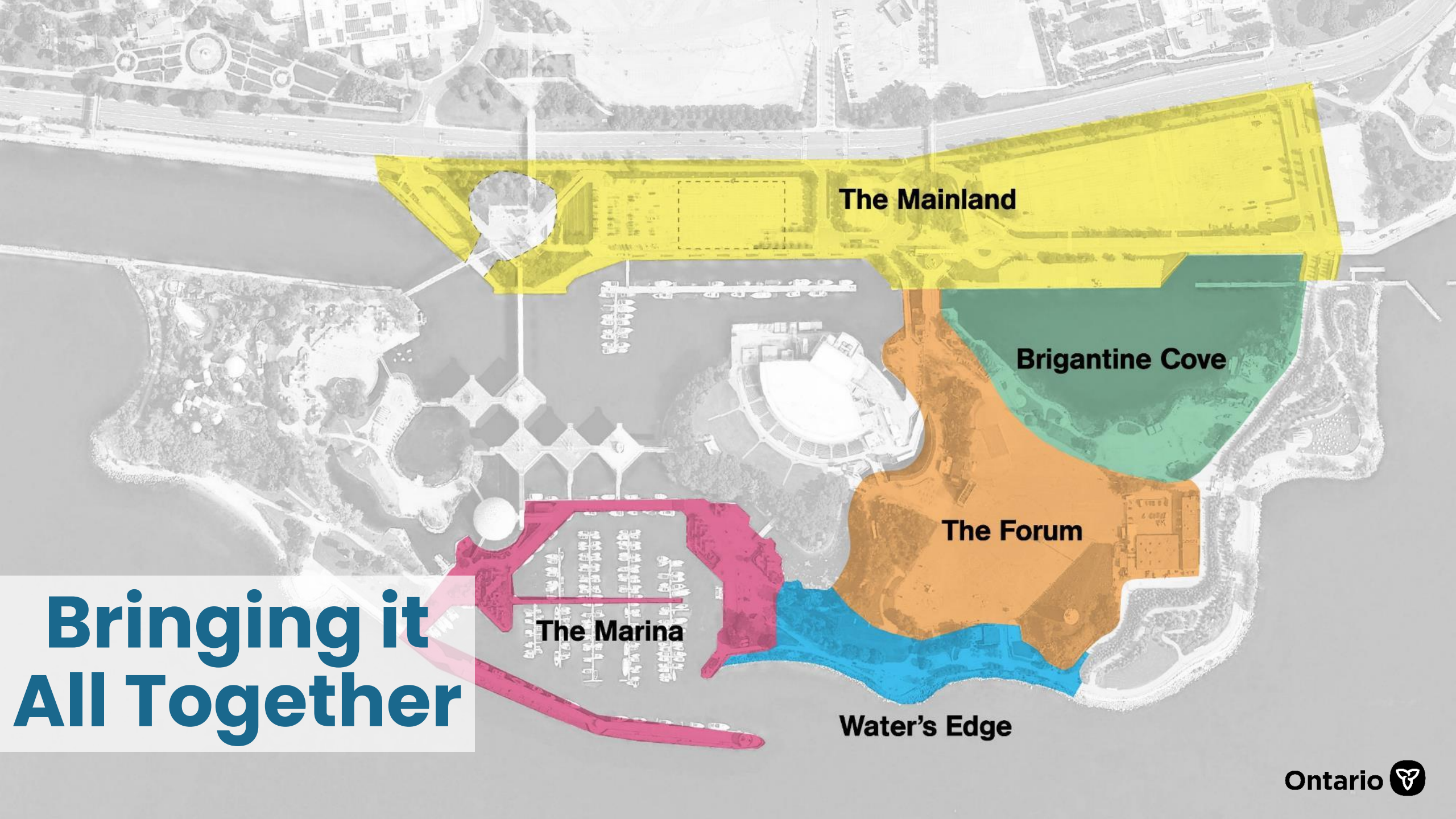
Fountain Winter and Night Precedents



Zone 5: Forum

Flexible Event Space Precedents





The Mainland

Brigantine Cove

The Forum

Water's Edge

The Marina

**Bringing it
All Together**

Overall EA Recommended Design



Overall Redevelopment Preliminary Design

All Publicly Accessible Connections



Overall Redevelopment Preliminary Design

Activity for all Seasons



Breakout Session

Breakout Overview

- The breakout rooms will be led by a facilitator. The breakouts will not be recorded, but a notetaker will be present to take notes.
- If you would like ASL or captioning, please remain in the main room.
- To contribute during the discussion, please use the “raise hands” feature if you would like to say your thoughts by video or microphone – video is not mandatory. You are also welcome to type your comments using the chat function which will be turned on for the breakouts.
- The breakout session will last for approximately 30 minutes.



Upcoming Work and Wrap Up

Project Updates

Onsite Works

- Work is ongoing to repair the pods, bridges and Cinesphere complex.
 - › Repair work is expected to continue until early 2024.
- Servicing work is expected to commence onsite in May 2023.
- For their protection, artwork and a monument onsite will be temporarily relocated prior to construction.
- The final Heritage Impact Assessment is expected to be completed by early Summer 2023.



Upcoming Work



- The draft **Environmental Study Report** (ESR) documenting the EA process, the **preferred design** and mitigation measures will be posted for a **60-day public comment** period in Summer 2023.



- The **Municipal Development Application resubmission** to the City is targeting Summer 2023.



- A final Ontario Place public realm **Engagement Event** (4) will be held in early **Fall 2023** to review the conclusion of the ESR and provide updates on project implementation.



Wrap Up

Staying Engaged

- Visit our **Virtual Public Engagement Room (VPER)** for more details about the project and opportunities to provide feedback:

English:

<https://engageontarioplace.ca/virtual/>

French:

<https://engageontarioplace.ca/fr/virtuelle/>

- The VPER comment function will remain open until **May 19, 2023**.
- Stay up to date and learn about future engagement opportunities by visiting www.EngageOntarioPlace.ca

Thank you

Please share your feedback about this engagement event by visiting:

<https://www.surveymonkey.com/r/F9CWN3P>

