

# Welcome

## The Revised Proposal for Ontario Place



# The Team

## **Infrastructure Ontario**

*Applicant*

## **Urban Strategies Inc.**

*Overall Master Plan and Approvals*

## **LANDinc**

*East Island and Mainland Design*

## **Martha Schwartz Partners**

*East Island and Mainland Design*

## **Therme Canada**

*West Island Design*

## **Diamond Schmitt Architects**

*West Island Design*

## **STUDIO tla**

*West Island Design*

## **Baird & Associates**

*West Island Shoreline Engineers*

## **SLR Consulting**

*Shoreline and Terrestrial Ecology*

## **Shoreplan Engineering**

*Shoreline Consultant*

## **ERA Architects Inc.**

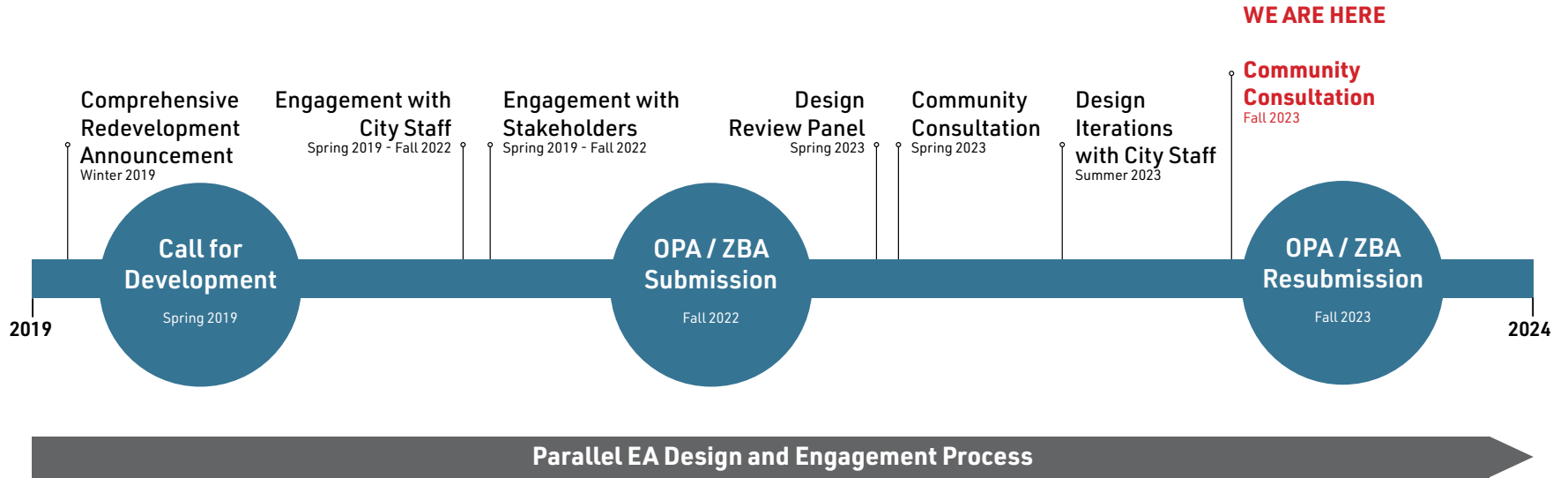
*Heritage Consultant*

## **LEA Consulting**

*Transportation Consultant*

# Development Application

## Project Schedule and Engagement



# Project Overview

## The History and Vision for Ontario Place

1971  
ONTARIO PLACE OPENS



Early 1990s  
EXPANDING THE ISLAND AND PARK  
PROGRAMMING



Early 2010s  
CLOSURE AND REVITALIZATION  
EFFORTS



CONCERTS AT THE  
FORUM



CHILDREN'S PLAY  
VILLAGE



WILDERNESS ADVENTURE  
RIDE



MOLSON AMPHITHEATER



EXPANDING THE  
WATERPARK



SEASONAL FLOODING



OPENING OF TRILLIUM PARK



CALL FOR REDEVELOPMENT

# Program Partners

## Live Nation - Future Application



Conceptual Massing for Live Nation



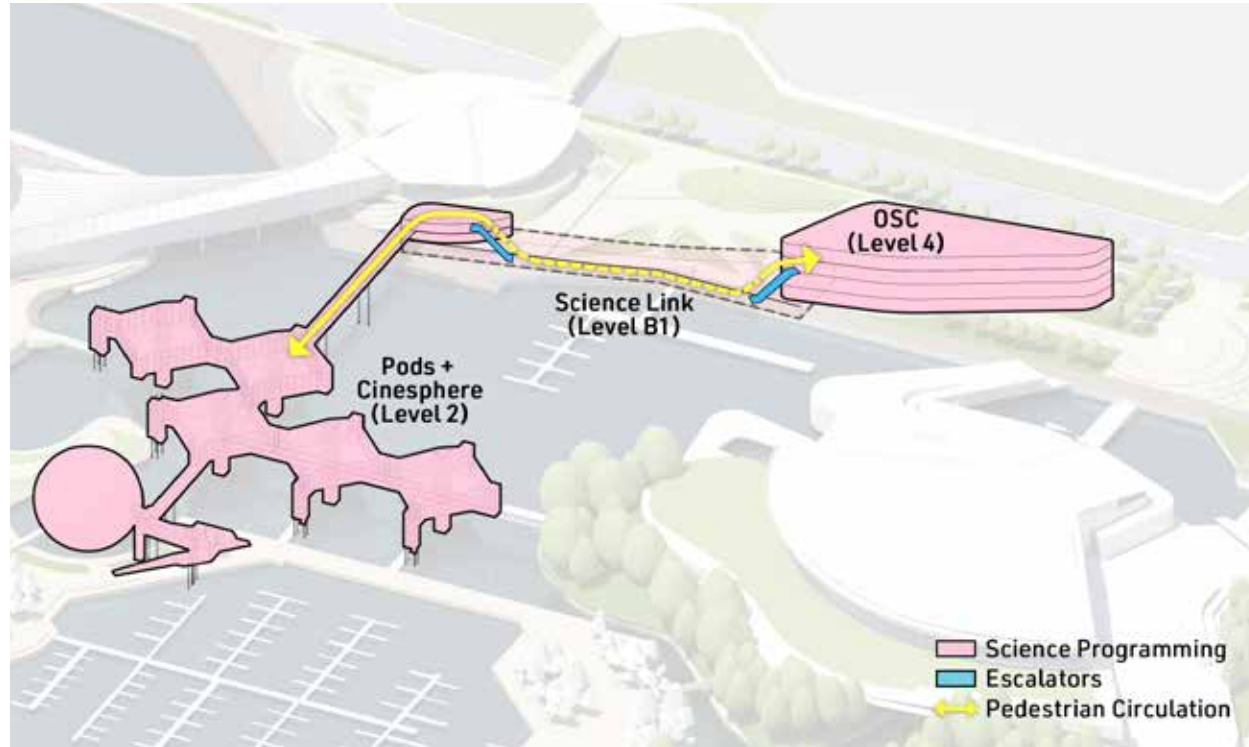
Live Nation: Proposed Indoor/Outdoor Experience



Live Nation: Existing Programming

# Program Partners

## Ontario Science Centre - Future Application



Conceptual Massing for Ontario Science Centre



OSC: Educational Programming



OSC: Kid's Discover Play

# The Opportunity



**Inviting all Ontarians**



**Expanding a Cluster of Existing Uses**



**Creating Year-Round Destinations**



**Re-imagining the legacy of Ontario Place**

# The Opportunity

## Connecting Ontario Place to a Network of Waterfront Destinations

### TORONTO WATERFRONT DESTINATIONS

PARKS BEACHES ATTRACTIONS





# The Revised Master Plan

## Revitalization Ambitions



### Green Space

New Free Public Spaces



### Access

Preserve A Publicly Accessible Waterfront



### Water

Increased Water Access



### Heritage

Restoring the Pods & Cinesphere and Preserving Cultural Heritage



### Wetlands

New Aquatic Habitat and Wetlands



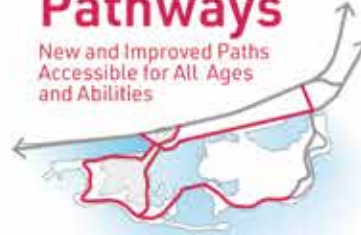
### Trees

Expanded Free Public Park Space and New Opportunities to Gather



### Pathways

New and Improved Paths Accessible for All Ages and Abilities



### Recreation

Animating the Public Realm



# What We've Heard

## 1 Prioritize the Public Experience

- Concern that the private areas and building size could diminish the public experience
- Make the entrance to the West Island feel public and create more public pathways throughout
- Public realm master plan design directions are generally encouraging

## 2 Prioritize Heritage

- The Hough landscape experience and its intents
- Views to the Pods and Cinesphere
- Consider the built form relationship to the Pods and Cinesphere

## 3 Transportation and Parking

- Prioritize transit and active transportation
- Reduce vehicular mode share and parking



# Key Change #1

## Create a Welcoming Public Entrance to the West Island

Revised Welcome Pavilion Design



November 2022 Submission



# Key Change #2

## Extend the Landscape up over the Building

Public Realm on Therme Rooftop



November 2022 Submission



# Key Change #2

## Extend the Landscape up over the Building



### Key Statistics

**~ 12.5 acres** Public space (at grade)

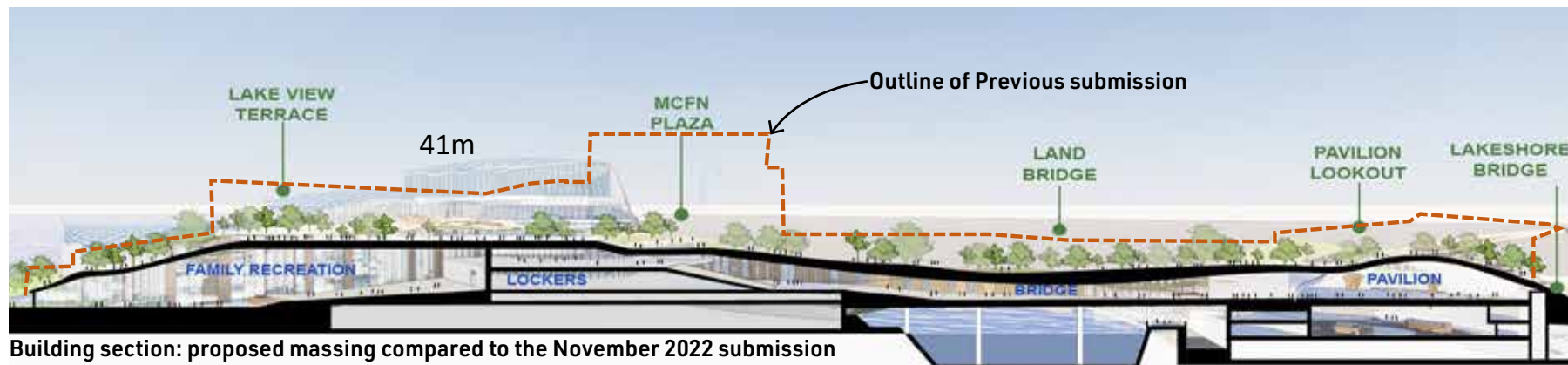
**~ 3.4 acres** Public space (roof)

**~15.9 acres** Total West Island public space

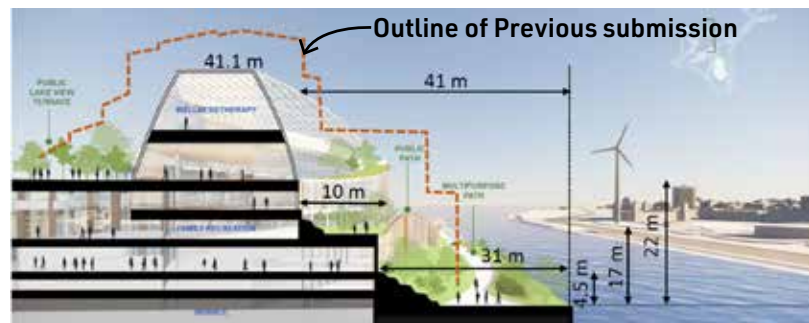
**+35%** Increase from November 2022 submission

# Key Change #3

## Reduce the Scale of the Therme Building



Building section: proposed massing compared to the November 2022 submission



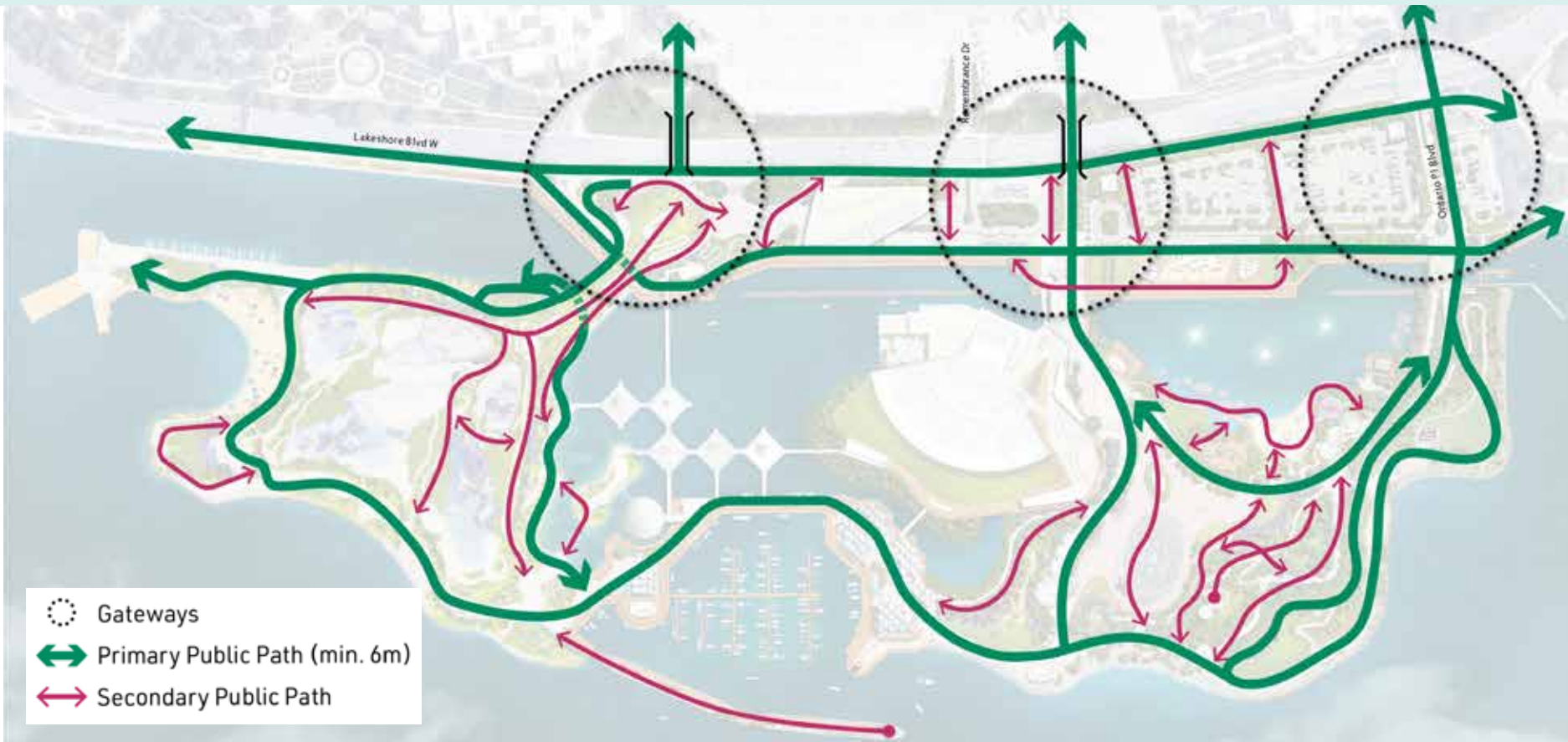
North Shore: Revised Design

### Key Statistics

- ↓ **25%** Reduction in Building Volume
- ↓ **Up to 10m** Reduction in Building Height

# Key Change #4

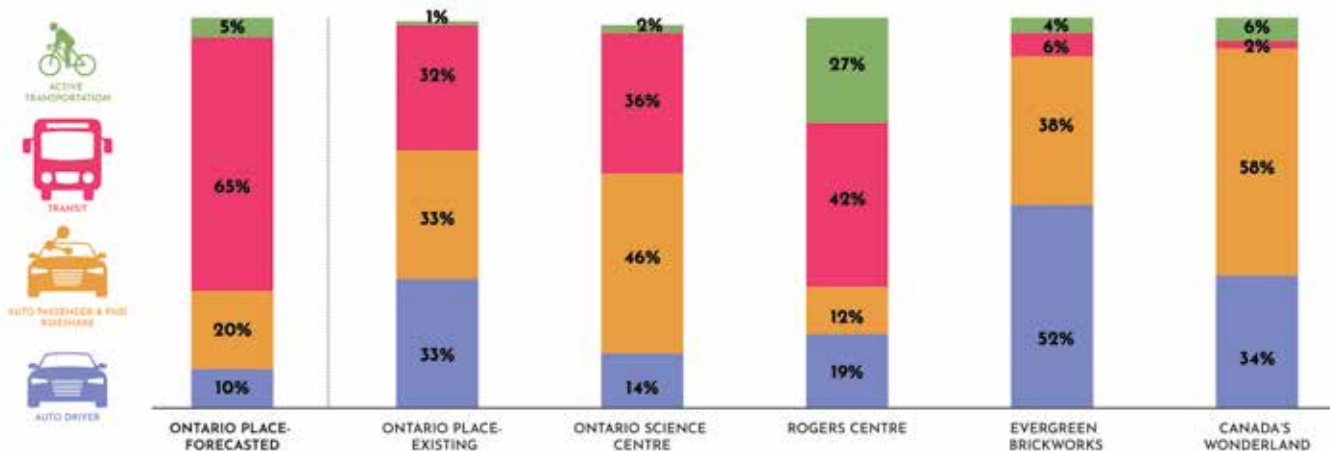
## Better connect to the City with Improved Mobility Options



# Key Change #4

## Better connect to the City with Improved Mobility Options

### Modal Split Comparison



### Key Statistics

↓ **225** Reduction in Vehicle parking spaces

↑ **577** Increase in bike parking spaces



# Key Change #5

## Create more Waterfront Programming and Open Space



August, 2023

Conceptual design only.  
Subject to further consultation and outcomes from the EA and  
government approval processes.

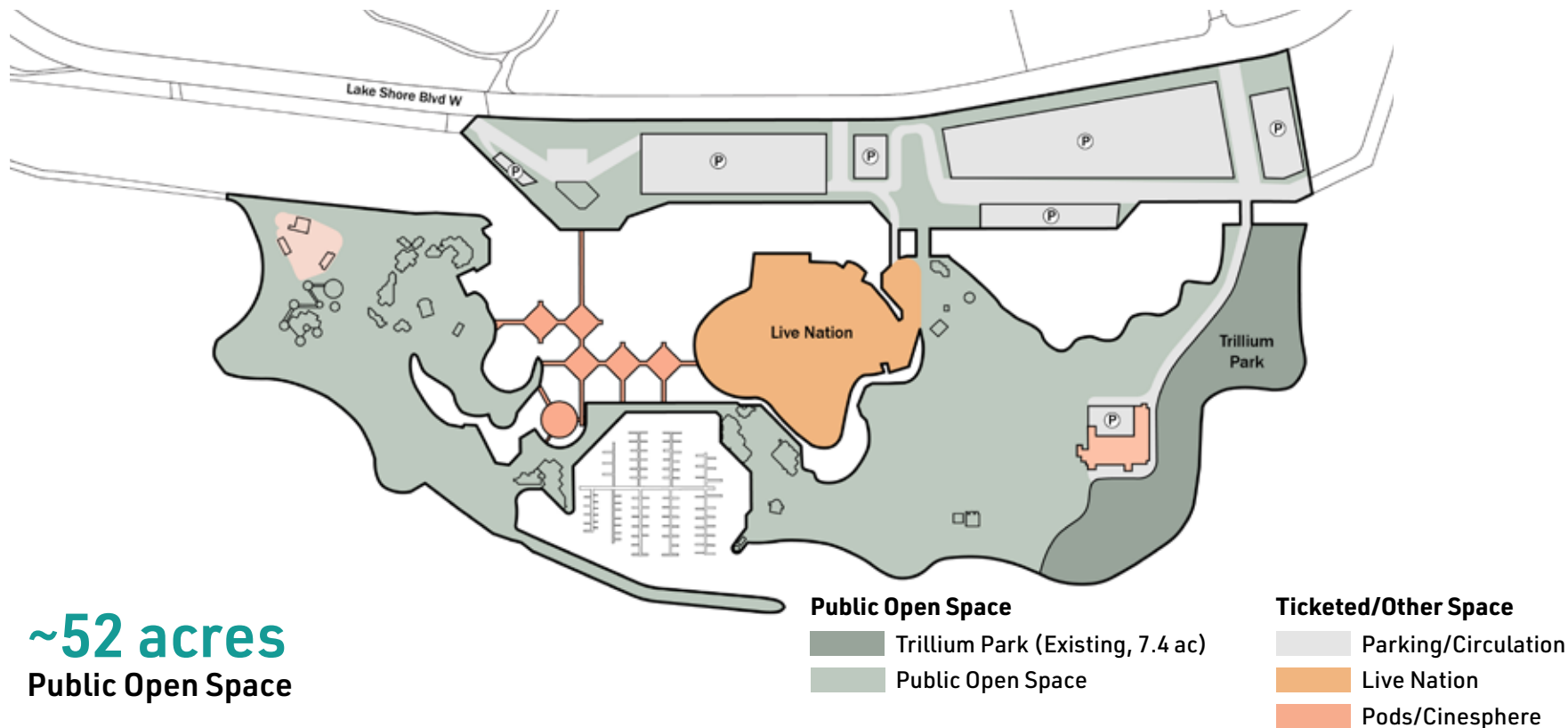
# Key Change #5

## Create more Waterfront Programming and Open Space



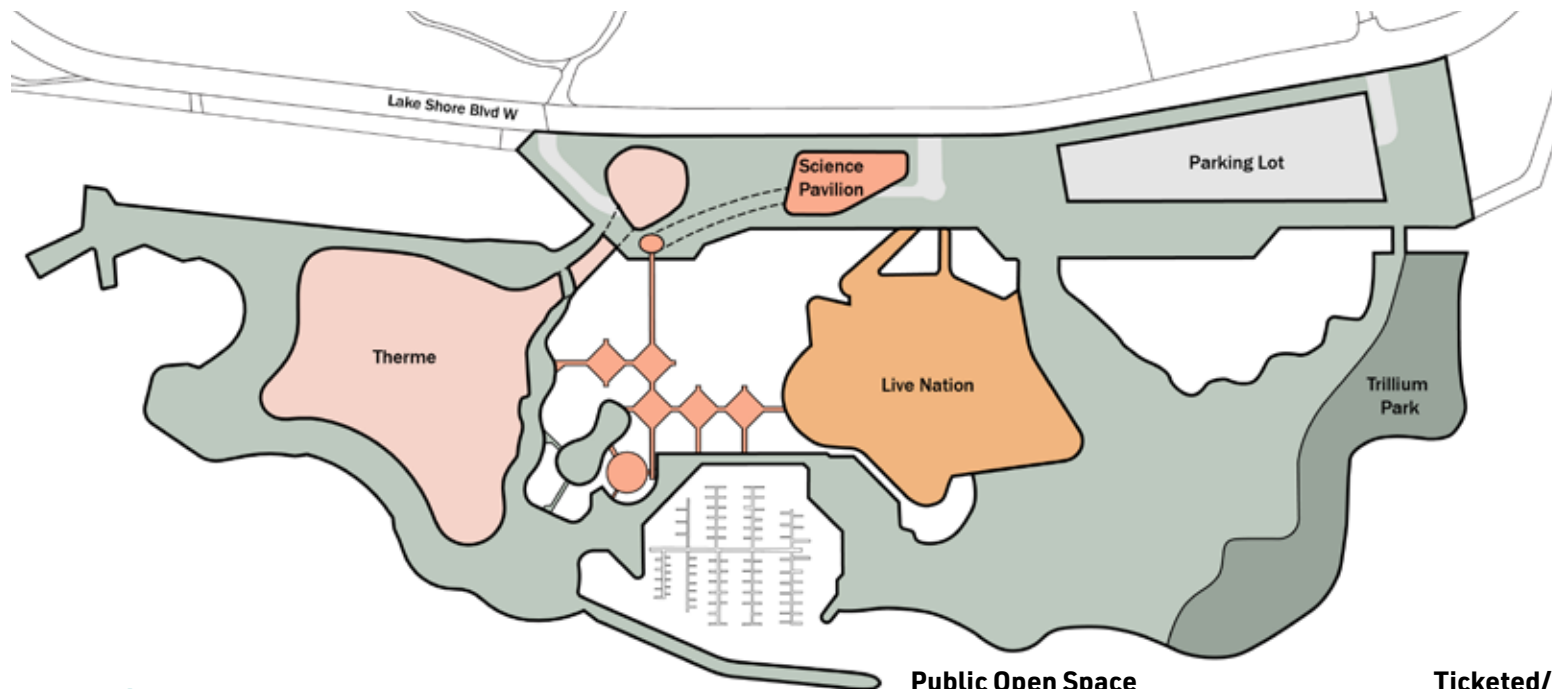
# Public Space at Ontario Place

## Existing



# Public Space at Ontario Place

November 2022 Submission



**~58 acres**  
Public Open Space

## Public Open Space

- Trillium Park (Existing, 7.4 ac)
- Public Open Space
- Rooftop Public Open Space (3.4 ac)

## Ticketed/Other Space

- Parking/Circulation
- Live Nation
- Ontario Science Centre
- Therme

# Public Space at Ontario Place

## Revised Submission (Current Proposal)



**~61 acres (+9 acres)**  
Public Open Space

### Public Open Space

- Trillium Park (Existing, 7.4 ac)
- Public Open Space
- Rooftop Public Open Space (3.4 ac)

### Ticketed/Other Space

- Parking/Circulation
- Live Nation
- Ontario Science Centre
- Therme

# The Revised Master Plan



# Revised Proposal

## West Island: Built Form



Aerial View Looking South West

# Revised Proposal

## West Island: Built Form



East facade facing the Pods and Cinesphere



Access from Lakeshore Blvd



Thème Guest Entrance



# Revised Proposal

## Therme Programming

### Family Recreation



**66%**  
of guests

Indoor/Outdoor Pools  
Waterslides  
Wave Pool  
Children's Play  
Water Based Exercise Classes  
Lounge Chairs  
Healthy Food & Beverage  
Mineral Baths  
Steam Rooms  
+16 Zone

### Wellness



**21%**  
of guests

Indoor/Outdoor Pools  
Healthy Food & Beverage  
Exercise Classes  
Lounge Chairs  
Mineral Baths  
Themed Saunas  
Steam Rooms  
Personal Care Services

### Therapy



**13%**  
of guests

Indoor/Outdoor Pools  
Healthy Food  
& Beverage  
Exercise Classes  
Lounge Chairs  
Mineral Baths  
Steam Rooms  
Personal Care  
Services

Number of  
Daily Guests

14,000  
PEAK  
WEEKEND  
DAY

8,250  
TYPICAL  
WEEKEND  
DAY

4,250  
TYPICAL  
WEEKDAY

# Revised Proposal

## Therme Programming



Indoor Pool and Waterslides



Rooftop Pool - Therapy Facility

# Revised Proposal

## Public Realm: West Island



# Revised Proposal

## Public Realm: West Island

Rooftop public open space



View from Rooftop

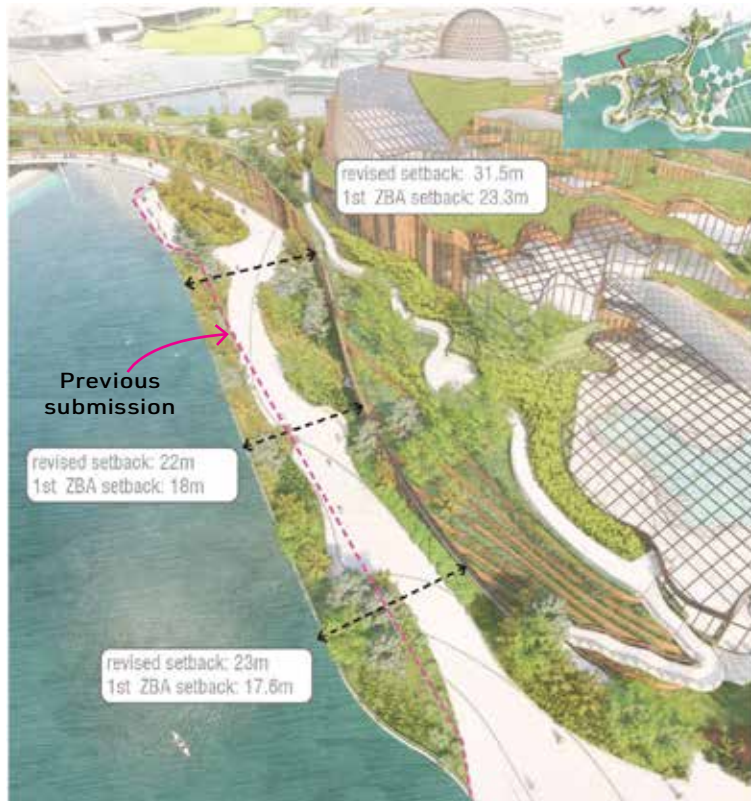


View on Land Bridge



# Revised Proposal

## Public Realm: West Island



North Shore



East Shore

# Revised Proposal

## Public Realm: West Island



Public Beach

# Revised Proposal

## Public Realm: West Island



West Headland

STUDIO **fla**

# Revised Proposal

## Public Realm: East Island and Mainland





# Revised Proposal

## Public Realm: South Shore and Marina



Extending the William G Davis Trail across the south shore



Land to Water Rock Pier



Marina Village Pavilions

# Revised Proposal

## Public Realm: East Island



Proposed Forum play fountain with interactive jets for all ages



Brigantine Cove beach



Children's play area

# Revised Proposal

## Public Realm: Mainland



East Bridge: Water Access



Central Gateway



East Bridge: Pedestrian Access



Mainland Promenade and Boardwalk

# Revised Proposal

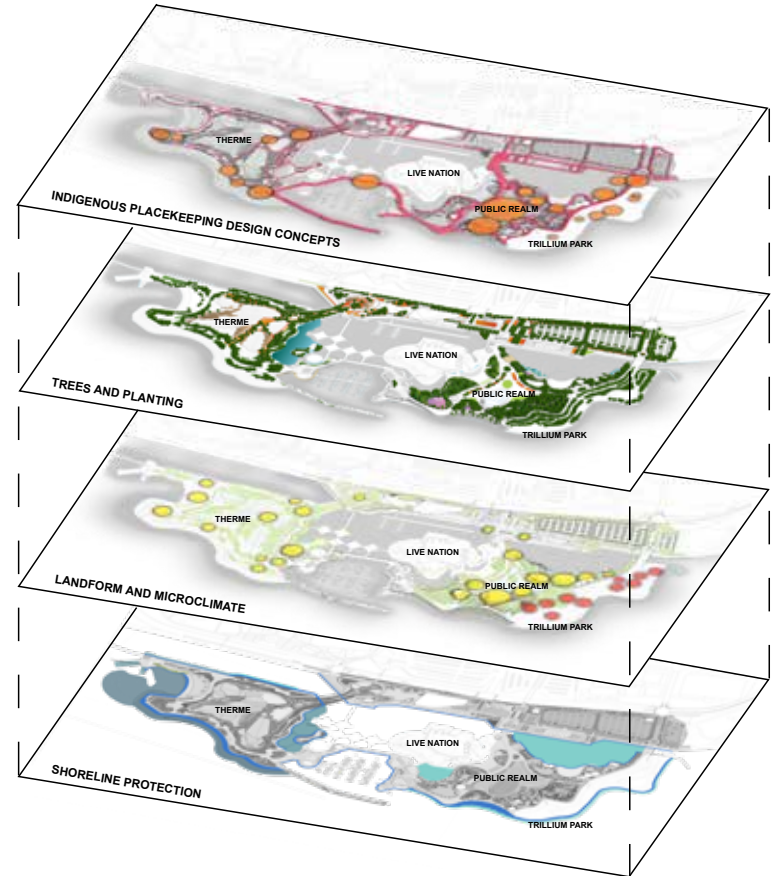
## Public Realm: Indigenous Placekeeping

### Indigenous participants:

- Made recommendations on the potential Indigenous place-making design concepts.
- Favour a planting palette of native plant species.
- Are partial to the use of landforms to create microclimates that increase biodiversity and make event spaces more comfortable for year-round use.
- Are supportive of plans to develop wetlands, and to protect and enhance aquatic habitats.

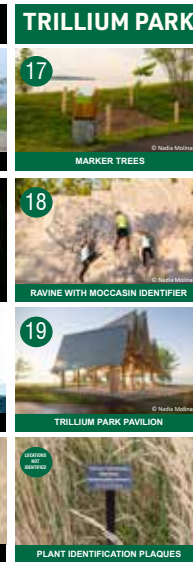
### Note:

- Plans are conceptual and subject to change until verified through the EA process and government approvals.
- Placekeeping concepts are subject to further consultation with Indigenous communities and the Province.



# Revised Proposal

## Indigenous Placekeeping Concepts Under Consideration



Note:

- Plans are conceptual and subject to change until verified through the EA process and government approvals.
- Placekeeping concepts are subject to further consultation with Indigenous communities and the Province.

# Natural Heritage: Terrestrial

## New Planting for Bigger, Better Canopy



2,900+ Proposed New Trees

# Natural Heritage: Aquatic

## Proposed Shoreline and Aquatic Habitat Improvements



# Heritage

## Reflecting the Michael Hough Principles





# Thank you

