

# Ontario Place Public Realm | Design Update



# Agenda

**Intro: Vision & Purpose [IO/LANDinc]**

**Part 1: Foundation Redevelopment [LANDinc]**

Existing Condition Challenges  
Redevelopment Strategy Overview

**Part 2: OPPR Design Updates [LANDinc]**  
Public Realm Zones Breakdown

**Part 3: Budget and Schedule [IO]**



# Vision

MOI IO  
slides  
inserted  
here

# Part 1 | Foundational Redevelopment



# Existing Condition Challenges



## 1) Shoreline Degradation

- Erosion
- Flooding
- Wave uprush
- Public safety hazard



## 4) Servicing

- Servicing in place today does not meet the standard required for tenants or the program needs of the future site.



## 2) Structures

- Damaged buildings
- Abandoned buildings
- Buildings in the flood plain



## 5) Roads and Pathways

- Car centric site today
- Pedestrian experience secondary
- Active transportation not prioritized



## 3) Soil Contamination

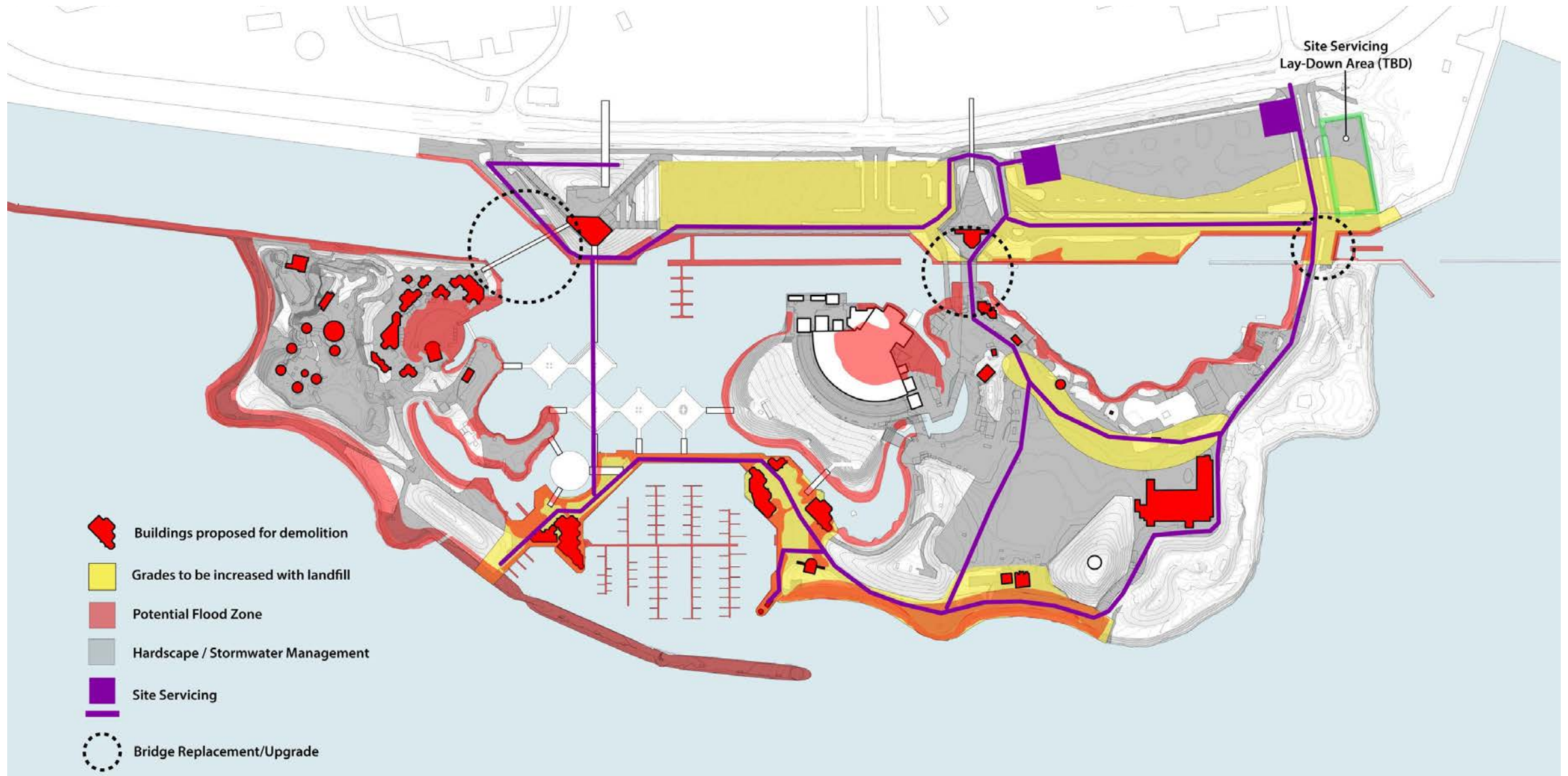
- Contaminated fill from when the island was created
- Requires permits and proper disposal



## 6) Landscape

- Dead and diseased trees
- Lack of programming
- Non-permeable paving

# Foundational Redevelopment Requirements



# Environmental Assessment Area

- The Environmental Assessment was completed for the OPPR area in November 2023
- All documentation can be found in the Environmental Study Report



# Proposed Ontario Place Public Realm

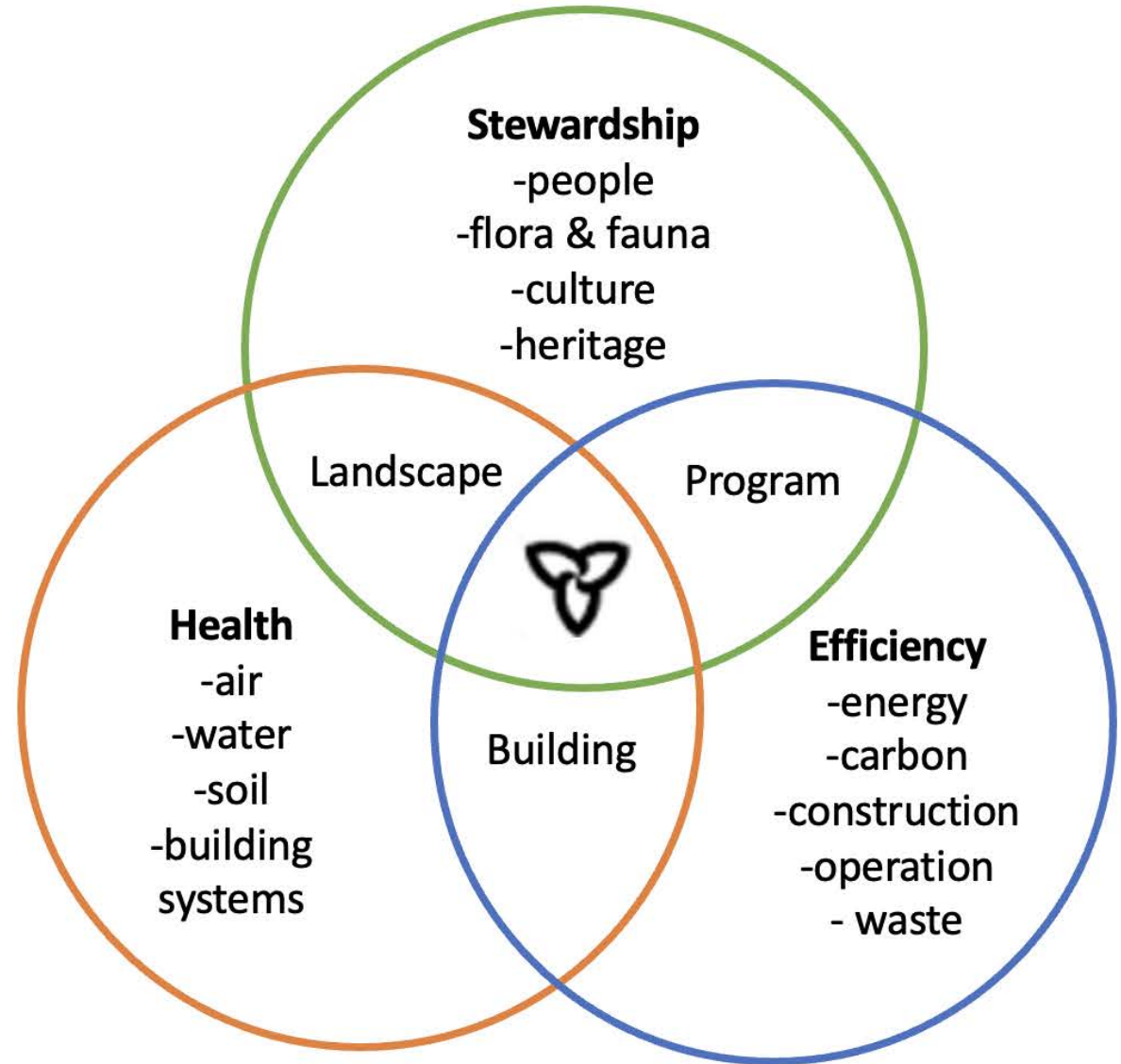




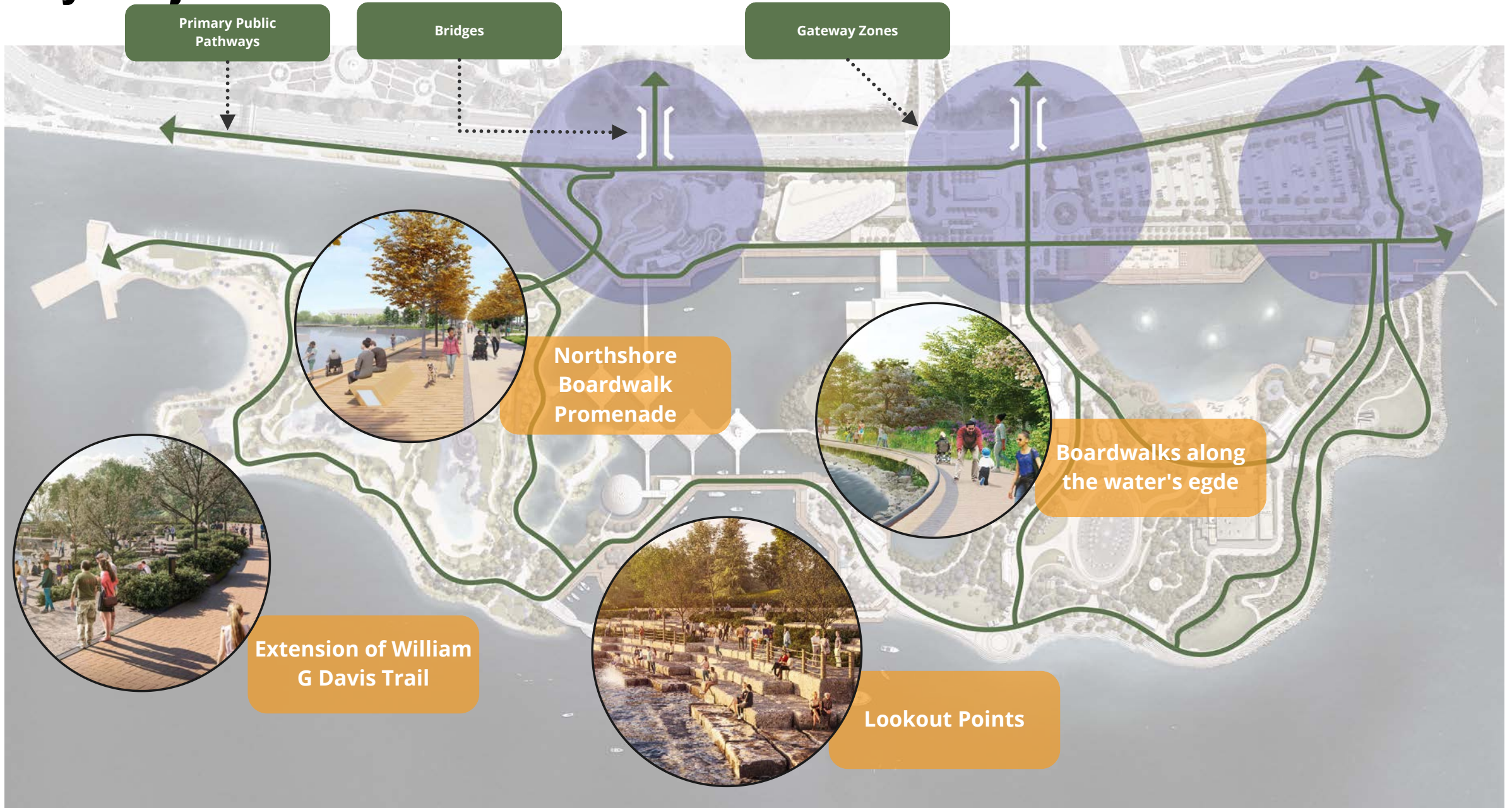
# Indigenous Placekeeping Vision

Our vision is to create a series of "Placekeeping" projects that do more than just preserve the past; they will **breathe life into Indigenous stories, celebrate Indigenous cultures, and inspire future generations.** This park will be a place where the **whispers of Indigenous ancestors are heard**, where the beauty of **Indigenous traditions is visible**, and where the **strength of Indigenous communities is felt.**

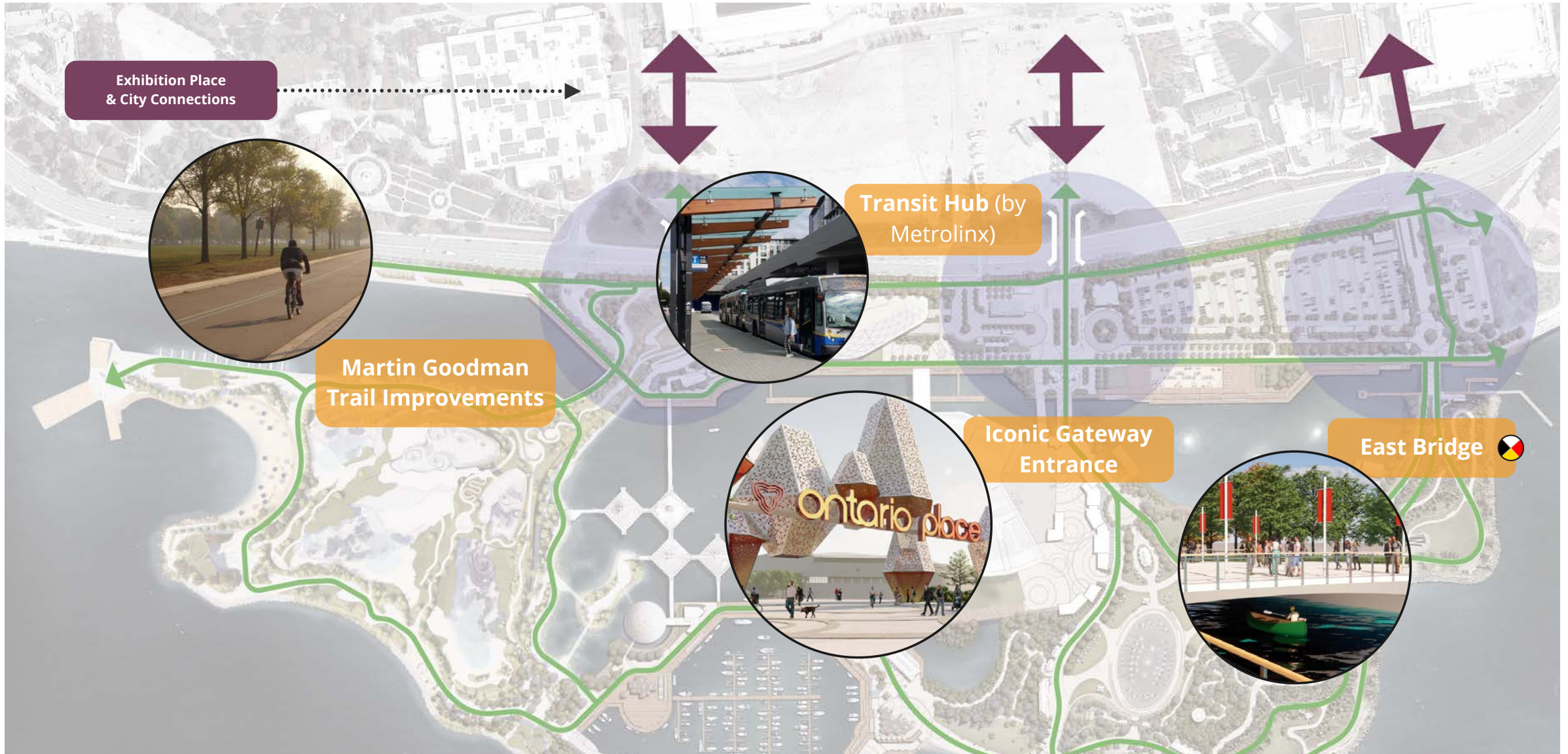
Indigenous Placekeeping Icon = 



# Key Projects: Restore and Secure Continuous Public Access



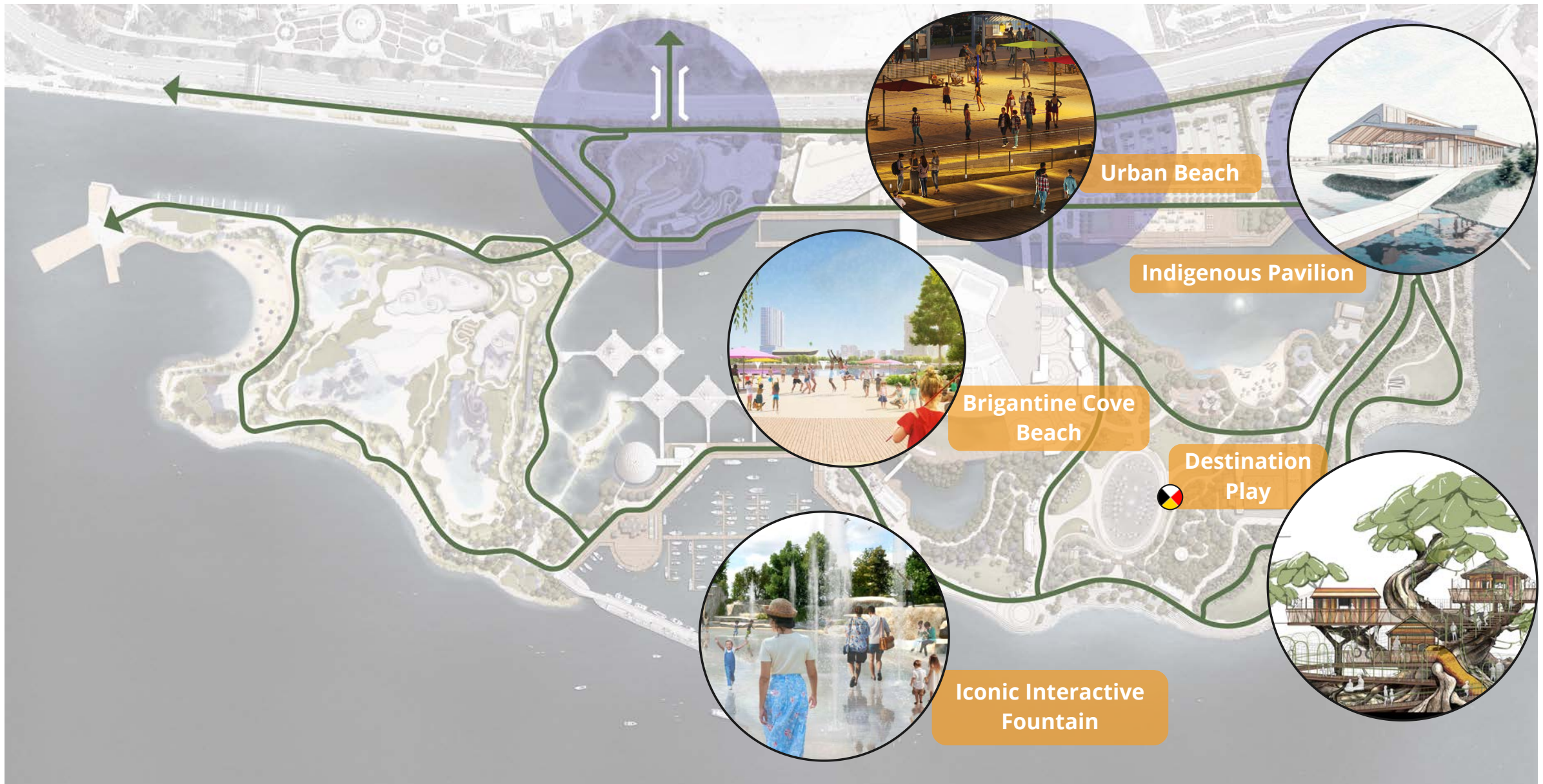
# Key Projects: Integrating Ontario Place with Exhibition Place and City



# Key Projects: Enhancing Long Term Resilience and Sustainability



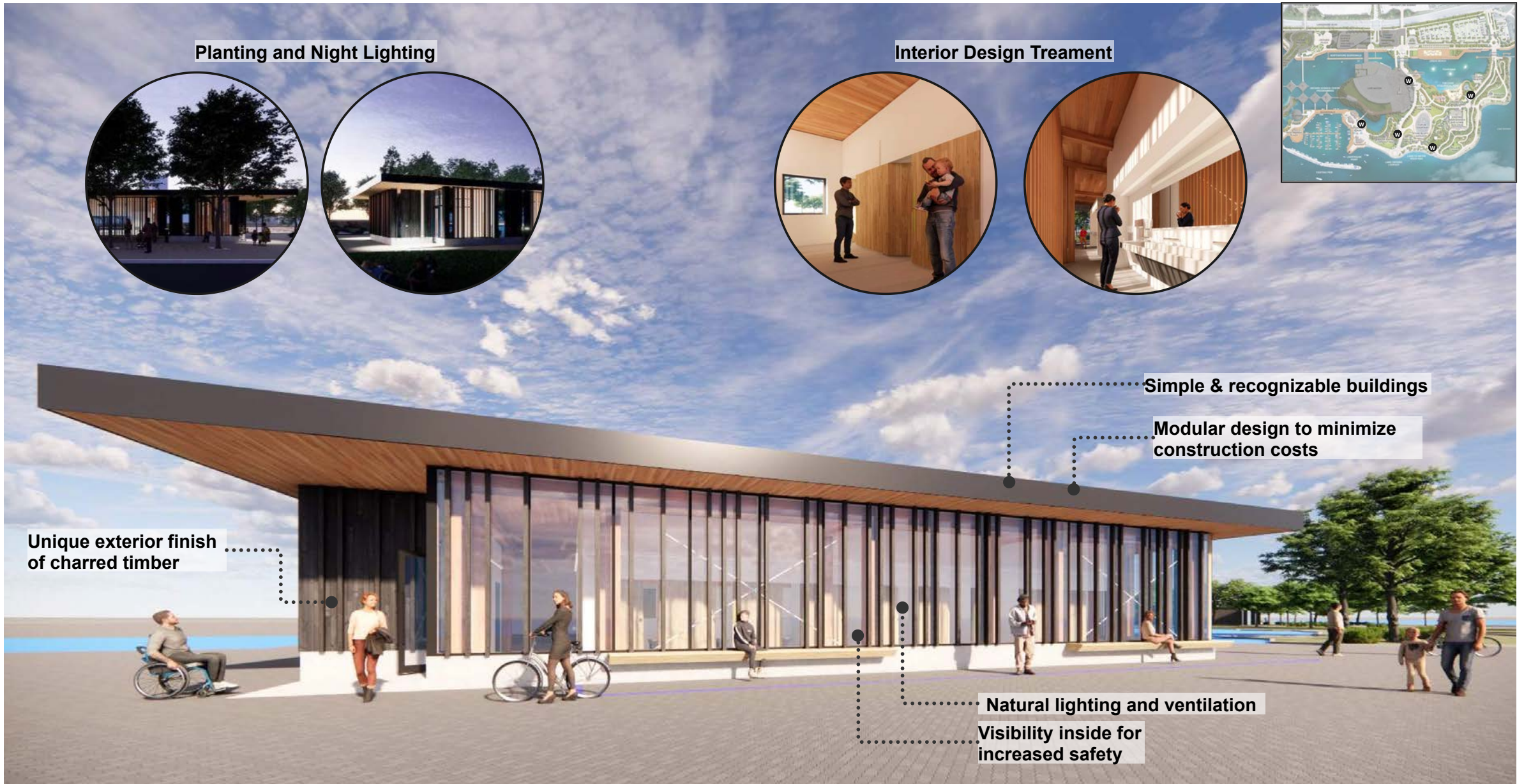
# Key Projects: Upgrade Public Spaces and Programming Opportunities



# What's Not in OPPR Scope



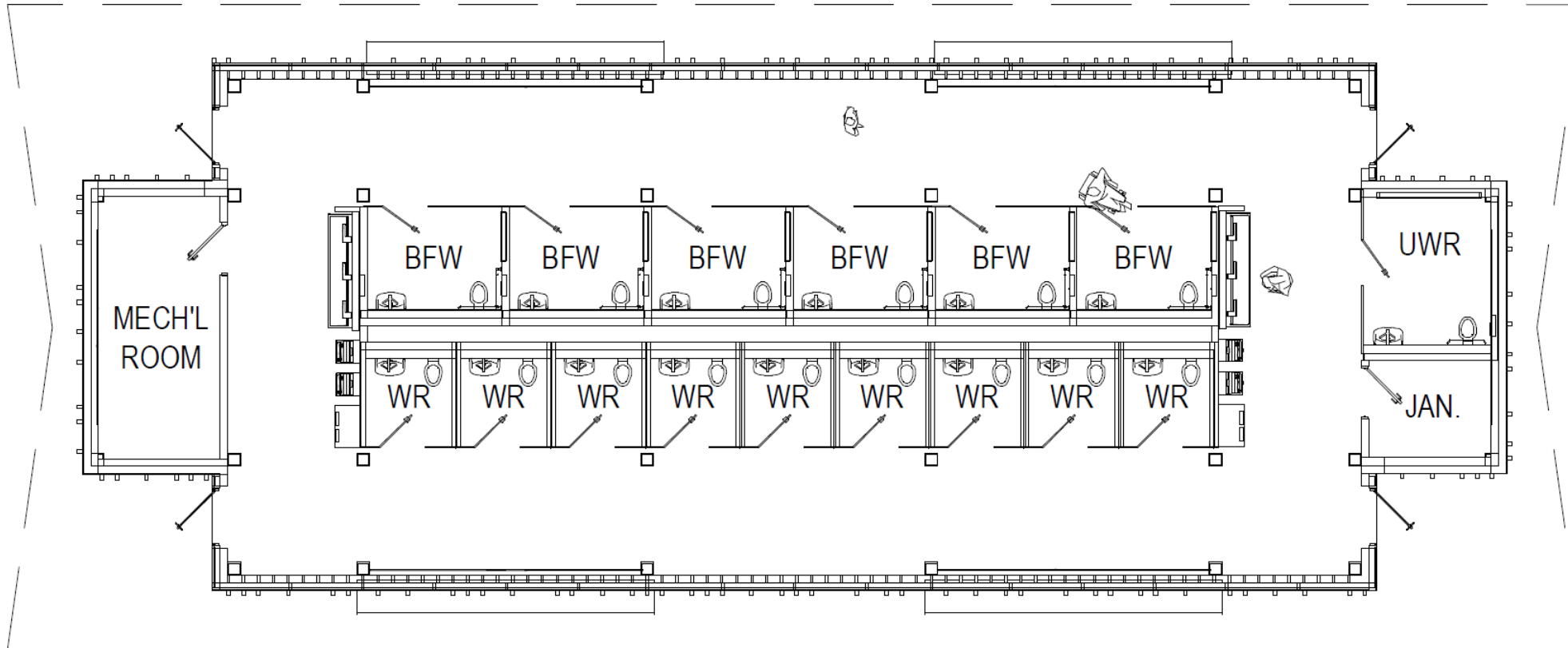
# OPPR Public Washroom Designs



# Public Washroom Layouts

WR = Washroom

BFW = Barrier Free Washroom



Sustainable materials and solar panels



Gender neutral stalls

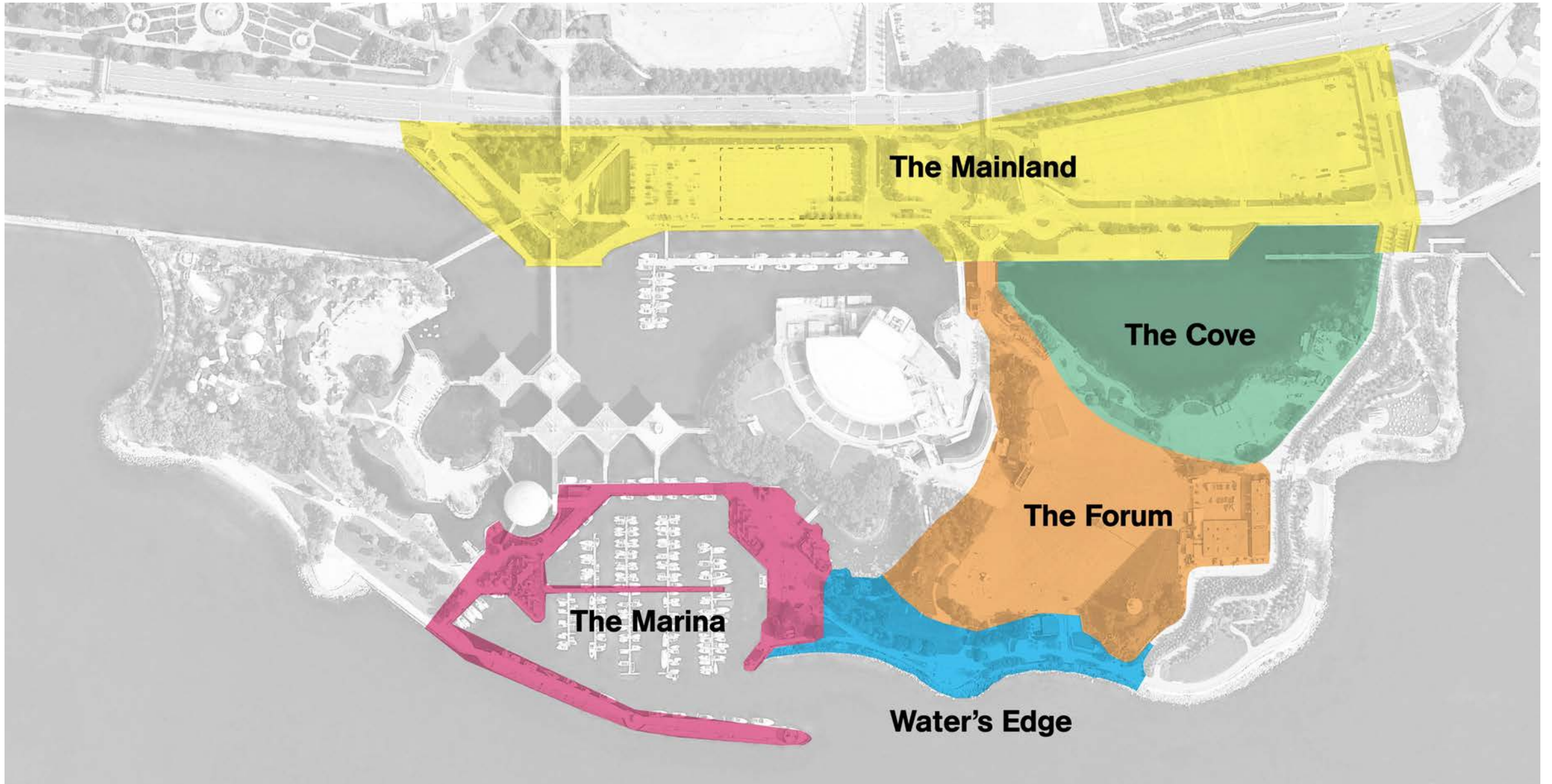


Barrier free stalls

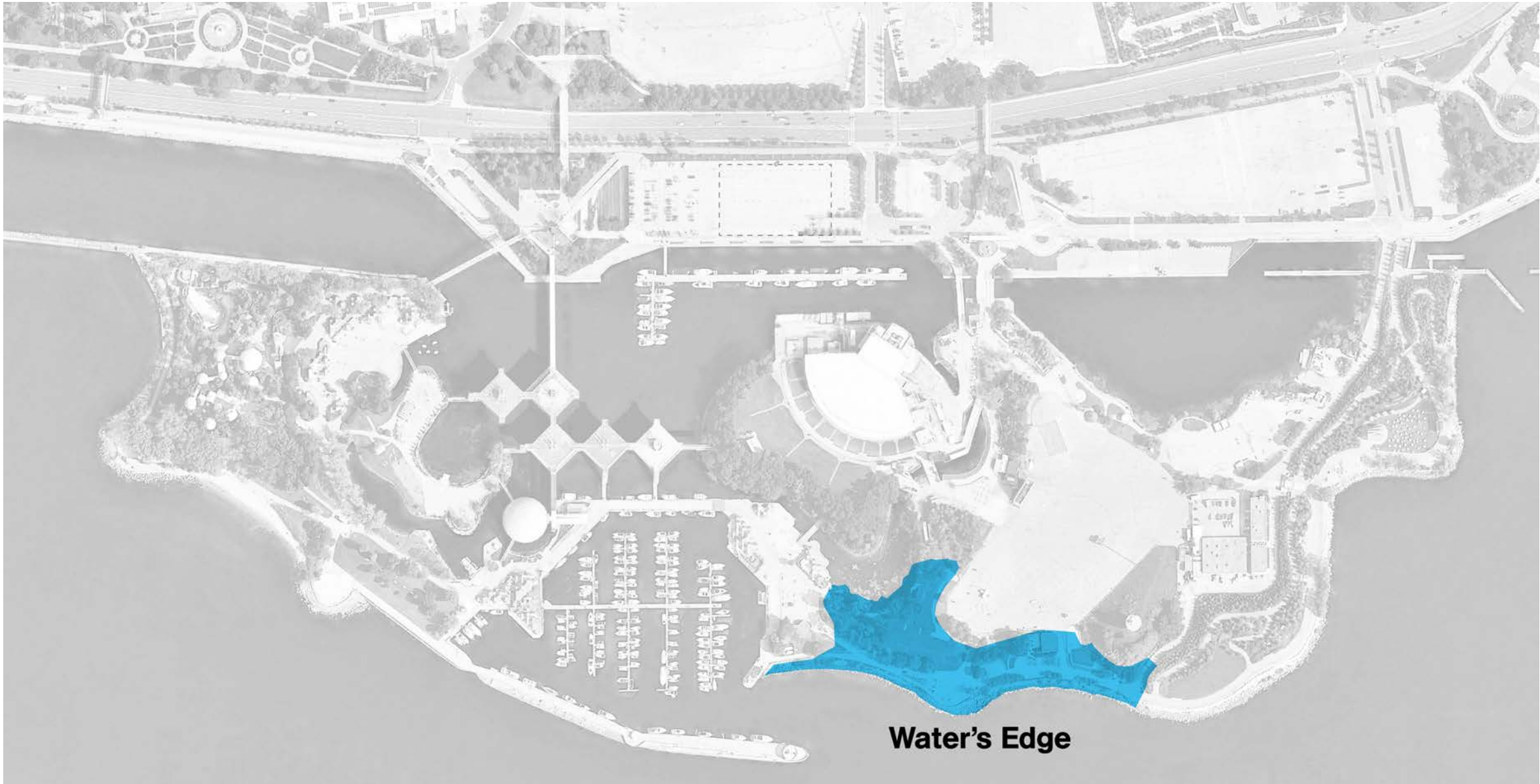




# OPPR Zone Breakdown



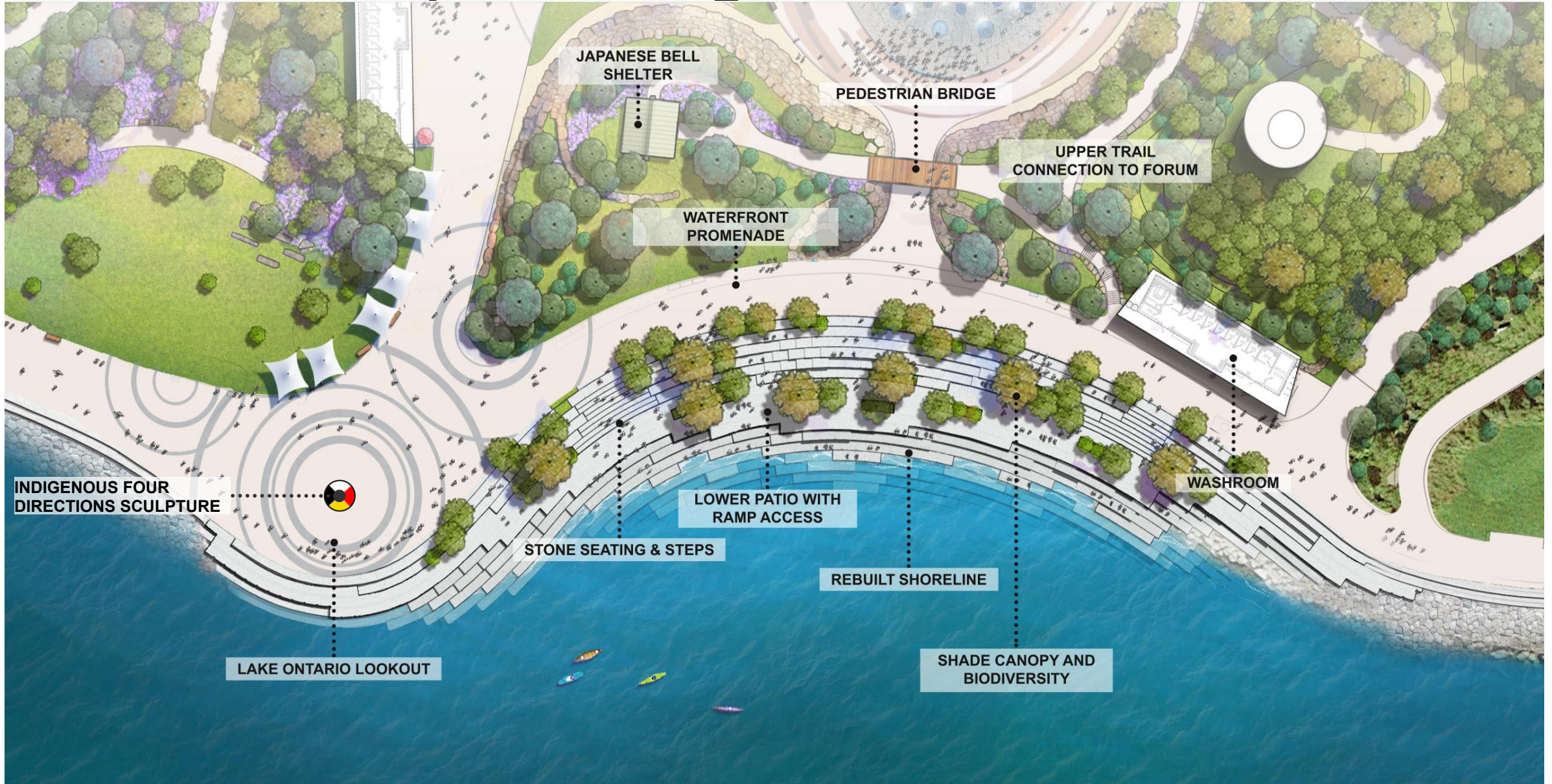
# Zone 1 | South Shore



# Existing Condition of the South Shore



# South Shore Proposed Design



# South Shore Upper Trail



# South Shore Restored Shoreline with Public Access

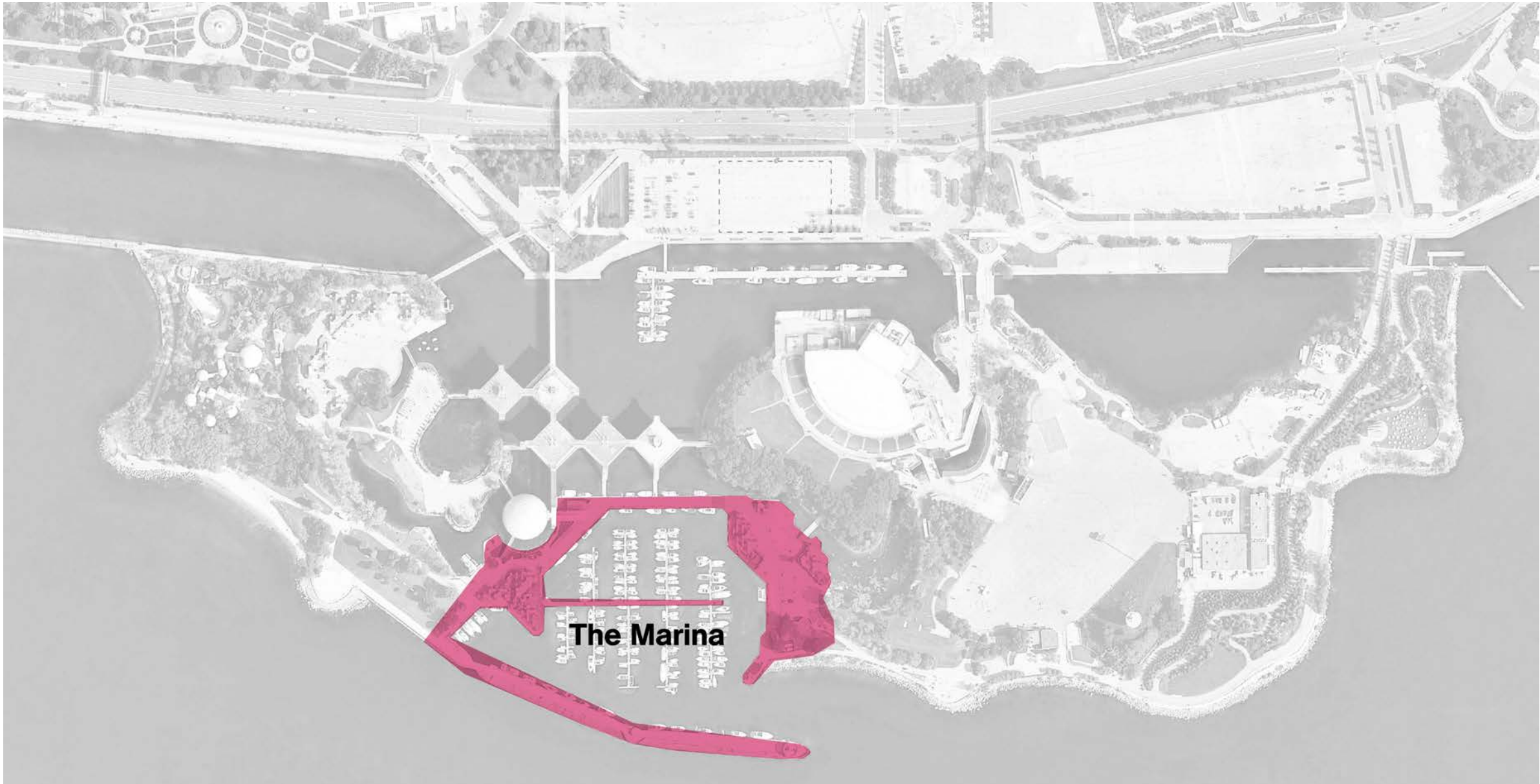


# Winter at the South Shore

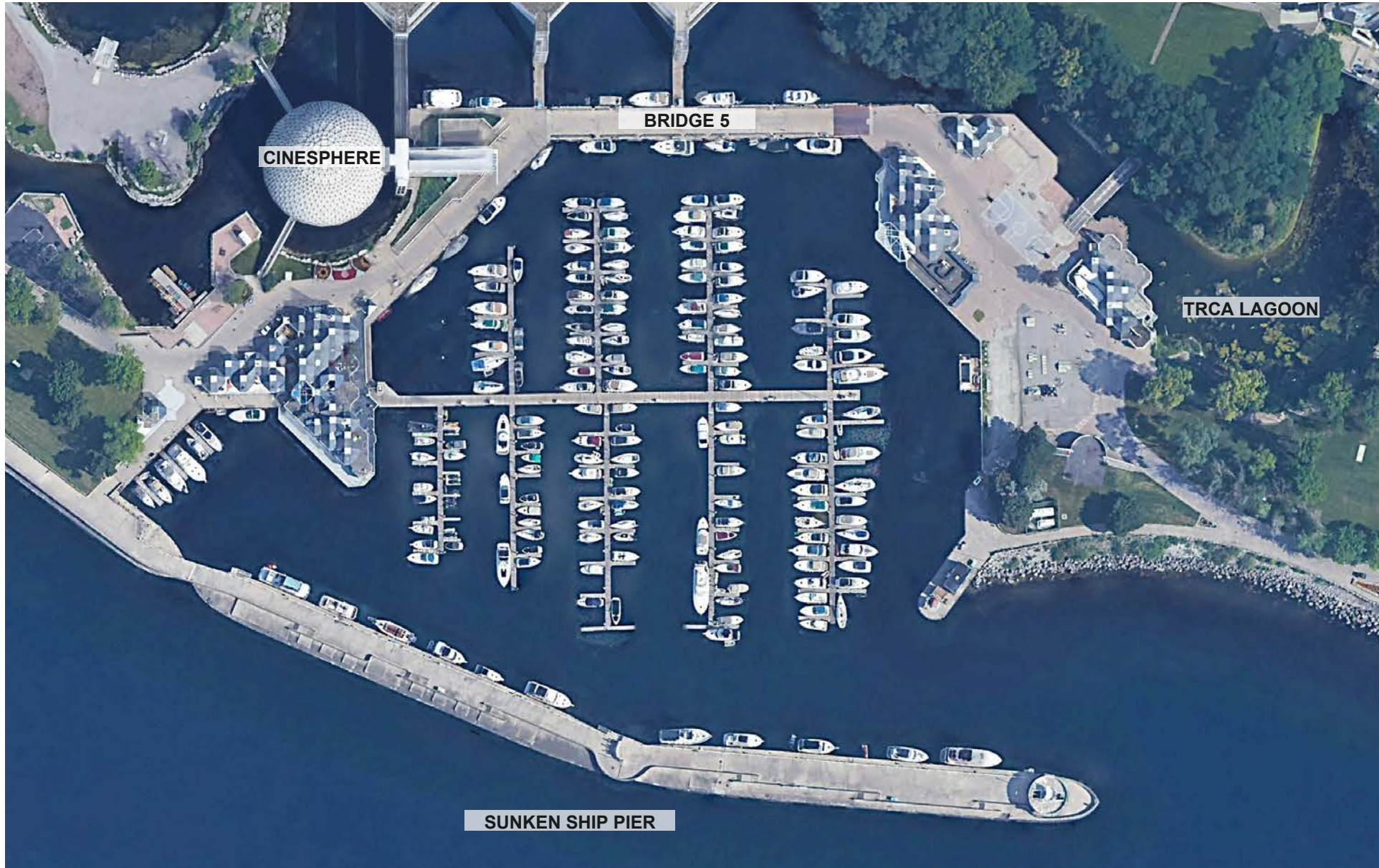




# Zone 2 | The Marina



# Existing Condition of the Marina



# Marina Proposed Design



# Marina Open Air Pavilions



# East Marina Commercial Development by Marina Tenant



# East Marina Commercial Development by Marina Tenant



# Zone 3 | Brigantine Cove



# Existing Condition of Brigantine Cove





# Brigantine Cove Proposed Design



# Brigantine Cove Boardwalks and Wetlands



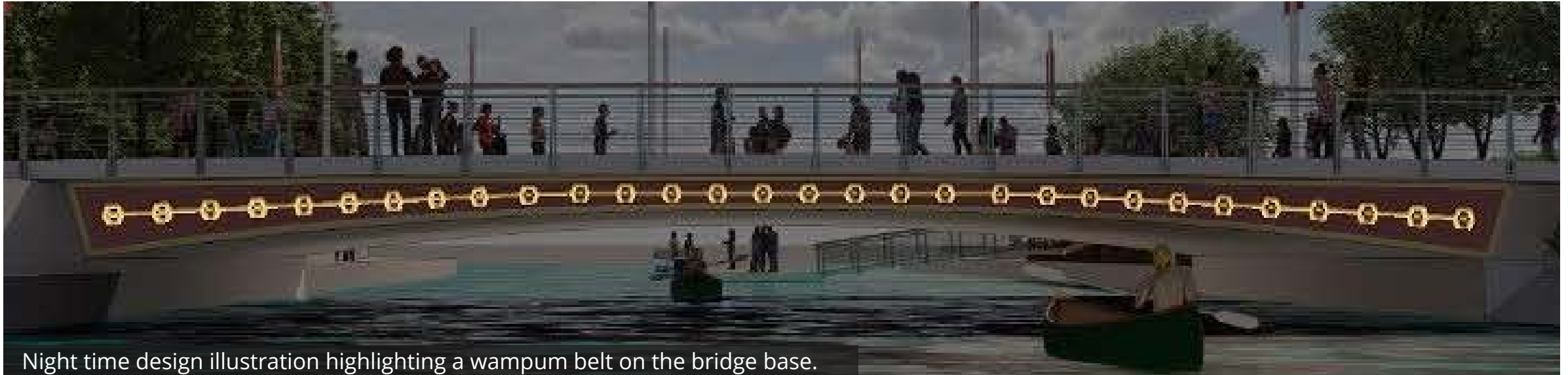
# Brigantine Cove Beach



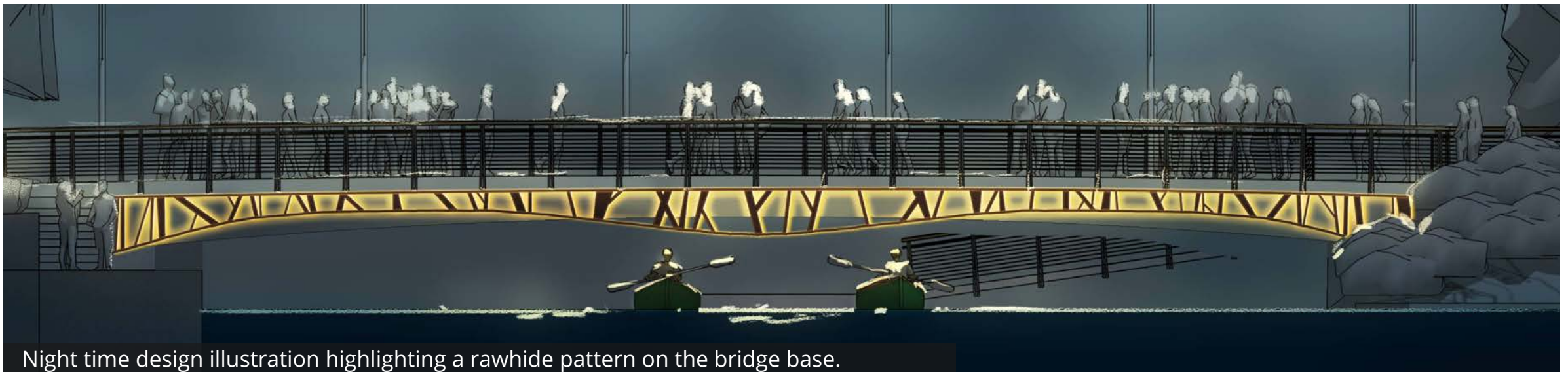
# East Bridge



# Indigenous Placekeeping - East Bridge



Night time design illustration highlighting a wampum belt on the bridge base.

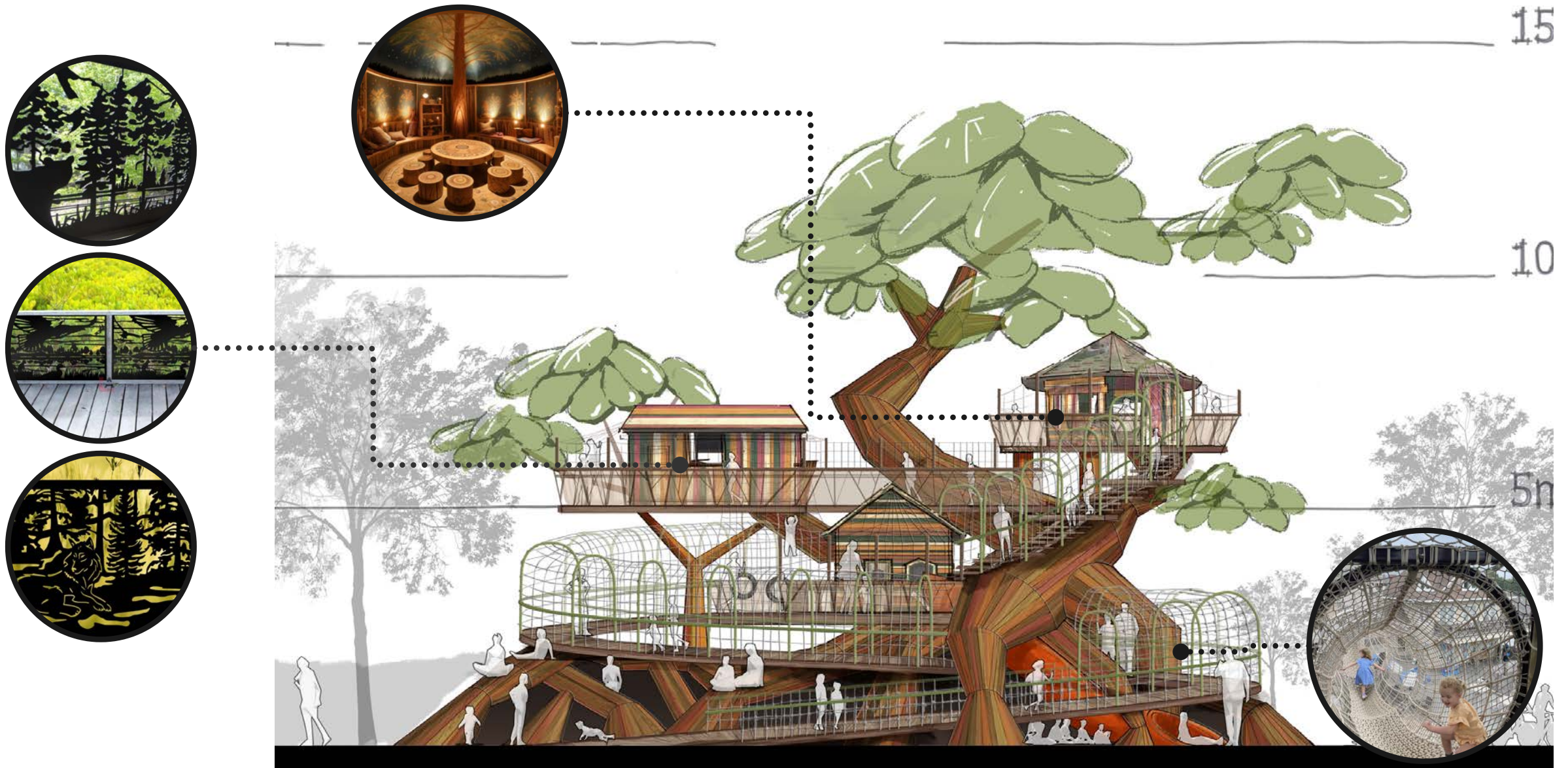


Night time design illustration highlighting a rawhide pattern on the bridge base.

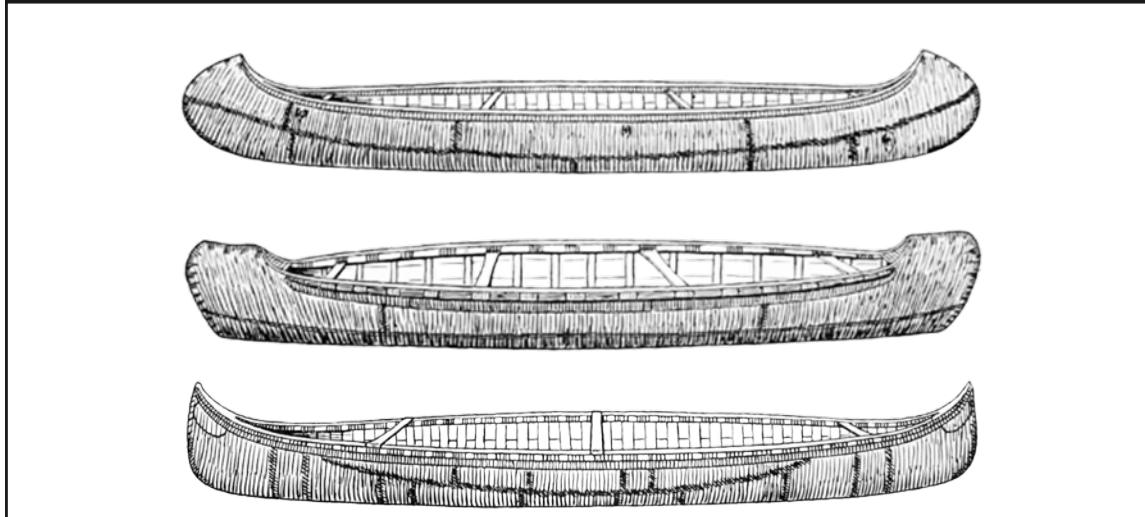
# Destination Play | Turtle Playground



# Destination Play | Treehouse



# Indigenous Placekeeping - Canoe Sculpture



Ojibwa, Chipewyan and Algonquin canoes



"Kajait", kayak, that the Inuit used for one person.



The Gathering, commissioned by Ports Toronto.



"Boat Sight" by John McEwen, Portageurs Park, Gatineau.



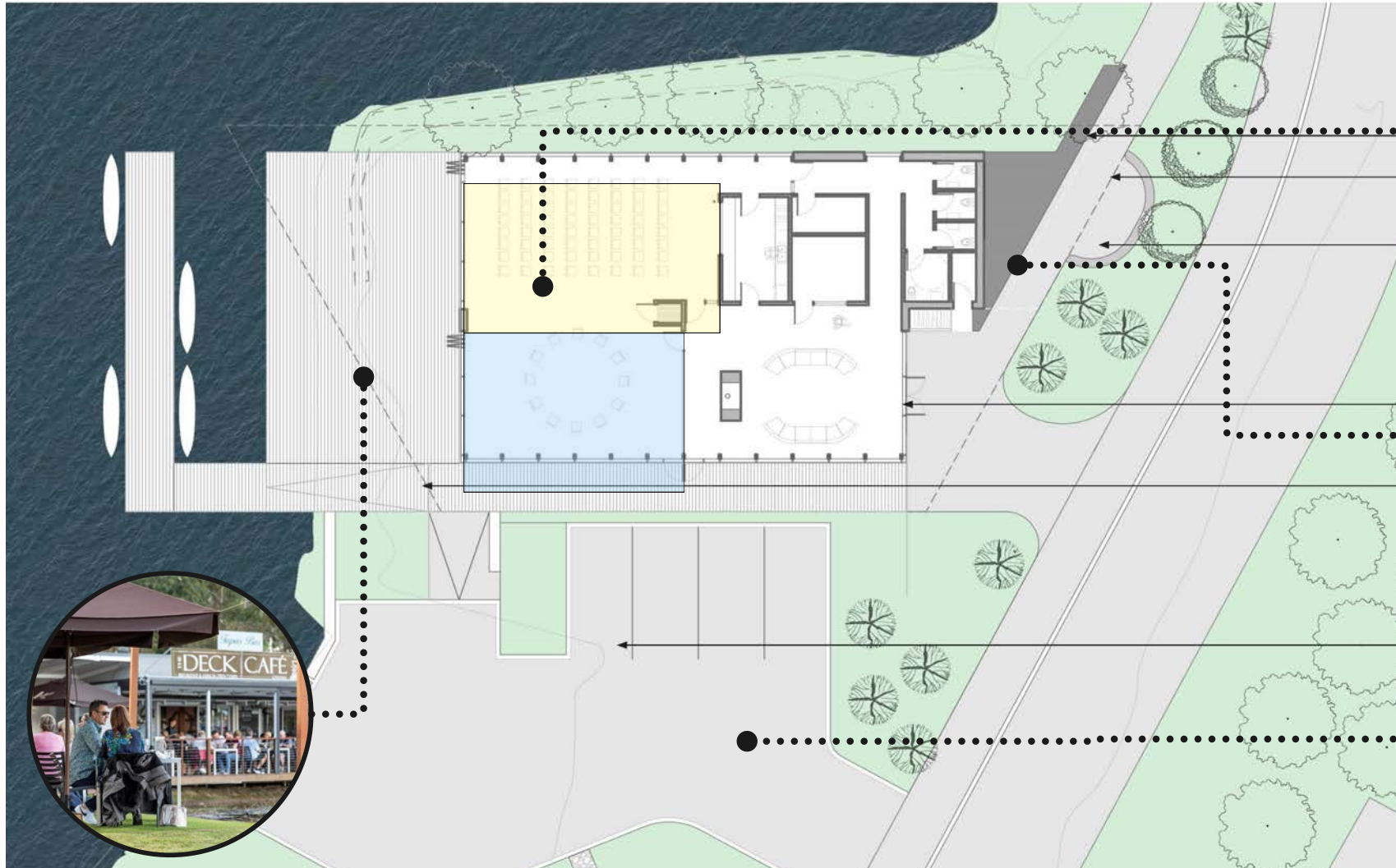
Stargazer



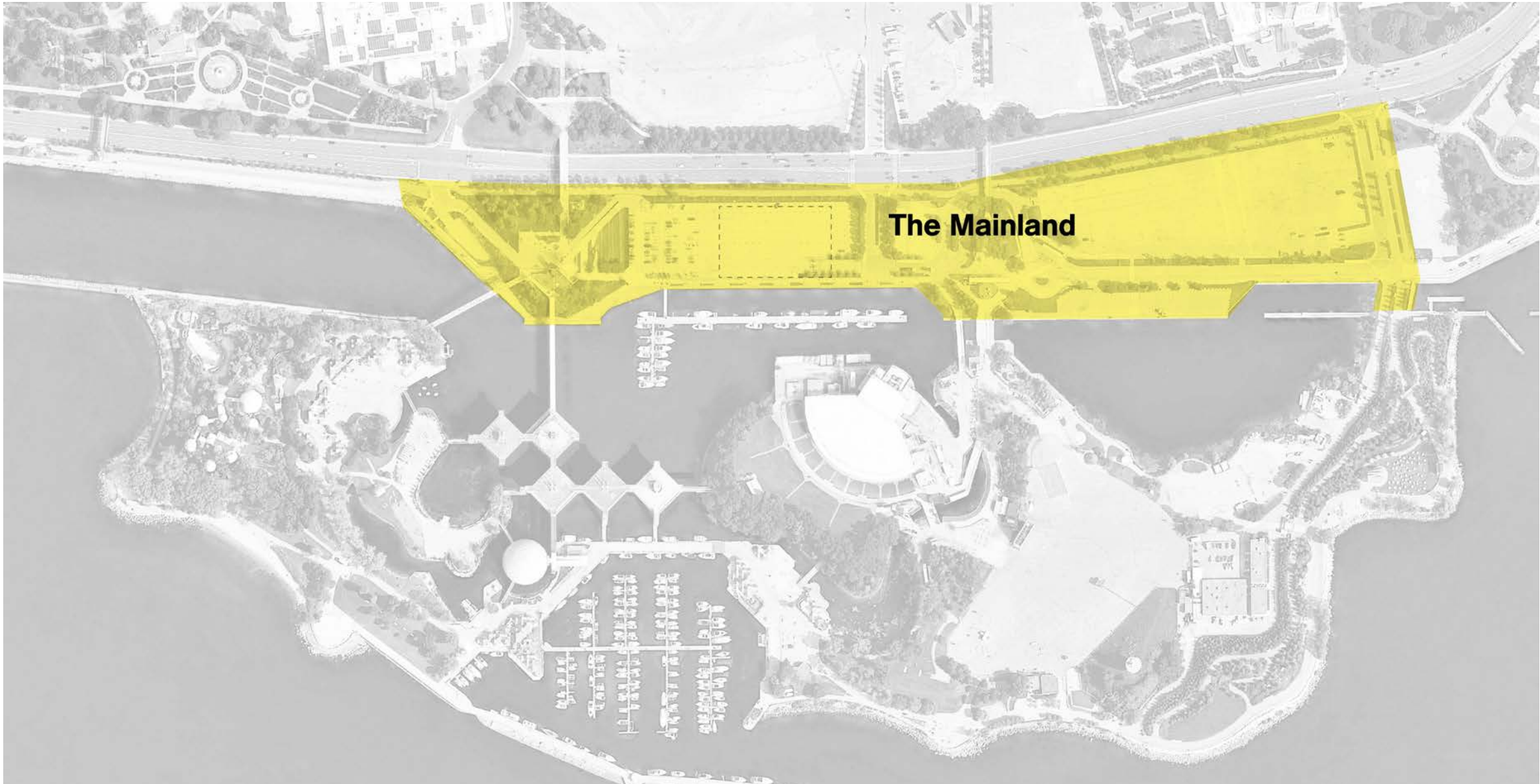
# Indigenous Placekeeping - Cultural Pavilion



# Indigenous Placekeeping - Cultural Pavilion



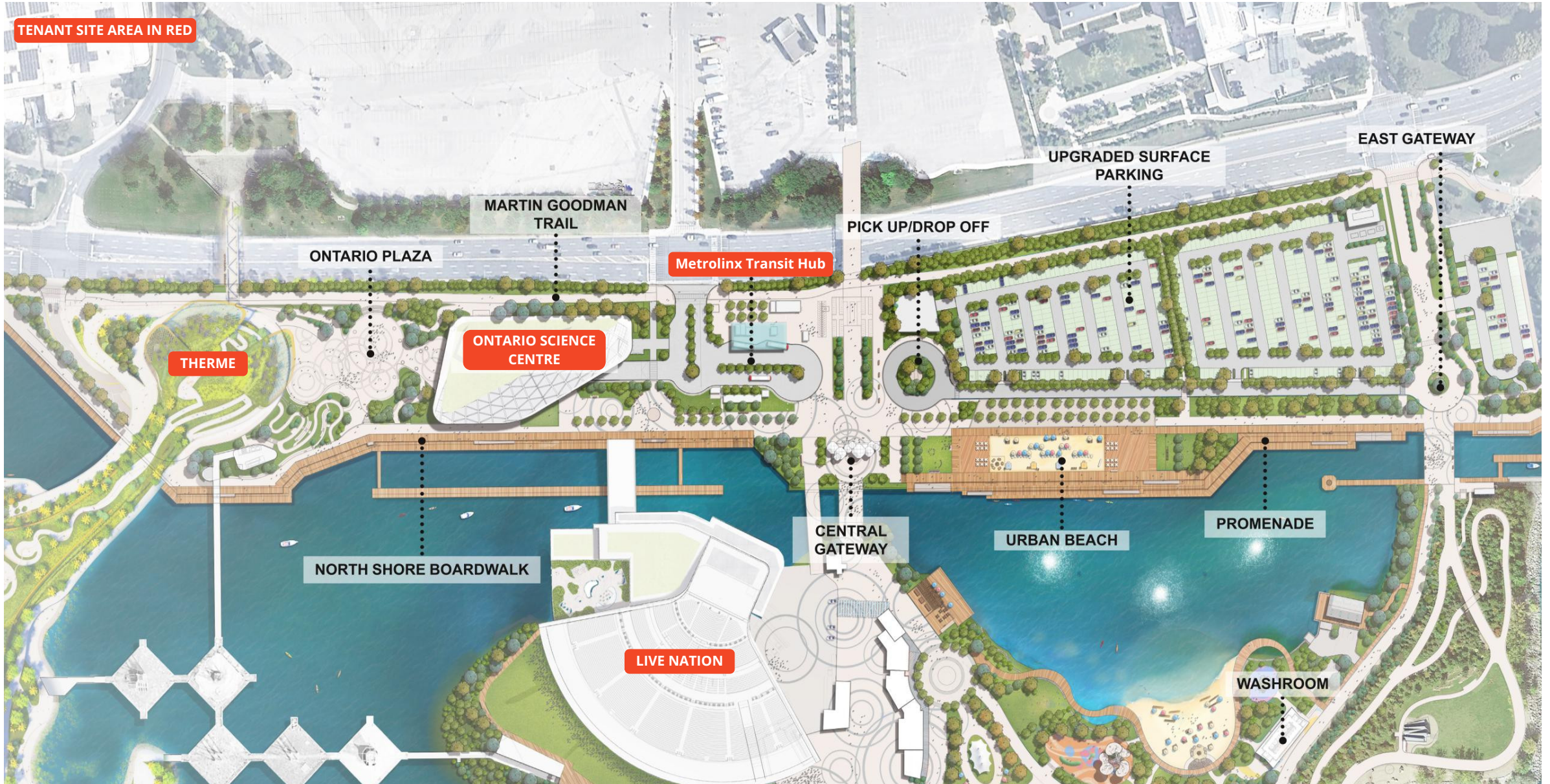
# Zone 4 | The Mainland



# Existing Condition of the Mainland



# The Mainland Proposed Design



# The Promenade



# The Promenade



# The Urban Beach

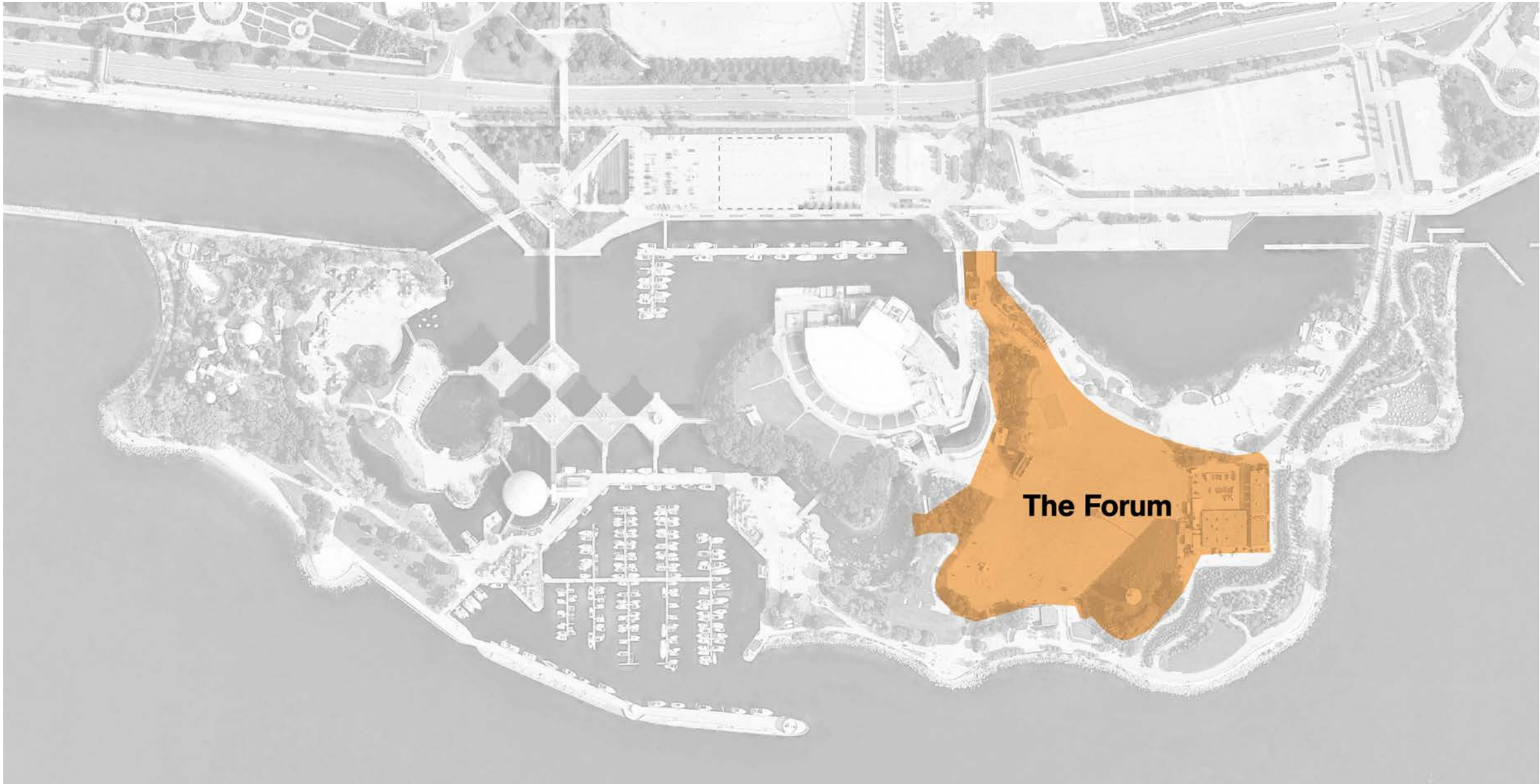




# Central Gateway Structure



# Zone 4 | The Forum



# Existing Condition of the Forum



# The Forum Proposed Design



# Interactive Play Fountain



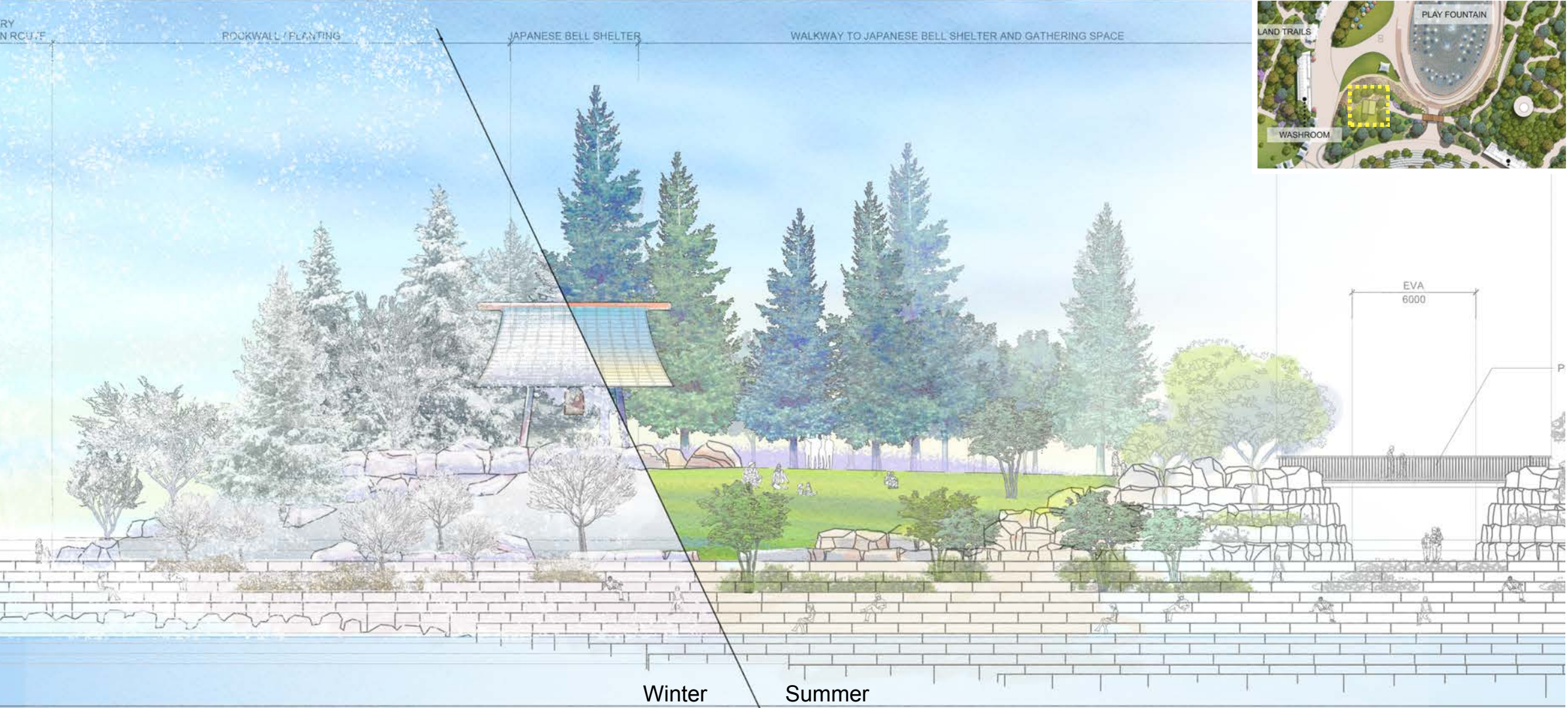
Winter Transformation



# Market Alley



# Japanese Canadian Centennial Temple Bell



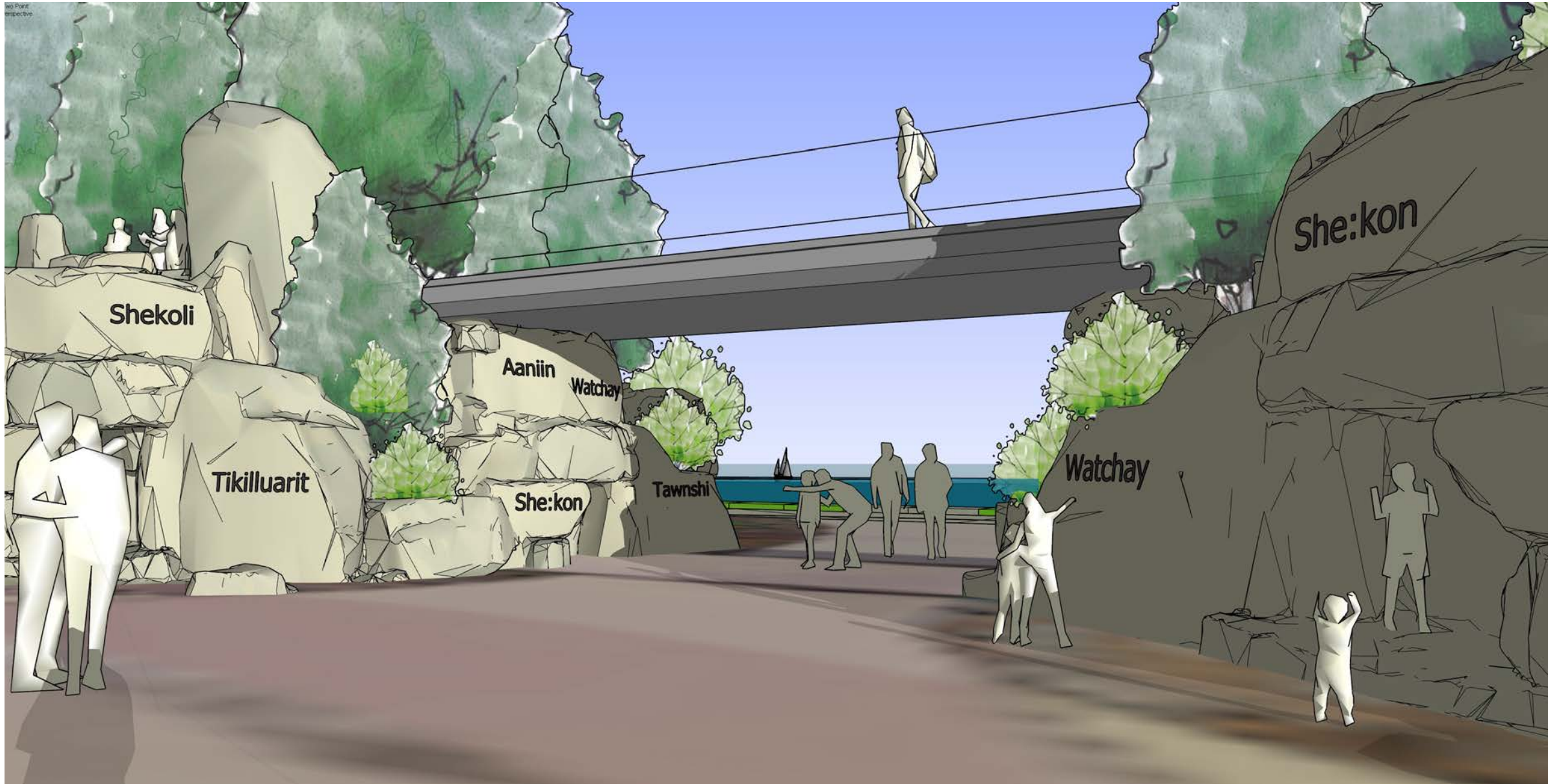
# Bluff Pedestrian Bridge



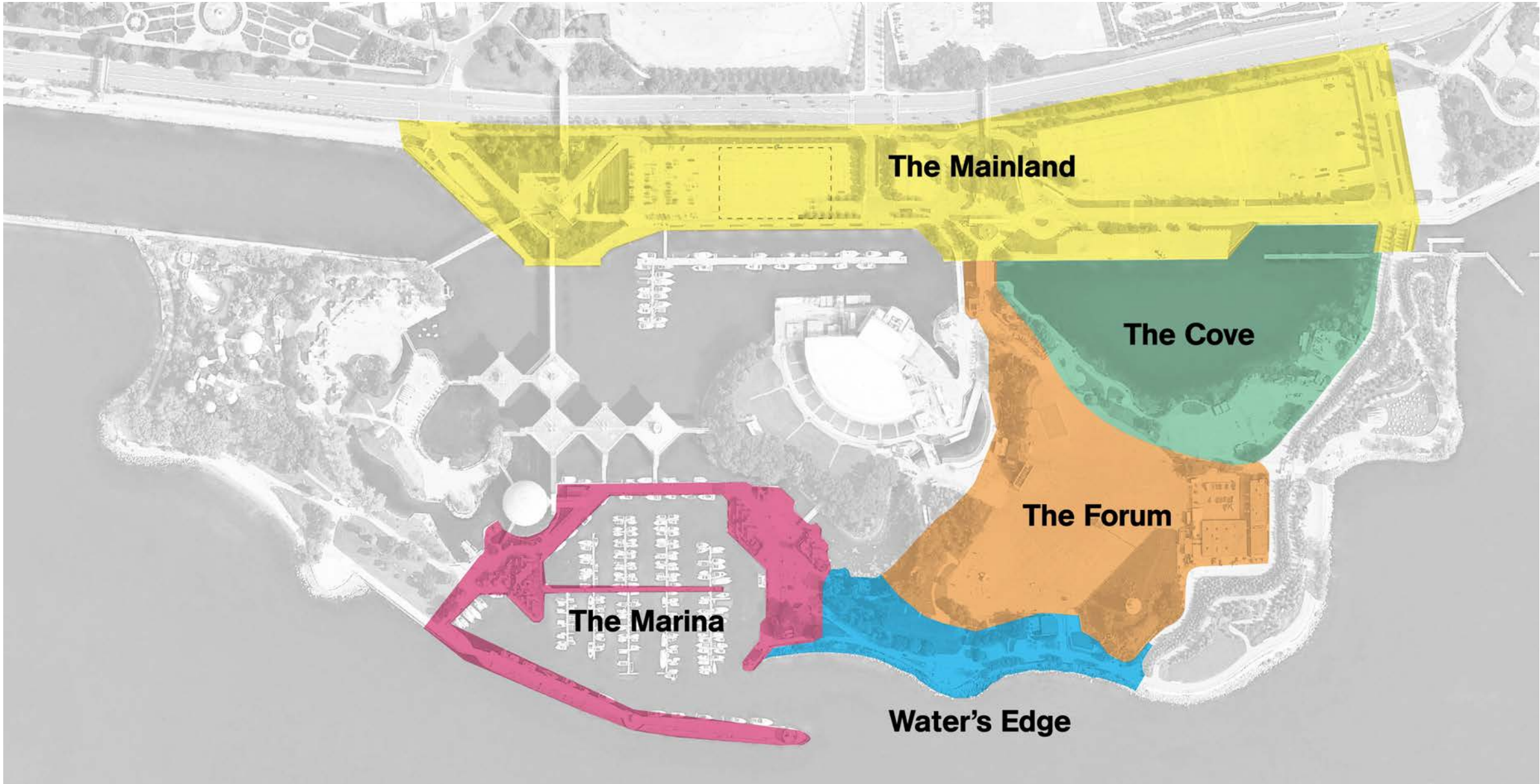
Trillium Park Pedestrian Bridge



# Language Wall



# Site Wide Design Moves



# Site Wide Features



**Photoluminescent Pavers**



**Indigenous Interpretive Signage**



**Four Directions Indigenous Sculptures**



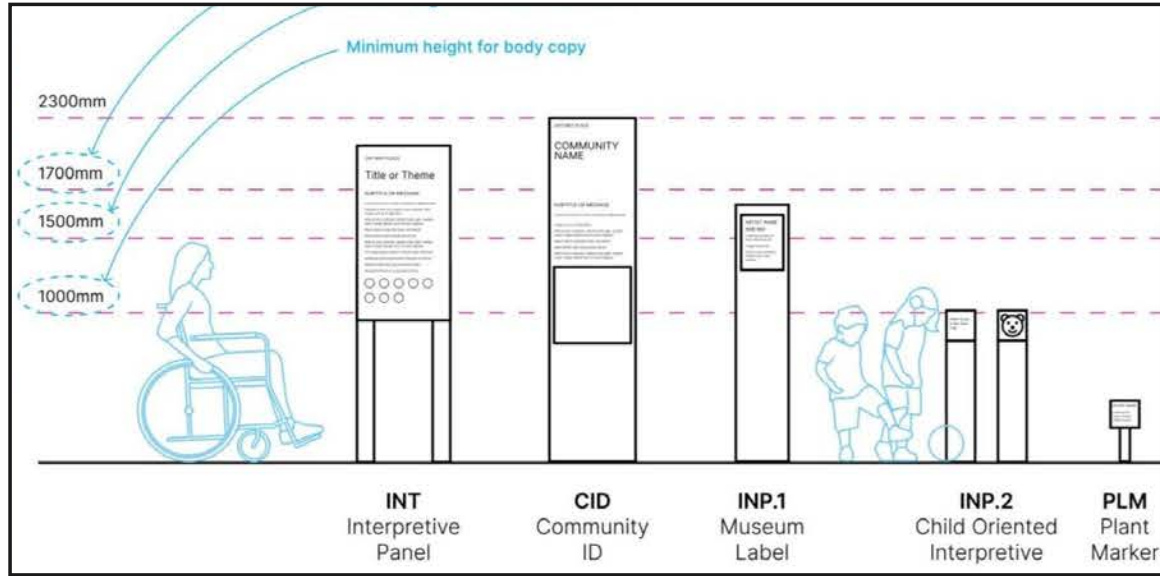
**OPPR Wayfinding Signage**



# Photoluminescent Pavers



# Interpretive Signage



# Four Direction Sculptures



Structure that represents Fire



Structure that represents Earth



Structure that represents Air



Structure that represents Water



Reclamation of Indigenous language and song in South Australia



"Fire, Air, Earth and Water" are garden pieces in San Francisco (by Amy



Glass Sculpture (by Dan Neil Barne).

# Recap on OPPR Scope



# Not Part of OPPR Phase of Work | Construction



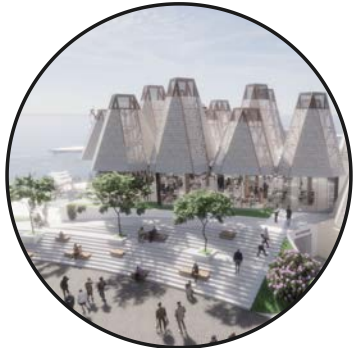
## Site Wide Food and Beverage

- Fulfilled by F&B tenants
- Marina, Cabana Market, and Forum event zone
- Temporary and permanent areas



## Shipping Container Market

- The Cabana Market is currently listed a future project
- Shipping containers are outside the OPPR scope
- The foundational requirement and landscape features are part of the OPPR scope.



## Marina commercial spaces

- Fulfilled by the marina tenant
- Marina office, tourism, laundry facilities, etc
- Open air pavilions under the OPPR scope will be altered in the future to meet commercial needs



## Ontario Place Pier / Sunken Ship Pier

- Currently under a future marina tenant



# Not Part of OPPR Phase of Work | Program



## Marina Sheet Pile Wall Upgrades

- Walls are 50 years old and in good condition
- No additional loading proposed on the walls
- The walls may need to be addressed in the future as the site develops further but not within the OPPR scope as per IO decision



## Admin and Maintenance building

- A future project to be addressed after 2030 when the OPPR is completed



## Final Waste Management Area

- Relocated from the Brigantine cove east side
- Temporarily proposed in P2A
- May be relocated to the future admin and maintenance building after completion (2030+)

# Not Part of OPPR Phase of Work | Third Party



## Bridges crossing over Lakeshore

- Completed by others



## Waterslide Tower Design

- Future project
- OSC has shown interest in the tower as a night sky lookout
- Design competition



## Combined Sewer Outflows

- City of Toronto infrastructure, work must be completed by the city.



## Metrolinx Transit Hub

- Design coordination between LANDinc/IO and MX completed 2023
- Detailed design and construction to be carried out by Metrolinx



## Off Site Tree Planting

- LANDinc completed recommendations for off site tree planting locations
- To be fulfilled by others/IO

# Questions & Comments?

